

LEA Name : West Branch Area SD  
Address : 516 Allport Cutoff  
Morrisdale , PA 16858

County : Clearfield  
AUN Number : 110179003  
LEA Type : SD

## Annual Financial Report Accuracy Certification Statement

For Fiscal Year Ending  
6/30/2017

Pennsylvania Department of Education  
&  
Office of Comptroller Operations

PDE-2056: Intermediate Unit

PDE-2057: School District, AVTS/CTC, Charter School,  
and Special Program Jointure

**CERTIFICATION: By signing this page I agree that the electronic data submitted is a complete and accurate statement of the financial operations and status of the local education agency for the fiscal year. It has been prepared in accordance with generally accepted accounting principles and established Commonwealth of PA reporting guidelines.**

  
\_\_\_\_\_  
Chief School Administrator Signature

11-2-2017  
\_\_\_\_\_  
Date

  
\_\_\_\_\_  
Board Secretary Signature

11-2-2017  
\_\_\_\_\_  
Date

Jason S McMillen

\_\_\_\_\_  
Contact Person

jmcmillen@westbranch.org

\_\_\_\_\_  
Contact Person E-mail Address

(814)345-5615 Ext :4850

\_\_\_\_\_  
Contact Person Telephone Number

(814)345-5220

\_\_\_\_\_  
Contact Person Fax Number

**Audit Certification**  
**Annual Financial Report:**  
For Fiscal Year Ending **6/30/2017**  
**(Pursuant to PA School Code Section 218(b))**

LEA Name : West Branch Area SD  
AUN Number : 110179003  
County : Clearfield

<b>Audit Certification Due:</b> 12/31/2017
---

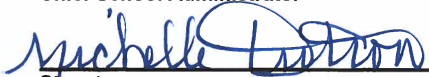
This certification is applicable to the Annual Financial Report data submitted through the Consolidated Financial Reporting System on: November 3, 2017  
Date

**Auditing Firm:** Baker Tilly Virchow Krause, LLP  
1423 N. Atherton Street  
State College, PA 16803

**Auditor Contact Name:** Rick Bair, Partner, CPA  
**Auditor Phone:** 814-206-7503  
**Auditor E-mail:** rick.bair@bakertilly.com

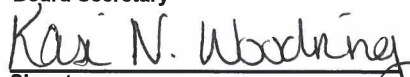
CERTIFICATION: By signing this page I agree that the financial statements of the school have been properly audited as noted above pursuant to Article XXIV, and in the auditor's professional opinion, the Annual Financial Report (PDE-2057) submitted on the date referenced is materially consistent with the audited financial statements.

Chief School Administrator

  
Signature

11-2-2017  
Date

Board Secretary

  
Signature

11-2-2017  
Date

Jason S McMillen

\_\_\_\_\_  
Contact Person

jmcmillen@westbranch.org

\_\_\_\_\_  
Contact Person E-mail Address

(814)345-5615

Ext :4850

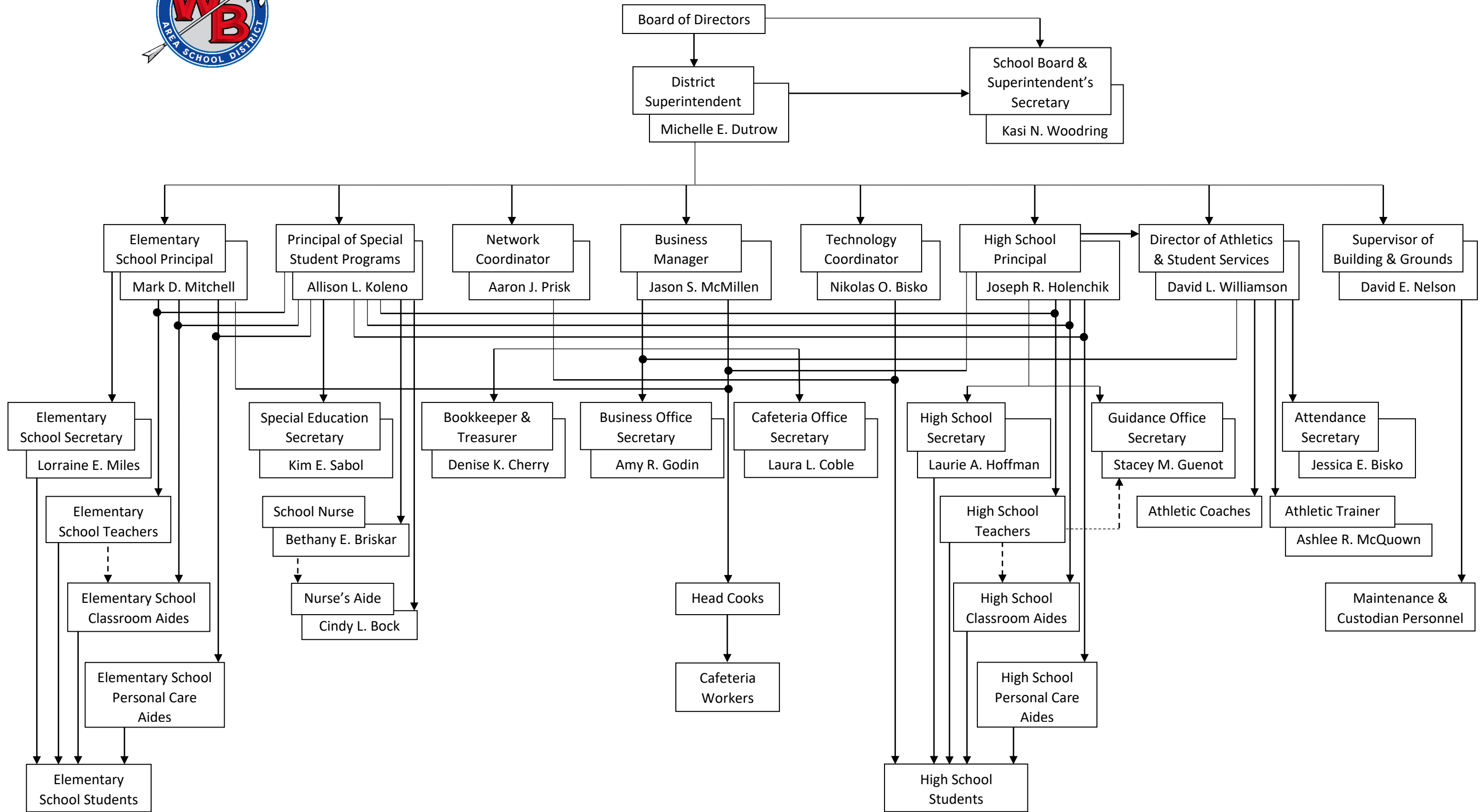
\_\_\_\_\_  
Contact Person Telephone Number

(814)345-5220

\_\_\_\_\_  
Contact Person Fax Number



# West Branch Area School District Organization Chart



Amounts Expressed in Whole Dollars	<u>General Fund</u> <u>(10)</u>	<u>Public Purpose Trust</u> <u>(27)</u>	<u>Other Compt Approved</u> <u>(28)</u>	<u>Athletic / Activity</u> <u>(29)</u>	<u>Capital Reserve (690.</u> <u>1850)</u> <u>(31)</u>
<b>Assets And Deferred Outflows Of Resources</b>					
<b>Assets</b>					
0100 Cash and Cash Equivalents	216,826				
0110 Investments	7,114,553				
0120 Taxes Receivable	791,941				
0130 Due From Other Funds	44,462				
0141 Due From Other Governments	325,919				
0142 State Revenue Receivable	471,912				
0143 Federal Revenue Receivable	286,409				
0145 Other Intergovernmental Revenue Receivable					
0146 Due from Primary Government					
0147 Due from Component Unit					
0150 Other Receivables	57,976				
0170 Inventories					
0180 Prepaid Expenses (Expenditures)					
0190 Other Current Assets					
<b>Total Assets</b>	<b>\$9,309,998</b>				
0910 Deferred Outflows of Resources					
<b>Total Assets And Deferred Outflows Of Resources</b>	<b>\$9,309,998</b>				

Amounts Expressed in Whole Dollars	<u>Capital Reserve (1431)</u> <u>(32)</u>	<u>Other Capital Projects</u> <u>Fund</u> <u>(39)</u>	<u>Debt Service</u> <u>(40)</u>	<u>Permanent</u> <u>(90)</u>	<u>Total Governmental</u> <u>Funds</u>
<b>Assets And Deferred Outflows Of Resources</b>					
<b>Assets</b>					
0100 Cash and Cash Equivalents					220,428
0110 Investments					7,226,854
0120 Taxes Receivable					791,941
0130 Due From Other Funds	35,564				80,026
0141 Due From Other Governments					325,919
0142 State Revenue Receivable					471,912
0143 Federal Revenue Receivable					286,409
0145 Other Intergovernmental Revenue Receivable					
0146 Due from Primary Government					
0147 Due from Component Unit					
0150 Other Receivables					57,976
0170 Inventories					
0180 Prepaid Expenses (Expenditures)					
0190 Other Current Assets					
<b>Total Assets</b>	<b>\$151,467</b>				<b>\$9,461,465</b>
0910 Deferred Outflows of Resources					
<b>Total Assets And Deferred Outflows Of Resources</b>	<b>\$151,467</b>				<b>\$9,461,465</b>

Amounts Expressed in Whole Dollars

<u>General Fund</u>	<u>Public Purpose Trust</u>	<u>Other Compt Approved</u>	<u>Athletic / Activity</u>	<u>Capital Reserve (690.</u>
<u>(10)</u>	<u>(27)</u>	<u>(28)</u>	<u>(29)</u>	<u>1850)</u>
				<u>(31)</u>

**Liabilities And Deferred Inflows Of Resources And Fund Balances**

**Liabilities**

0400 Due to Other Funds	35,564
0411 Due to Other Governments	
0412 Due to Primary Government	
0413 Due to Component Unit	
0420 Accounts Payable	302,347
0430 Contracts Payable	
0440 Current Portion of Long-Term Debt	
0450 Short-Term Payables	
0461 Accrued Salaries and Benefits	1,264,527
0462 Payroll Deductions and Withholding	266,520
0480 Unearned Revenues	580,024
0490 Other Current Liabilities	

**Total Liabilities** **\$2,448,982**

0950 Deferred Inflows of Resources

**Fund Balances**

0810 Nonspendable Fund Balance	
0820 Restricted Fund Balance	
0830 Committed Fund Balance	2,881,721
0840 Assigned Fund Balance	321,785
0850 Unassigned Fund Balance	3,657,510

**Total Fund Balances** **\$6,861,016**

**Total Liabilities, Deferred Inflows Of Resources And Fund Balances** **\$9,309,998**

Amounts Expressed in Whole Dollars

	<u>Capital Reserve (1431)</u> <u>(32)</u>	<u>Other Capital Projects</u> <u>Fund</u> <u>(39)</u>	<u>Debt Service</u> <u>(40)</u>	<u>Permanent</u> <u>(90)</u>	<u>Total Governmental</u> <u>Funds</u>
<b>Liabilities And Deferred Inflows Of Resources And Fund Balances</b>					
<b>Liabilities</b>					
0400 Due to Other Funds					35,564
0411 Due to Other Governments					
0412 Due to Primary Government					
0413 Due to Component Unit					
0420 Accounts Payable					302,347
0430 Contracts Payable					
0440 Current Portion of Long-Term Debt					
0450 Short-Term Payables					
0461 Accrued Salaries and Benefits					1,264,527
0462 Payroll Deductions and Withholding					266,520
0480 Unearned Revenues					580,024
0490 Other Current Liabilities					
<b>Total Liabilities</b>					<b>\$2,448,982</b>
0950 Deferred Inflows of Resources					
<b>Fund Balances</b>					
0810 Nonspendable Fund Balance					
0820 Restricted Fund Balance	151,467				151,467
0830 Committed Fund Balance					2,881,721
0840 Assigned Fund Balance					321,785
0850 Unassigned Fund Balance					3,657,510
<b>Total Fund Balances</b>	<b>\$151,467</b>				<b>\$7,012,483</b>
<b>Total Liabilities, Deferred Inflows Of Resources And Fund Balances</b>	<b>\$151,467</b>				<b>\$9,461,465</b>

Amounts Expressed in Whole Dollars	<u>General Fund</u> <u>(10)</u>	<u>Public Purpose Trust</u> <u>(27)</u>	<u>Other Compt Approved</u> <u>(28)</u>	<u>Athletic / Activity</u> <u>(29)</u>	<u>Capital Reserve (690.</u> <u>1850)</u> <u>(31)</u>
<b>Revenues</b>					
6000 Revenue from Local Sources	5,279,032				
7000 Revenue from State Sources	11,384,038				
8000 Revenue from Federal Sources	624,200				
<b>Total Revenues</b>	<b>\$17,287,270</b>				
<b>Expenditures</b>					
1000 Instruction	10,064,928				
2000 Support Services	4,983,370				
3000 Operation of Non-Instructional Services	371,467				
4000 Facilities Acquisition, Construction and Improvement Services	369,076				
5110 Debt Service	1,037,047				
5130 Refund of Prior Year Revenues / Receipts					
<b>Total Expenditures</b>	<b>\$16,825,888</b>				
<b>Excess (Deficiency) Of Revenues Over Expenditures</b>	<b>\$461,382</b>				
<b>Other Financing Sources (Uses)</b>					
9110 Face Value of Bonds Issued					
9120 Proceeds from Refunding of Bonds					
9130 Bond Premiums					
9200 Proceeds from Extended-Term Financing					
9300 Interfund Transfers - IN					
9400 Sale of or Compensation for Loss of Fixed Assets					
9710 Transfers from Component Units					
9720 Transfers from Primary Governments					
9910 Other Financing Sources Not Listed in the 9000 Series					
9990 Insurance Recoveries					
5120 Debt Service – Refunded Bonds					
5150 Bond Discounts					
5200 Interfund Transfers – Out	266,617				
5300 Transfers Out to Component Units/Primary Governments					
<b>Total Other Financing Sources (Uses)</b>	<b>(\$266,617)</b>				



Amounts Expressed in Whole Dollars	<u>Capital Reserve (1431)</u> <u>(32)</u>	<u>Other Capital Projects</u> <u>Fund</u> <u>(39)</u>	<u>Debt Service</u> <u>(40)</u>	<u>Permanent</u> <u>(90)</u>	<u>Total Governmental</u> <u>Funds</u>
<b>Revenues</b>					
6000 Revenue from Local Sources	61				5,279,093
7000 Revenue from State Sources					11,384,038
8000 Revenue from Federal Sources					624,200
<b>Total Revenues</b>	<b>\$61</b>				<b>\$17,287,331</b>
<b>Expenditures</b>					
1000 Instruction					10,064,928
2000 Support Services					4,983,370
3000 Operation of Non-Instructional Services					371,467
4000 Facilities Acquisition, Construction and Improvement Services					369,076
5110 Debt Service	191,474				1,228,521
5130 Refund of Prior Year Revenues / Receipts					
<b>Total Expenditures</b>	<b>\$191,474</b>				<b>\$17,017,362</b>
<b>Excess (Deficiency) Of Revenues Over Expenditures</b>	<b>(\$191,413)</b>				<b>\$269,969</b>
<b>Other Financing Sources (Uses)</b>					
9110 Face Value of Bonds Issued					
9120 Proceeds from Refunding of Bonds					
9130 Bond Premiums					
9200 Proceeds from Extended-Term Financing					
9300 Interfund Transfers - IN	266,617				266,617
9400 Sale of or Compensation for Loss of Fixed Assets					
9710 Transfers from Component Units					
9720 Transfers from Primary Governments					
9910 Other Financing Sources Not Listed in the 9000 Series					
9990 Insurance Recoveries					
5120 Debt Service – Refunded Bonds					
5150 Bond Discounts					
5200 Interfund Transfers – Out					266,617
5300 Transfers Out to Component Units/Primary Governments					
<b>Total Other Financing Sources (Uses)</b>	<b>\$266,617</b>				<b>\$0</b>

Amounts Expressed in Whole Dollars	<u>General Fund</u> <u>(10)</u>	<u>Public Purpose Trust</u> <u>(27)</u>	<u>Other Compt Approved</u> <u>(28)</u>	<u>Athletic / Activity</u> <u>(29)</u>	<u>Capital Reserve</u> <u>(690.</u> <u>1850)</u> <u>(31)</u>
<b>Special And Extraordinary Items</b>					
9920 Special Items – Gains					
9930 Extraordinary Items – Gains					
5520 Special Items – Losses					
5530 Extraordinary Items – Losses					
<b>Net Change In Fund Balances</b>	<b>\$194,765</b>				
<b>Fund Balance</b>					
0001 Fund Balance - Beginning of Fiscal Year	6,666,252				
<b>Fund Balance - End Of Year</b>	<b>\$6,861,017</b>				

Amounts Expressed in Whole Dollars	<u>Capital Reserve (1431)</u> <u>(32)</u>	<u>Other Capital Projects</u> <u>Fund</u> <u>(39)</u>	<u>Debt Service</u> <u>(40)</u>	<u>Permanent</u> <u>(90)</u>	<u>Total Governmental</u> <u>Funds</u>
<b>Special And Extraordinary Items</b>					
9920 Special Items – Gains					
9930 Extraordinary Items – Gains					
5520 Special Items – Losses					
5530 Extraordinary Items – Losses					
<b>Net Change In Fund Balances</b>	<b>\$75,204</b>				<b>\$269,969</b>
<b>Fund Balance</b>					
0001 Fund Balance - Beginning of Fiscal Year	76,263				6,742,515
<b>Fund Balance - End Of Year</b>	<b>\$151,467</b>				<b>\$7,012,484</b>

Amounts Expressed in Whole Dollars	<u>Food Service</u> <u>(51)</u>	<u>Child Care</u> <u>Operations</u> <u>(52)</u>	<u>Other Enterprise</u> <u>(58)</u>	<u>TOTAL</u>	<u>Internal Service</u> <u>(60)</u>
<b>Assets And Deferred Outflows Of Resources</b>					
<b>Current Assets</b>					
0100 Cash and Cash Equivalents	122,423			122,423	
0110 Investments					
0130 Due From Other Funds					
0141 Due From Other Governments	10,678			10,678	
0142 State Revenue Receivable					
0143 Federal Revenue Receivable					
0146 Due from Primary Government					
0147 Due from Component Unit					
0150 Other Receivables	41,756			41,756	
0170 Inventories	8,213			8,213	
0180 Prepaid Expenses (Expenditures)					
0190 Other Current Assets					
<b>Total Current Assets</b>	<b>\$183,070</b>			<b>\$183,070</b>	
<b>Noncurrent Assets</b>					
0211 Land					
0212 Site Improvements (Net)					
0220 Buildings and Building Improvements (Net)					
0230 Machinery, Equipment and Furniture (Net)	147,939			147,939	
0250 Construction in Progress					
0260 Long Term Prepayments					
0290 Other Noncurrent Assets					
<b>Total Noncurrent Assets</b>	<b>\$147,939</b>			<b>\$147,939</b>	
0910 Deferred Outflows of Resources					
<b>Total Assets And Deferred Outflows Of Resources</b>	<b>\$331,009</b>			<b>\$331,009</b>	

Amounts Expressed in Whole Dollars	<u>Food Service</u> (51)	<u>Child Care</u> <u>Operations</u> (52)	<u>Other Enterprise</u> (58)	<u>TOTAL</u>	<u>Internal Service</u> (60)
<b>Liabilities And Deferred Inflows Of Resources And Net Position</b>					
<b>Current Liabilities</b>					
0400 Due to Other Funds	44,462			44,462	
0411 Due to Other Governments					
0413 Due to Component Unit					
0420 Accounts Payable					
0430 Contracts Payable					
0440 Current Portion of Long-Term Debt					
0450 Short-Term Payables					
0461 Accrued Salaries and Benefits					
0462 Payroll Deductions and Withholding					
0480 Unearned Revenues	15,073			15,073	
0490 Other Current Liabilities					
<b>Total Current Liabilities</b>	<b>\$59,535</b>			<b>\$59,535</b>	
<b>Noncurrent Liabilities</b>					
0510 Bonds Payable					
0520 Extended-Term Financing Agreements Payable					
0530 Lease-Purchase Obligations					
0540 Accumulated Compensated Absences	6,435			6,435	
0550 Authority Lease Obligations					
0560 Other Post-Employment Benefits (OPEB)					
0570 Net Pension Liability					
0599 Other Noncurrent Liabilities					
<b>Total Noncurrent Liabilities</b>	<b>\$6,435</b>			<b>\$6,435</b>	
<b>Total Liabilities</b>	<b>\$65,970</b>			<b>\$65,970</b>	
0950 Deferred Inflows of Resources					
<b>Net Position</b>					
0791 Net Investment in Capital Assets	147,939			147,939	
0008 Restricted Net Position (0792 – 0798)					
0799 Unrestricted Net Position	117,100			117,100	
<b>Total Net Position</b>	<b>\$265,039</b>			<b>\$265,039</b>	
<b>Total Liabilities And Deferred Inflows Of Resources And Net Position</b>	<b>\$331,009</b>			<b>\$331,009</b>	

Amounts Expressed in Whole Dollars	<u>Food Service</u> <u>(51)</u>	<u>Child Care Operations</u> <u>(52)</u>	<u>Other Enterprise</u> <u>(58)</u>	<u>TOTAL</u>	<u>Internal Service</u> <u>(60)</u>
<b>Operating Revenues</b>					
6600 Food Service Revenue	227,905			227,905	
0071 Charges for Services					
0072 Other Operating Revenue					
<b>Total Operating Revenues</b>	<b>\$227,905</b>			<b>\$227,905</b>	
<b>Operating Expenses</b>					
100 Personnel Services – Salaries	90,983			90,983	
200 Personnel Services – Employee Benefits	69,278			69,278	
300 Purchased Professional and Technical Services	913			913	
400 Purchased Property Services	19,472			19,472	
500 Other Purchased Services	340,027			340,027	
600 Supplies	76,192			76,192	
740 Depreciation	12,757			12,757	
810 Dues and Fees	1,055			1,055	
890 Miscellaneous Expenditures	39			39	
<b>Total Operating Expenses</b>	<b>\$610,716</b>			<b>\$610,716</b>	
<b>Operating Income (Loss)</b>	<b>(\$382,811)</b>			<b>(\$382,811)</b>	
<b>Non Operating Revenues (Expenses)</b>					
6500 Earnings on Investments	94			94	
6920 Contributions and Donations from Private Sources					
6930 Gains or Losses on Sale of Fixed Assets					
6991 Refunds of a Prior Year Expenditure					
7000 Revenue from State Sources	23,222			23,222	
8000 Revenue from Federal Sources	369,968			369,968	
820 Claims and Judgments Against the LEA					
830 Interest					
<b>TOTAL Non Operating Revenues (Expenses)</b>	<b>\$393,284</b>			<b>\$393,284</b>	
<b>Income (Loss) Before Contributions And Transfers</b>	<b>\$10,473</b>			<b>\$10,473</b>	

Amounts Expressed in Whole Dollars	<u>Food Service</u> <u>(51)</u>	<u>Child Care Operations</u> <u>(52)</u>	<u>Other Enterprise</u> <u>(58)</u>	<u>TOTAL</u>	<u>Internal Service</u> <u>(60)</u>
<b>Contributions, Transfers, and Special and Extraordinary Items</b>					
5200 Interfund Transfers – Out					
5300 Transfers Out to Component Units/Primary Governments					
5520 Special Items – Losses					
5530 Extraordinary Items – Losses					
9300 Interfund Transfers - IN					
9500 Capital Contributions					
9700 Transfers IN From Component Units/Primary Governments					
9920 Special Items – Gains					
9930 Extraordinary Items – Gains					
<b>Change In Net Position</b>	<b>\$10,473</b>			<b>\$10,473</b>	
0002 Net Position - Beginning of Fiscal Year	254,566			254,566	
0003 Accounting Changes / Residual Equity Transfers					
<b>Net Position - End Of Year</b>	<b>\$265,039</b>			<b>\$265,039</b>	

Amounts Expressed in Whole Dollars	<u>Food Service</u> <u>(51)</u>	<u>Child Care Operations</u> <u>(52)</u>	<u>Other Enterprise</u> <u>(58)</u>	<u>TOTAL</u>	<u>Internal Service(60)</u>
<b>Cash Flows From Operating Activities</b>					
0011 Cash Receipts From Users	227,564			227,564	
0012 Cash Receipts From Assessments Made to Other Funds					
0013 Cash Receipts From Earnings on Investments					
0014 Cash Receipts From Other Operating Revenue					
0015 Cash Payments To Employees For Services	160,260			160,260	
0016 Cash Payments For Insurance Claims					
0017 Cash Payments To Suppliers For Goods and Services	478,068			478,068	
0018 Cash Payments For Other Operating Expenses					
<b>Net Cash Provided By (Used For) Operating Activities</b>	<b>(\$410,764)</b>			<b>(\$410,764)</b>	
<b>Cash Flows From Non-Capital Financing Activities</b>					
0021 Receipts From Local Sources - 6000					
0022 Receipts From State Sources - 7000	25,297			25,297	
0023 Receipts From Federal Sources -8000	396,721			396,721	
0024 Notes and Loans Received (Repaid)					
0025 Interest Paid on Notes/Loans - 5100-830					
0026 Operating Transfers In (Out)/Residual Equity Trans					
0027 Operating Transfers In (Out) Primary Government / Comp Unit					
0028 Receipts From Refund of Prior Year Expenditures - 6991					
0029 Special and Extraordinary Gains (losses)					
<b>Net Cash Prov By (Used for) Non-Capital Financing Activities</b>	<b>\$422,018</b>			<b>\$422,018</b>	
<b>Cash Flows From Capital and Related Financing Activities</b>					
0031 Payments For Fac Acq, Const, and Imp - 4000					
0032 Gain / (Loss) on Sale of Fixed Assets - 6930					
0033 Proceeds From Extended Term Financing - 9200					
0034 Principal Paid on Financing Agreements					
0035 Interest Paid on Financing Agreements - 5100-830					
0036 (Inc) Dec in Contributed Capital					
<b>Net Cash Prov By (Used for) Capital and Related Financing Activities</b>					
<b>Cash Flows From Investing Activities</b>					
0041 Earnings on Investments - 6500	94			94	
0042 Purchase of Inv Securities / Deposits to Inv Pools					
0043 Receipts From Investment Pool Withdrawals					
0044 Proceeds from Sale and Maturity of Inv Securities					
0045 Loans Received (Paid)					
<b>Net Cash Prov By (Used for) Investing Activities</b>	<b>\$94</b>			<b>\$94</b>	



	<u>Food Service</u> <u>(51)</u>	<u>Child Care Operations</u> <u>(52)</u>	<u>Other Enterprise</u> <u>(58)</u>	<u>TOTAL</u>	<u>Internal Service</u> <u>(60)</u>
<b>Net Increase (Decrease) in Cash Flows</b>	11,348			11,348	
0004 Cash and Cash Equivalents Beginning of Year	111,075			111,075	
<b>Cash and Cash Equivalents at Year End</b>	<b>\$122,423</b>			<b>\$122,423</b>	
<hr/>					
<b>Reconciliation of Operating Income (Loss) To Net Cash Provided by (Used For) Operating Activities</b>					
0005 Operating Income (Loss) per REP	(382,811)			(382,811)	
<b>Adjustments</b>					
0051 Depreciation and Net Amortization	12,757			12,757	
0052 Provision for Uncollectible Accounts					
0053 Other Adjustments					
<b>Effect of Changes in Assets, Liabilities, Deferred Outflows and Deferred Inflows</b>					
0054 (Inc) Dec In Accounts Receivable (0120-0150)	(41,756)			(41,756)	
0055 Advances to Other Funds (0160)					
0056 (Inc) Dec in Inventories (0170)	2,510			2,510	
0057 (Inc) Dec in Prepaid Expenses (0180)	7,771			7,771	
0058 (Inc) Dec in Other Current or Noncurrent Assets					
0064 Deferred Outflows (0910)					
0059 Inc (Dec) in Accounts Payable (0400-0450)	(10,109)			(10,109)	
0060 Inc (Dec) in Accrued Salaries/Benefits (0461)					
0065 Inc (Dec) in Net Pension Liabilities (0570)					
0066 Inc (Dec) in Other Postemp Benefit Oblig (0560)	1,215			1,215	
0061 Inc (Dec) in Payroll Deductions/Withholding (0462)					
0062 Inc (Dec) in Unearned Revenue (0480)	(341)			(341)	
0063 Inc (Dec) in Other Current or Noncurrent Liabilities					
0067 Deferred Inflows (0950)					
<b>Total Adjustments</b>	<b>(\$27,953)</b>			<b>(\$27,953)</b>	
<b>Cash Provided By (Used for) Total</b>	<b>(\$410,764)</b>			<b>(\$410,764)</b>	

COMBINED STATEMENT OF CASH FLOWS  
SCHEDULE OF NONCASH INVESTING, CAPITAL, AND FINANCING ACTIVITIES

Explanation of Transaction and Balance Sheet Effect	Amount
<b>Total</b>	

LEA : 110179003 West Branch Area SD

Printed 11/2/2017 11:15:05 AM

Amounts Expressed in Whole Dollars

Private Purpose Trust  
(71)

Investment Trust  
(72)

Pension Trust  
(73)

Activity  
(81)

**Assets And Deferred Outflows Of Resources**

**Assets**

0100 Cash and Cash Equivalents				35,130
0110 Investments				
0130 Due From Other Funds				
0147 Due from Component Unit				
0150 Other Receivables				
0170 Inventories				
0180 Prepaid Expenses (Expenditures)				
0190 Other Current Assets				
0220 Buildings and Building Improvements (Net)				
0230 Machinery, Equipment and Furniture (Net)				

**Total Assets** **\$35,130**

0910 Deferred Outflows of Resources

**Total Assets And Deferred Outflows Of Resources** **\$35,130**

LEA : 110179003 West Branch Area SD

Printed 11/2/2017 11:15:05 AM

Amounts Expressed in Whole Dollars	<u>Other Agency</u> <u>(89)</u>	<u>Discrete Component Units</u> <u>(98)</u>	<u>Discrete Component Units</u> <u>(99)</u>	<u>Total Fiduciary Funds</u>
<b>Assets And Deferred Outflows Of Resources</b>				
<b>Assets</b>				
0100 Cash and Cash Equivalents				35,130
0110 Investments				
0130 Due From Other Funds				
0147 Due from Component Unit				
0150 Other Receivables				
0170 Inventories				
0180 Prepaid Expenses (Expenditures)				
0190 Other Current Assets				
0220 Buildings and Building Improvements (Net)				
0230 Machinery, Equipment and Furniture (Net)				
<b>Total Assets</b>				<b>\$35,130</b>
0910 Deferred Outflows of Resources				
<b>Total Assets And Deferred Outflows Of Resources</b>				<b>\$35,130</b>

LEA : 110179003 West Branch Area SD

Printed 11/2/2017 11:15:05 AM

Amounts Expressed in Whole Dollars	<u>Private Purpose Trust</u> (71)	<u>Investment Trust</u> (72)	<u>Pension Trust</u> (73)	<u>Activity</u> (81)
<b>Liabilities, Deferred Inflows Of Resources And Net Position</b>				
<b>Liabilities</b>				
0400 Due to Other Funds				
0411 Due to Other Governments				
0412 Due to Primary Government				
0413 Due to Component Unit				
0420 Accounts Payable				
0430 Contracts Payable				
0450 Short-Term Payables				
0461 Accrued Salaries and Benefits				
0462 Payroll Deductions and Withholding				
0480 Unearned Revenues				
0490 Other Current Liabilities				35,130
<b>Total Liabilities</b>				<b>\$35,130</b>
0950 Deferred Inflows of Resources				
<b>Net Position</b>				
0791 Net Investment in Capital Assets				
0009 Restricted Net Position (0792 – 0798)				
0799 Unrestricted Net Position				
<b>Total Net Position</b>				
<b>Total Liabilities, Deferred Inflows Of Resources And Net Position</b>				<b>\$35,130</b>

LEA : 110179003 West Branch Area SD

Printed 11/2/2017 11:15:05 AM

Amounts Expressed in Whole Dollars	<u>Other Agency</u> (89)	<u>Discrete Component Units</u> (98)	<u>Discrete Component Units</u> (99)	<u>Total Fiduciary Funds</u>
<b>Liabilities, Deferred Inflows Of Resources And Net Position</b>				
<b>Liabilities</b>				
0400 Due to Other Funds				
0411 Due to Other Governments				
0412 Due to Primary Government				
0413 Due to Component Unit				
0420 Accounts Payable				
0430 Contracts Payable				
0450 Short-Term Payables				
0461 Accrued Salaries and Benefits				
0462 Payroll Deductions and Withholding				
0480 Unearned Revenues				
0490 Other Current Liabilities				35,130
<b>Total Liabilities</b>				<b>\$35,130</b>
<b>Net Position</b>				
0950 Deferred Inflows of Resources				
0791 Net Investment in Capital Assets				
0009 Restricted Net Position (0792 – 0798)				
0799 Unrestricted Net Position				
<b>Total Net Position</b>				
<b>Total Liabilities, Deferred Inflows Of Resources And Net Position</b>				<b>\$35,130</b>

	<u>Revenue Reported In Current Year</u>	<u>Current Year Tax Accrual</u>	<u>Prior Year Tax Accrual</u>	<u>Taxes Collected In Current Year</u>
<b><u>Revenue from Local Sources</u></b>				
6111 Current Real Estate Taxes	3,558,020.34			3,558,020.34
6113 Public Utility Realty Taxes	5,003.92			5,003.92
6114 Payments in Lieu of Current Taxes - State / Local	32,494.43			32,494.43
6120 Current Per Capita Taxes, Section 679	16,044.35			16,044.35
6141 Current Act 511 Per Capita Taxes	16,044.35			16,044.35
6142 Current Act 511 Occupation Taxes - Flat Rate	14,036.73			14,036.73
6143 Current Act 511 Local Services Taxes	7,020.25			7,020.25
6151 Current Act 511 Earned Income Taxes	597,345.16			597,345.16
6153 Current Act 511 Real Estate Transfer Taxes	43,658.96			43,658.96
6411 Delinquent Real Estate Taxes	435,467.59			435,467.59
6412 Delinquent Interim Real Estate Taxes	1,347.75			1,347.75
6440 Delinquent Local Enabling Taxes - Flat Rate Assessments	373.14			373.14
6451 Delinquent Act 511 Earned Income Taxes	18,051.10			18,051.10
6500 Earnings on Investments	27,066.06			
6700 Revenues from LEA Activities	39,352.05			
6821 State Revenue Received from Other Pennsylvania Public LEAs	9,772.25			
6829 State Revenue Received from Other Sources	112,535.17			
6832 Federal IDEA Revenue Received as Pass Through	241,366.63			
6910 Rentals	4,305.00			
6920 Contributions and Donations from Private Sources	4,355.98			
6942 Summer School Tuition	1,490.00			
6991 Refunds of a Prior Year Expenditure	63,726.24			
6992 Energy Efficiency Revenues and Incentives	6,759.52			
6999 Other Revenues Not Specified Above	23,395.48			
<b>TOTAL Revenue from Local Sources</b>	<b>\$5,279,032.45</b>			<b>\$4,744,908.07</b>

**Revenue Reported  
In Current Year**

**Revenue from State Sources**

7110 Basic Education Funding	7,312,628.33			
7160 Tuition for Orphans Subsidy	16,517.09			
7271 Special Education funds for School-Aged Pupils	783,339.27			
7311 Pupil Transportation Subsidy	700,030.75			
7312 Nonpublic and Charter School Pupil Transportation Subsidy	4,620.00			
7320 Rental and Sinking Fund Payments / Building Reimbursement Subsidy	227,696.89			
7330 Health Services (Medical, Dental, Nurse, Act 25)	22,108.46			
7340 State Property Tax Reduction Allocation	283,678.21			
7360 Safe Schools	24,518.29			
7505 Ready to Learn Block Grant	263,735.00			
7810 State Share of Social Security and Medicare Taxes	348,874.85			
7820 State Share of Retirement Contributions	1,396,290.52			
<b>TOTAL Revenue from State Sources</b>	<b>\$11,384,037.66</b>			



**Revenue Reported  
In Current Year**

**Revenue from Federal Sources**

8514 NCLB, Title I - Improving the Academic Achievement of the Disadvantaged	487,706.42		
8515 NCLB, Title II - Preparing, Training and Recruiting High Quality Teachers and Principals	55,416.00		
8519 NCLB, Title VI - Flexibility and Accountability	23,001.00		
8810 School-Based Access Medicaid Reimbursement Program (SBAP) Reimbursements (Access)	58,076.13		
<b>TOTAL Revenue from Federal Sources</b>	<b>\$624,199.55</b>		
<b>TOTAL FROM ALL SOURCES</b>	<b>\$17,287,269.66</b>		<b>\$4,744,908.07</b>

Revenue from Local Sources	5,279,032.45
Revenue from State Sources	11,384,037.66
Revenue from Federal Sources	624,199.55
Other Financing Sources	
<b>TOTAL FROM ALL SOURCES</b>	<b>\$17,287,269.66</b>

**General Fund (10)**

	<u>Total</u>
<b>1000 Instruction</b>	
<b>100 Personnel Services – Salaries</b>	
100 Personnel Services – Salaries	4,866,562.69
<b>Total Personnel Services – Salaries</b>	<b>\$4,866,562.69</b>
<b>200 Personnel Services – Employee Benefits</b>	
210 Group Insurance – Contracted Provider	8,451.81
220 Social Security Contributions	358,327.80
230 PSERS Retirement Contributions	1,485,456.56
250 Unemployment Compensation	715.92
260 Workers’ Compensation	19,797.65
270 Group Insurance – Self-Insurance	1,165,406.68
280 Other Post-Employment Benefits (OPEB)	75,020.05
292 Health Savings Accounts	222.55
<b>Total Personnel Services – Employee Benefits</b>	<b>\$3,113,399.02</b>
<b>300 Purchased Professional and Technical Services</b>	
322 Professional Educational Services – Ius	474,783.17
324 Professional Educational Services – Employee Training and Development Services	225.00
329 Professional Educational Services – Other	112,215.16
340 Technical Services	3,593.97
350 Security / Safety Services	3,587.00
<b>Total Purchased Professional and Technical Services</b>	<b>\$594,404.30</b>
<b>400 Purchased Property Services</b>	
430 Repairs and Maintenance Services	17,078.75
<b>Total Purchased Property Services</b>	<b>\$17,078.75</b>
<b>500 Other Purchased Services</b>	
510 Student Transportation Services	909.05
530 Communications	36,747.97
561 Tuition To Other School Districts Within the State	28,957.12
562 Tuition To Pennsylvania Charter Schools	333,737.87
564 Tuition To Career and Technology Centers	569,561.61
568 Tuition To Private Residential Rehabilitative Institutions (PRRI) [In-State] and Detention Centers	23,695.00
570 Food Service Management	2,947.00
580 Travel	2,112.56
597 Direct Payments To Intermediate Units for Institutionalized Childrens' Program	3,481.22
<b>Total Other Purchased Services</b>	<b>\$1,002,149.40</b>
<b>600 Supplies</b>	
610 General Supplies	86,672.94
620 Energy	483.47
630 Food	477.00
640 Books and Periodicals	132,603.76
650 Supplies & Fees – Technology Related	92,672.38
<b>Total Supplies</b>	<b>\$312,909.55</b>
<b>700 Property</b>	
752 Capital Equipment – Original and Additional	29,059.84

**General Fund (10)**

<b>1000 Instruction</b>	<b><u>Total</u></b>
<b>700 <u>Property</u></b>	
758 Capitalized Technology Software - Original	48,227.54
766 Capitalized Technology Hardware and Equipment – Replacement	430.98
768 Capitalized Technology Software - Replacement	31,424.69
<b>Total Property</b>	<b>\$109,143.05</b>
<b>800 <u>Other Objects</u></b>	
810 Dues and Fees	49,280.98
<b>Total Other Objects</b>	<b>\$49,280.98</b>
<b>Total 1000 Instruction</b>	<b>\$10,064,927.74</b>

**General Fund (10)**

**1100 Regular Programs – Elementary / Secondary**

	<u>Elementary</u>	<u>Secondary</u>	<u>Federal</u>	<u>Total</u>
<b>100 Personnel Services – Salaries</b>				
100 Personnel Services – Salaries	1,822,937.07	1,607,059.33	117,646.55	3,547,642.95
<b>Total Personnel Services – Salaries</b>	<b>\$1,822,937.07</b>	<b>\$1,607,059.33</b>	<b>\$117,646.55</b>	<b>\$3,547,642.95</b>
<b>200 Personnel Services – Employee Benefits</b>				
210 Group Insurance – Contracted Provider	3,326.42	2,916.20	184.43	6,427.05
220 Social Security Contributions	135,851.99	119,365.65	8,890.32	264,107.96
230 PSERS Retirement Contributions	638,325.10	446,776.53	34,091.59	1,119,193.22
250 Unemployment Compensation	597.00	118.92		715.92
260 Workers' Compensation	7,746.06	7,456.40	53.38	15,255.84
270 Group Insurance – Self-Insurance	410,584.47	432,166.40	40,845.66	883,596.53
280 Other Post-Employment Benefits (OPEB)	36,922.14	38,097.91		75,020.05
<b>Total Personnel Services – Employee Benefits</b>	<b>\$1,233,353.18</b>	<b>\$1,046,898.01</b>	<b>\$84,065.38</b>	<b>\$2,364,316.57</b>
<b>300 Purchased Professional and Technical Services</b>				
322 Professional Educational Services – Ius			212.96	212.96
329 Professional Educational Services – Other	(1,367.95)	51,703.99	2,713.11	53,049.15
340 Technical Services	1,796.98	1,796.99		3,593.97
350 Security / Safety Services	1,793.50	1,793.50		3,587.00
<b>Total Purchased Professional and Technical Services</b>	<b>\$2,222.53</b>	<b>\$55,294.48</b>	<b>\$2,926.07</b>	<b>\$60,443.08</b>
<b>400 Purchased Property Services</b>				
430 Repairs and Maintenance Services	1,147.96	2,483.35		3,631.31
<b>Total Purchased Property Services</b>	<b>\$1,147.96</b>	<b>\$2,483.35</b>		<b>\$3,631.31</b>
<b>500 Other Purchased Services</b>				
510 Student Transportation Services		244.05		244.05
530 Communications	18,373.98	18,373.99		36,747.97
562 Tuition To Pennsylvania Charter Schools	102,256.64	102,256.65		204,513.29
580 Travel		359.41		359.41
<b>Total Other Purchased Services</b>	<b>\$120,630.62</b>	<b>\$121,234.10</b>		<b>\$241,864.72</b>
<b>600 Supplies</b>				
610 General Supplies	38,035.02	23,958.23	1,790.93	63,784.18
640 Books and Periodicals	45,438.75	43,316.78	38,732.51	127,488.04
650 Supplies & Fees – Technology Related	28,043.98	63,545.56		91,589.54
<b>Total Supplies</b>	<b>\$111,517.75</b>	<b>\$130,820.57</b>	<b>\$40,523.44</b>	<b>\$282,861.76</b>
<b>700 Property</b>				
752 Capital Equipment – Original and Additional	1,145.50	1,145.50	2,009.46	4,300.46
758 Capitalized Technology Software - Original	2,400.00	42,964.56		45,364.56
766 Capitalized Technology Hardware and Equipment – Replacement	215.49	215.49		430.98
768 Capitalized Technology Software - Replacement	16,116.66	15,308.03		31,424.69
<b>Total Property</b>	<b>\$19,877.65</b>	<b>\$59,633.58</b>	<b>\$2,009.46</b>	<b>\$81,520.69</b>
<b>800 Other Objects</b>				
810 Dues and Fees	605.00	2,720.98		3,325.98
<b>Total Other Objects</b>	<b>\$605.00</b>	<b>\$2,720.98</b>		<b>\$3,325.98</b>
<b>Total 1100 Regular Programs – Elementary / Secondary</b>	<b>\$3,312,291.76</b>	<b>\$3,026,144.40</b>	<b>\$247,170.90</b>	<b>\$6,585,607.06</b>

LEA : 110179003 West Branch Area SD

Printed 11/2/2017 11:15:07 AM

Page - 4 of 27

**General Fund (10)****1110 Regular Programs**

	<u>Elementary</u>	<u>Secondary</u>	<u>Federal</u>	<u>Total</u>
<b>100 Personnel Services – Salaries</b>				
100 Personnel Services – Salaries	1,822,937.07	1,607,059.33		3,429,996.40
<b>Total Personnel Services – Salaries</b>	<b>\$1,822,937.07</b>	<b>\$1,607,059.33</b>		<b>\$3,429,996.40</b>
<b>200 Personnel Services – Employee Benefits</b>				
210 Group Insurance – Contracted Provider	3,326.42	2,916.20	5.20	6,247.82
220 Social Security Contributions	135,851.99	119,365.65		255,217.64
230 PSERS Retirement Contributions	638,325.10	446,776.53		1,085,101.63
250 Unemployment Compensation	597.00	118.92		715.92
260 Workers' Compensation	7,746.06	7,456.40		15,202.46
270 Group Insurance – Self-Insurance	410,584.47	432,166.40	2,117.03	844,867.90
280 Other Post-Employment Benefits (OPEB)	36,922.14	38,097.91		75,020.05
<b>Total Personnel Services – Employee Benefits</b>	<b>\$1,233,353.18</b>	<b>\$1,046,898.01</b>	<b>\$2,122.23</b>	<b>\$2,282,373.42</b>
<b>300 Purchased Professional and Technical Services</b>				
329 Professional Educational Services – Other	(1,367.95)	51,703.99		50,336.04
340 Technical Services	1,796.98	1,796.99		3,593.97
350 Security / Safety Services	1,793.50	1,793.50		3,587.00
<b>Total Purchased Professional and Technical Services</b>	<b>\$2,222.53</b>	<b>\$55,294.48</b>		<b>\$57,517.01</b>
<b>400 Purchased Property Services</b>				
430 Repairs and Maintenance Services	1,147.96	2,483.35		3,631.31
<b>Total Purchased Property Services</b>	<b>\$1,147.96</b>	<b>\$2,483.35</b>		<b>\$3,631.31</b>
<b>500 Other Purchased Services</b>				
510 Student Transportation Services		244.05		244.05
530 Communications	18,373.98	18,373.99		36,747.97
562 Tuition To Pennsylvania Charter Schools	102,256.64	102,256.65		204,513.29
580 Travel		359.41		359.41
<b>Total Other Purchased Services</b>	<b>\$120,630.62</b>	<b>\$121,234.10</b>		<b>\$241,864.72</b>
<b>600 Supplies</b>				
610 General Supplies	38,035.02	23,958.23	1,654.43	63,647.68
640 Books and Periodicals	45,438.75	43,316.78	23,267.08	112,022.61
650 Supplies & Fees – Technology Related	28,043.98	63,545.56		91,589.54
<b>Total Supplies</b>	<b>\$111,517.75</b>	<b>\$130,820.57</b>	<b>\$24,921.51</b>	<b>\$267,259.83</b>
<b>700 Property</b>				
752 Capital Equipment – Original and Additional	1,145.50	1,145.50	2,009.46	4,300.46
758 Capitalized Technology Software - Original	2,400.00	42,964.56		45,364.56
766 Capitalized Technology Hardware and Equipment – Replacement	215.49	215.49		430.98
768 Capitalized Technology Software - Replacement	16,116.66	15,308.03		31,424.69
<b>Total Property</b>	<b>\$19,877.65</b>	<b>\$59,633.58</b>	<b>\$2,009.46</b>	<b>\$81,520.69</b>
<b>800 Other Objects</b>				
810 Dues and Fees	605.00	2,720.98		3,325.98
<b>Total Other Objects</b>	<b>\$605.00</b>	<b>\$2,720.98</b>		<b>\$3,325.98</b>
<b>Total 1110 Regular Programs</b>	<b>\$3,312,291.76</b>	<b>\$3,026,144.40</b>	<b>\$29,053.20</b>	<b>\$6,367,489.36</b>

**General Fund (10)**

	<u>Elementary</u>	<u>Secondary</u>	<u>Federal</u>	<u>Total</u>
<b>1190 Federally-Funded Regular Programs</b>				
<b>100 Personnel Services – Salaries</b>				
100 Personnel Services – Salaries			117,646.55	117,646.55
<b>Total Personnel Services – Salaries</b>			<b>\$117,646.55</b>	<b>\$117,646.55</b>
<b>200 Personnel Services – Employee Benefits</b>				
210 Group Insurance – Contracted Provider			179.23	179.23
220 Social Security Contributions			8,890.32	8,890.32
230 PSERS Retirement Contributions			34,091.59	34,091.59
260 Workers' Compensation			53.38	53.38
270 Group Insurance – Self-Insurance			38,728.63	38,728.63
<b>Total Personnel Services – Employee Benefits</b>			<b>\$81,943.15</b>	<b>\$81,943.15</b>
<b>300 Purchased Professional and Technical Services</b>				
322 Professional Educational Services – lus			212.96	212.96
329 Professional Educational Services – Other			2,713.11	2,713.11
<b>Total Purchased Professional and Technical Services</b>			<b>\$2,926.07</b>	<b>\$2,926.07</b>
<b>600 Supplies</b>				
610 General Supplies			136.50	136.50
640 Books and Periodicals			15,465.43	15,465.43
<b>Total Supplies</b>			<b>\$15,601.93</b>	<b>\$15,601.93</b>
<b>Total 1190 Federally-Funded Regular Programs</b>			<b>\$218,117.70</b>	<b>\$218,117.70</b>

**General Fund (10)**

**1200 Special Programs – Elementary / Secondary**

	<u>Elementary</u>	<u>Secondary</u>	<u>Federal</u>	<u>Total</u>
<b>100 Personnel Services – Salaries</b>				
100 Personnel Services – Salaries	427,180.98	370,736.26	207,932.76	1,005,850.00
<b>Total Personnel Services – Salaries</b>	<b>\$427,180.98</b>	<b>\$370,736.26</b>	<b>\$207,932.76</b>	<b>\$1,005,850.00</b>
<b>200 Personnel Services – Employee Benefits</b>				
210 Group Insurance – Contracted Provider	807.98	713.16	40.86	1,562.00
220 Social Security Contributions	36,767.84	30,165.50	7,649.26	74,582.60
230 PSERS Retirement Contributions	133,465.80	110,054.14	38,180.40	281,700.34
260 Workers' Compensation	1,888.31	1,720.14		3,608.45
270 Group Insurance – Self-Insurance	116,091.73	77,197.18	38,905.86	232,194.77
<b>Total Personnel Services – Employee Benefits</b>	<b>\$289,021.66</b>	<b>\$219,850.12</b>	<b>\$84,776.38</b>	<b>\$593,648.16</b>
<b>300 Purchased Professional and Technical Services</b>				
322 Professional Educational Services – lus	171,571.74	302,998.47		474,570.21
329 Professional Educational Services – Other	24,222.56	25,316.05		49,538.61
<b>Total Purchased Professional and Technical Services</b>	<b>\$195,794.30</b>	<b>\$328,314.52</b>		<b>\$524,108.82</b>
<b>500 Other Purchased Services</b>				
561 Tuition To Other School Districts Within the State	5,499.00	5,499.00		10,998.00
562 Tuition To Pennsylvania Charter Schools	64,612.29	64,612.29		129,224.58
580 Travel	43.22	150.00		193.22
597 Direct Payments To Intermediate Units for Institutionalized Childrens' Program	1,740.61	1,740.61		3,481.22
<b>Total Other Purchased Services</b>	<b>\$71,895.12</b>	<b>\$72,001.90</b>		<b>\$143,897.02</b>
<b>600 Supplies</b>				
610 General Supplies	4,039.66	1,949.24		5,988.90
640 Books and Periodicals	2,486.37	1,532.58		4,018.95
650 Supplies & Fees – Technology Related	541.42	541.42		1,082.84
<b>Total Supplies</b>	<b>\$7,067.45</b>	<b>\$4,023.24</b>		<b>\$11,090.69</b>
<b>700 Property</b>				
752 Capital Equipment – Original and Additional			6,102.92	6,102.92
758 Capitalized Technology Software - Original	79.13	79.15	630.70	788.98
<b>Total Property</b>	<b>\$79.13</b>	<b>\$79.15</b>	<b>\$6,733.62</b>	<b>\$6,891.90</b>
<b>Total 1200 Special Programs – Elementary / Secondary</b>	<b>\$991,038.64</b>	<b>\$995,005.19</b>	<b>\$299,442.76</b>	<b>\$2,285,486.59</b>



**General Fund (10)**

**1210 Life Skills Support**

	<u>Elementary</u>	<u>Secondary</u>	<u>Federal</u>	<u>Total</u>
<b>100 Personnel Services – Salaries</b>				
100 Personnel Services – Salaries	104,309.02	66,295.63	15,034.41	185,639.06
<b>Total Personnel Services – Salaries</b>	<b>\$104,309.02</b>	<b>\$66,295.63</b>	<b>\$15,034.41</b>	<b>\$185,639.06</b>
<b>200 Personnel Services – Employee Benefits</b>				
210 Group Insurance – Contracted Provider	111.52	117.64	14.36	243.52
220 Social Security Contributions	7,677.94	5,481.35	679.41	13,838.70
230 PSERS Retirement Contributions	28,995.41	19,593.25	3,234.74	51,823.40
260 Workers' Compensation	483.97	307.59		791.56
270 Group Insurance – Self-Insurance	16,425.33	5,931.55	737.09	23,093.97
<b>Total Personnel Services – Employee Benefits</b>	<b>\$53,694.17</b>	<b>\$31,431.38</b>	<b>\$4,665.60</b>	<b>\$89,791.15</b>
<b>300 Purchased Professional and Technical Services</b>				
322 Professional Educational Services – lus		1,048.84		1,048.84
329 Professional Educational Services – Other	2,318.05	1,561.19		3,879.24
<b>Total Purchased Professional and Technical Services</b>	<b>\$2,318.05</b>	<b>\$2,610.03</b>		<b>\$4,928.08</b>
<b>500 Other Purchased Services</b>				
580 Travel	43.22	150.00		193.22
<b>Total Other Purchased Services</b>	<b>\$43.22</b>	<b>\$150.00</b>		<b>\$193.22</b>
<b>600 Supplies</b>				
610 General Supplies	1,092.50	913.94		2,006.44
650 Supplies & Fees – Technology Related	541.42	541.42		1,082.84
<b>Total Supplies</b>	<b>\$1,633.92</b>	<b>\$1,455.36</b>		<b>\$3,089.28</b>
<b>Total 1210 Life Skills Support</b>	<b>\$161,998.38</b>	<b>\$101,942.40</b>	<b>\$19,700.01</b>	<b>\$283,640.79</b>

**General Fund (10)**

**1220 Sensory Support**

	<u>Elementary</u>	<u>Secondary</u>	<u>Federal</u>	<u>Total</u>
<b>100 Personnel Services – Salaries</b>				
100 Personnel Services – Salaries	57,521.00	57,521.00		115,042.00
<b>Total Personnel Services – Salaries</b>	<b>\$57,521.00</b>	<b>\$57,521.00</b>		<b>\$115,042.00</b>
<b>200 Personnel Services – Employee Benefits</b>				
210 Group Insurance – Contracted Provider	111.52	111.53		223.05
220 Social Security Contributions	4,156.94	4,156.94		8,313.88
230 PSERS Retirement Contributions	15,989.44	15,989.44		31,978.88
260 Workers' Compensation	266.88	266.89		533.77
270 Group Insurance – Self-Insurance	19,107.90	19,107.91		38,215.81
<b>Total Personnel Services – Employee Benefits</b>	<b>\$39,632.68</b>	<b>\$39,632.71</b>		<b>\$79,265.39</b>
<b>300 Purchased Professional and Technical Services</b>				
329 Professional Educational Services – Other	4,047.36	4,047.36		8,094.72
<b>Total Purchased Professional and Technical Services</b>	<b>\$4,047.36</b>	<b>\$4,047.36</b>		<b>\$8,094.72</b>
<b>600 Supplies</b>				
610 General Supplies	707.03	105.11		812.14
640 Books and Periodicals	1,079.00	895.00		1,974.00
<b>Total Supplies</b>	<b>\$1,786.03</b>	<b>\$1,000.11</b>		<b>\$2,786.14</b>
<b>700 Property</b>				
752 Capital Equipment – Original and Additional			6,102.92	6,102.92
758 Capitalized Technology Software - Original	76.64	76.65	630.70	783.99
<b>Total Property</b>	<b>\$76.64</b>	<b>\$76.65</b>	<b>\$6,733.62</b>	<b>\$6,886.91</b>
<b>Total 1220 Sensory Support</b>	<b>\$103,063.71</b>	<b>\$102,277.83</b>	<b>\$6,733.62</b>	<b>\$212,075.16</b>

**General Fund (10)**

**1230 Emotional Support**

**100 Personnel Services – Salaries**

	<u>Elementary</u>	<u>Secondary</u>	<u>Federal</u>	<u>Total</u>
100 Personnel Services – Salaries		21,462.09		21,462.09
<b>Total Personnel Services – Salaries</b>		<b>\$21,462.09</b>		<b>\$21,462.09</b>

**200 Personnel Services – Employee Benefits**

210 Group Insurance – Contracted Provider		30.65		30.65
220 Social Security Contributions		1,604.41		1,604.41
230 PSERS Retirement Contributions		5,965.92		5,965.92
260 Workers' Compensation		99.58		99.58
270 Group Insurance – Self-Insurance		6,489.98		6,489.98
<b>Total Personnel Services – Employee Benefits</b>		<b>\$14,190.54</b>		<b>\$14,190.54</b>

**300 Purchased Professional and Technical Services**

322 Professional Educational Services – lus	74,890.00	206,673.47		281,563.47
329 Professional Educational Services – Other		13,775.00		13,775.00
<b>Total Purchased Professional and Technical Services</b>	<b>\$74,890.00</b>	<b>\$220,448.47</b>		<b>\$295,338.47</b>

**600 Supplies**

610 General Supplies	59.95			59.95
640 Books and Periodicals	37.10	139.67		176.77
<b>Total Supplies</b>	<b>\$97.05</b>	<b>\$139.67</b>		<b>\$236.72</b>

**Total 1230 Emotional Support**

	<b>\$74,987.05</b>	<b>\$256,240.77</b>		<b>\$331,227.82</b>
--	--------------------	---------------------	--	---------------------

**General Fund (10)**

**1240 Academic Support**

	<u>Elementary</u>	<u>Secondary</u>	<u>Federal</u>	<u>Total</u>
<b>100 Personnel Services – Salaries</b>				
100 Personnel Services – Salaries	265,350.96	225,457.54	192,898.35	683,706.85
<b>Total Personnel Services – Salaries</b>	<b>\$265,350.96</b>	<b>\$225,457.54</b>	<b>\$192,898.35</b>	<b>\$683,706.85</b>
<b>200 Personnel Services – Employee Benefits</b>				
210 Group Insurance – Contracted Provider	584.94	453.34	26.50	1,064.78
220 Social Security Contributions	24,932.96	18,922.80	6,969.85	50,825.61
230 PSERS Retirement Contributions	88,480.95	68,505.53	34,945.66	191,932.14
260 Workers' Compensation	1,137.46	1,046.08		2,183.54
270 Group Insurance – Self-Insurance	80,558.50	45,667.74	38,168.77	164,395.01
<b>Total Personnel Services – Employee Benefits</b>	<b>\$195,694.81</b>	<b>\$134,595.49</b>	<b>\$80,110.78</b>	<b>\$410,401.08</b>
<b>300 Purchased Professional and Technical Services</b>				
322 Professional Educational Services – lus	2,476.39	1,070.81		3,547.20
329 Professional Educational Services – Other	17,857.15	5,932.50		23,789.65
<b>Total Purchased Professional and Technical Services</b>	<b>\$20,333.54</b>	<b>\$7,003.31</b>		<b>\$27,336.85</b>
<b>600 Supplies</b>				
610 General Supplies	2,180.18	930.19		3,110.37
640 Books and Periodicals	1,370.27	497.91		1,868.18
<b>Total Supplies</b>	<b>\$3,550.45</b>	<b>\$1,428.10</b>		<b>\$4,978.55</b>
<b>700 Property</b>				
758 Capitalized Technology Software - Original	2.49	2.50		4.99
<b>Total Property</b>	<b>\$2.49</b>	<b>\$2.50</b>		<b>\$4.99</b>
<b>Total 1240 Academic Support</b>	<b>\$484,932.25</b>	<b>\$368,486.94</b>	<b>\$273,009.13</b>	<b>\$1,126,428.32</b>

**General Fund (10)**

**1241 Learning Support – Public**

	<u>Elementary</u>	<u>Secondary</u>	<u>Federal</u>	<u>Total</u>
<b>100 Personnel Services – Salaries</b>				
100 Personnel Services – Salaries	261,213.36	221,319.94	192,898.35	675,431.65
<b>Total Personnel Services – Salaries</b>	<b>\$261,213.36</b>	<b>\$221,319.94</b>	<b>\$192,898.35</b>	<b>\$675,431.65</b>
<b>200 Personnel Services – Employee Benefits</b>				
210 Group Insurance – Contracted Provider	578.00	446.40	26.50	1,050.90
220 Social Security Contributions	24,625.88	18,615.72	6,969.85	50,211.45
230 PSERS Retirement Contributions	87,330.78	67,355.36	34,945.66	189,631.80
260 Workers' Compensation	1,118.26	1,026.88		2,145.14
270 Group Insurance – Self-Insurance	79,369.36	44,478.60	38,168.77	162,016.73
<b>Total Personnel Services – Employee Benefits</b>	<b>\$193,022.28</b>	<b>\$131,922.96</b>	<b>\$80,110.78</b>	<b>\$405,056.02</b>
<b>300 Purchased Professional and Technical Services</b>				
322 Professional Educational Services – lus	2,476.39	1,070.81		3,547.20
329 Professional Educational Services – Other	17,857.15	5,932.50		23,789.65
<b>Total Purchased Professional and Technical Services</b>	<b>\$20,333.54</b>	<b>\$7,003.31</b>		<b>\$27,336.85</b>
<b>600 Supplies</b>				
610 General Supplies	1,993.72	930.19		2,923.91
640 Books and Periodicals	1,370.27	497.91		1,868.18
<b>Total Supplies</b>	<b>\$3,363.99</b>	<b>\$1,428.10</b>		<b>\$4,792.09</b>
<b>700 Property</b>				
758 Capitalized Technology Software - Original	2.49	2.50		4.99
<b>Total Property</b>	<b>\$2.49</b>	<b>\$2.50</b>		<b>\$4.99</b>
<b>Total 1241 Learning Support – Public</b>	<b>\$477,935.66</b>	<b>\$361,676.81</b>	<b>\$273,009.13</b>	<b>\$1,112,621.60</b>

General Fund (10)

1243 Gifted Support

100 Personnel Services – Salaries

	<u>Elementary</u>	<u>Secondary</u>	<u>Federal</u>	<u>Total</u>
100 Personnel Services – Salaries	4,137.60	4,137.60		8,275.20
<b>Total Personnel Services – Salaries</b>	<b>\$4,137.60</b>	<b>\$4,137.60</b>		<b>\$8,275.20</b>

200 Personnel Services – Employee Benefits

210 Group Insurance – Contracted Provider	6.94	6.94		13.88
220 Social Security Contributions	307.08	307.08		614.16
230 PSERS Retirement Contributions	1,150.17	1,150.17		2,300.34
260 Workers' Compensation	19.20	19.20		38.40
270 Group Insurance – Self-Insurance	1,189.14	1,189.14		2,378.28
<b>Total Personnel Services – Employee Benefits</b>	<b>\$2,672.53</b>	<b>\$2,672.53</b>		<b>\$5,345.06</b>

600 Supplies

610 General Supplies	186.46			186.46
<b>Total Supplies</b>	<b>\$186.46</b>			<b>\$186.46</b>

<b>Total 1243 Gifted Support</b>	<b>\$6,996.59</b>	<b>\$6,810.13</b>		<b>\$13,806.72</b>
----------------------------------	-------------------	-------------------	--	--------------------

General Fund (10)

	<u>Elementary</u>	<u>Secondary</u>	<u>Federal</u>	<u>Total</u>
<b>1290 Special Programs - Other Support</b>				
<b>300 <u>Purchased Professional and Technical Services</u></b>				
322 Professional Educational Services – lus	94,205.35	94,205.35		188,410.70
<b>Total Purchased Professional and Technical Services</b>	<b>\$94,205.35</b>	<b>\$94,205.35</b>		<b>\$188,410.70</b>
<b>500 <u>Other Purchased Services</u></b>				
561 Tuition To Other School Districts Within the State	5,499.00	5,499.00		10,998.00
562 Tuition To Pennsylvania Charter Schools	64,612.29	64,612.29		129,224.58
597 Direct Payments To Intermediate Units for Institutionalized Childrens' Program	1,740.61	1,740.61		3,481.22
<b>Total Other Purchased Services</b>	<b>\$71,851.90</b>	<b>\$71,851.90</b>		<b>\$143,703.80</b>
<b>Total 1290 Special Programs - Other Support</b>	<b>\$166,057.25</b>	<b>\$166,057.25</b>		<b>\$332,114.50</b>

**General Fund (10)**

**1300 Vocational Education**

	<u>Elementary</u>	<u>Secondary</u>	<u>Federal</u>	<u>Total</u>
<b>100 Personnel Services – Salaries</b>				
100 Personnel Services – Salaries		145,717.61		145,717.61
<b>Total Personnel Services – Salaries</b>		<b>\$145,717.61</b>		<b>\$145,717.61</b>
<b>200 Personnel Services – Employee Benefits</b>				
210 Group Insurance – Contracted Provider		282.64		282.64
220 Social Security Contributions		10,978.63		10,978.63
230 PSERS Retirement Contributions		40,505.96		40,505.96
260 Workers' Compensation		676.10		676.10
270 Group Insurance – Self-Insurance		15,542.81		15,542.81
292 Health Savings Accounts		222.55		222.55
<b>Total Personnel Services – Employee Benefits</b>		<b>\$68,208.69</b>		<b>\$68,208.69</b>
<b>300 Purchased Professional and Technical Services</b>				
329 Professional Educational Services – Other		1,976.68		1,976.68
<b>Total Purchased Professional and Technical Services</b>		<b>\$1,976.68</b>		<b>\$1,976.68</b>
<b>500 Other Purchased Services</b>				
564 Tuition To Career and Technology Centers		569,561.61		569,561.61
<b>Total Other Purchased Services</b>		<b>\$569,561.61</b>		<b>\$569,561.61</b>
<b>600 Supplies</b>				
610 General Supplies		3,400.89		3,400.89
<b>Total Supplies</b>		<b>\$3,400.89</b>		<b>\$3,400.89</b>
<b>Total 1300 Vocational Education</b>		<b>\$788,865.48</b>		<b>\$788,865.48</b>



**General Fund (10)**

	<u>Elementary</u>	<u>Secondary</u>	<u>Federal</u>	<u>Total</u>
<b>1400 Other Instructional Programs – Elementary / Secondary</b>				
<b>100 Personnel Services – Salaries</b>				
100 Personnel Services – Salaries	7,403.21	48,043.97		55,447.18
<b>Total Personnel Services – Salaries</b>	<b>\$7,403.21</b>	<b>\$48,043.97</b>		<b>\$55,447.18</b>
<b>200 Personnel Services – Employee Benefits</b>				
210 Group Insurance – Contracted Provider	5.57	27.88		33.45
220 Social Security Contributions	553.94	3,655.46		4,209.40
230 PSERS Retirement Contributions	2,053.72	13,128.15		15,181.87
260 Workers' Compensation	34.34	222.92		257.26
270 Group Insurance – Self-Insurance	3,234.35	158.29		3,392.64
<b>Total Personnel Services – Employee Benefits</b>	<b>\$5,881.92</b>	<b>\$17,192.70</b>		<b>\$23,074.62</b>
<b>300 Purchased Professional and Technical Services</b>				
329 Professional Educational Services – Other		3,332.29		3,332.29
<b>Total Purchased Professional and Technical Services</b>		<b>\$3,332.29</b>		<b>\$3,332.29</b>
<b>400 Purchased Property Services</b>				
430 Repairs and Maintenance Services		697.44		697.44
<b>Total Purchased Property Services</b>		<b>\$697.44</b>		<b>\$697.44</b>
<b>500 Other Purchased Services</b>				
561 Tuition To Other School Districts Within the State	8,979.56	8,979.56		17,959.12
568 Tuition To Private Residential Rehabilitative Institutions (PRRI) [In-State] and Detention Centers		23,695.00		23,695.00
580 Travel	194.63	1,212.51		1,407.14
<b>Total Other Purchased Services</b>	<b>\$9,174.19</b>	<b>\$33,887.07</b>		<b>\$43,061.26</b>
<b>600 Supplies</b>				
620 Energy		483.47		483.47
<b>Total Supplies</b>		<b>\$483.47</b>		<b>\$483.47</b>
<b>800 Other Objects</b>				
810 Dues and Fees		45,955.00		45,955.00
<b>Total Other Objects</b>		<b>\$45,955.00</b>		<b>\$45,955.00</b>
<b>Total 1400 Other Instructional Programs – Elementary / Secondary</b>	<b>\$22,459.32</b>	<b>\$149,591.94</b>		<b>\$172,051.26</b>

**General Fund (10)**

**1410 Drivers' Education**

	<u>Elementary</u>	<u>Secondary</u>	<u>Federal</u>	<u>Total</u>
<b>100 Personnel Services – Salaries</b>				
100 Personnel Services – Salaries		21,218.27		21,218.27
<b>Total Personnel Services – Salaries</b>		<b>\$21,218.27</b>		<b>\$21,218.27</b>
<b>200 Personnel Services – Employee Benefits</b>				
210 Group Insurance – Contracted Provider		27.88		27.88
220 Social Security Contributions		1,614.89		1,614.89
230 PSERS Retirement Contributions		5,717.33		5,717.33
260 Workers' Compensation		98.45		98.45
270 Group Insurance – Self-Insurance		158.29		158.29
<b>Total Personnel Services – Employee Benefits</b>		<b>\$7,616.84</b>		<b>\$7,616.84</b>
<b>400 Purchased Property Services</b>				
430 Repairs and Maintenance Services		697.44		697.44
<b>Total Purchased Property Services</b>		<b>\$697.44</b>		<b>\$697.44</b>
<b>600 Supplies</b>				
620 Energy		483.47		483.47
<b>Total Supplies</b>		<b>\$483.47</b>		<b>\$483.47</b>
<b>800 Other Objects</b>				
810 Dues and Fees		(5,500.00)		(5,500.00)
<b>Total Other Objects</b>		<b>(\$5,500.00)</b>		<b>(\$5,500.00)</b>
<b>Total 1410 Drivers' Education</b>		<b>\$24,516.02</b>		<b>\$24,516.02</b>

**General Fund (10)**

**1420 Summer School**

**100 Personnel Services – Salaries**

	<u>Elementary</u>	<u>Secondary</u>	<u>Federal</u>	<u>Total</u>
100 Personnel Services – Salaries	4,475.21	6,671.70		11,146.91
<b>Total Personnel Services – Salaries</b>	<b>\$4,475.21</b>	<b>\$6,671.70</b>		<b>\$11,146.91</b>

**200 Personnel Services – Employee Benefits**

210 Group Insurance – Contracted Provider	5.57			5.57
220 Social Security Contributions	331.09	506.53		837.62
230 PSERS Retirement Contributions	1,239.80	1,808.48		3,048.28
260 Workers' Compensation	20.76	30.96		51.72
270 Group Insurance – Self-Insurance	3,234.35			3,234.35

<b>Total Personnel Services – Employee Benefits</b>	<b>\$4,831.57</b>	<b>\$2,345.97</b>		<b>\$7,177.54</b>
<b>Total 1420 Summer School</b>	<b>\$9,306.78</b>	<b>\$9,017.67</b>		<b>\$18,324.45</b>

General Fund (10)

	<u>Elementary</u>	<u>Secondary</u>	<u>Federal</u>	<u>Total</u>
<b>1430 Homebound Instruction</b>				
<b>100 Personnel Services – Salaries</b>				
100 Personnel Services – Salaries	2,928.00	20,154.00		23,082.00
<b>Total Personnel Services – Salaries</b>	<b>\$2,928.00</b>	<b>\$20,154.00</b>		<b>\$23,082.00</b>
<b>200 Personnel Services – Employee Benefits</b>				
220 Social Security Contributions	222.85	1,534.04		1,756.89
230 PSERS Retirement Contributions	813.92	5,602.34		6,416.26
260 Workers’ Compensation	13.58	93.51		107.09
<b>Total Personnel Services – Employee Benefits</b>	<b>\$1,050.35</b>	<b>\$7,229.89</b>		<b>\$8,280.24</b>
<b>500 Other Purchased Services</b>				
580 Travel	194.63	1,212.51		1,407.14
<b>Total Other Purchased Services</b>	<b>\$194.63</b>	<b>\$1,212.51</b>		<b>\$1,407.14</b>
<b>Total 1430 Homebound Instruction</b>	<b>\$4,172.98</b>	<b>\$28,596.40</b>		<b>\$32,769.38</b>

General Fund (10)

	<u>Elementary</u>	<u>Secondary</u>	<u>Federal</u>	<u>Total</u>
<b>1440 Alternative Regular Education Programs</b>				
<b>300 <u>Purchased Professional and Technical Services</u></b>				
329 Professional Educational Services – Other		3,332.29		3,332.29
<b>Total Purchased Professional and Technical Services</b>		<b>\$3,332.29</b>		<b>\$3,332.29</b>
<b>500 <u>Other Purchased Services</u></b>				
561 Tuition To Other School Districts Within the State	8,979.56	8,979.56		17,959.12
568 Tuition To Private Residential Rehabilitative Institutions (PRRI) [In-State] and Detention Centers		23,695.00		23,695.00
<b>Total Other Purchased Services</b>	<b>\$8,979.56</b>	<b>\$32,674.56</b>		<b>\$41,654.12</b>
<b>800 <u>Other Objects</u></b>				
810 Dues and Fees		51,455.00		51,455.00
<b>Total Other Objects</b>		<b>\$51,455.00</b>		<b>\$51,455.00</b>
<b>Total 1440 Alternative Regular Education Programs</b>	<b>\$8,979.56</b>	<b>\$87,461.85</b>		<b>\$96,441.41</b>

General Fund (10)

1441 Adjudicated / Court-Placed Programs

500 Other Purchased Services

561 Tuition To Other School Districts Within the State

Total Other Purchased Services

Total 1441 Adjudicated / Court-Placed Programs

	<u>Elementary</u>	<u>Secondary</u>	<u>Federal</u>	<u>Total</u>
561 Tuition To Other School Districts Within the State	8,979.56	8,979.56		17,959.12
<b>Total Other Purchased Services</b>	<b>\$8,979.56</b>	<b>\$8,979.56</b>		<b>\$17,959.12</b>
<b>Total 1441 Adjudicated / Court-Placed Programs</b>	<b>\$8,979.56</b>	<b>\$8,979.56</b>		<b>\$17,959.12</b>

General Fund (10)

	<u>Elementary</u>	<u>Secondary</u>	<u>Federal</u>	<u>Total</u>
<b>1442 Alternative Education Programs</b>				
<b>300 <u>Purchased Professional and Technical Services</u></b>				
329 Professional Educational Services – Other		3,332.29		3,332.29
<b>Total Purchased Professional and Technical Services</b>		<b>\$3,332.29</b>		<b>\$3,332.29</b>
<b>500 <u>Other Purchased Services</u></b>				
568 Tuition To Private Residential Rehabilitative Institutions (PRRI) [In-State] and Detention Centers		23,695.00		23,695.00
<b>Total Other Purchased Services</b>		<b>\$23,695.00</b>		<b>\$23,695.00</b>
<b>800 <u>Other Objects</u></b>				
810 Dues and Fees		51,455.00		51,455.00
<b>Total Other Objects</b>		<b>\$51,455.00</b>		<b>\$51,455.00</b>
<b>Total 1442 Alternative Education Programs</b>		<b>\$78,482.29</b>		<b>\$78,482.29</b>

**General Fund (10)**

**1800 Pre-Kindergarten**

	<u>Elementary</u>	<u>Secondary</u>	<u>Federal</u>	<u>Total</u>
<b>100 Personnel Services – Salaries</b>				
100 Personnel Services – Salaries			74,118.97	111,904.95
<b>Total Personnel Services – Salaries</b>			<b>\$74,118.97</b>	<b>\$111,904.95</b>
<b>200 Personnel Services – Employee Benefits</b>				
210 Group Insurance – Contracted Provider			118.22	146.67
220 Social Security Contributions			4,116.09	4,449.21
230 PSERS Retirement Contributions			19,249.35	28,875.17
270 Group Insurance – Self-Insurance			17,920.60	30,679.93
<b>Total Personnel Services – Employee Benefits</b>			<b>\$41,404.26</b>	<b>\$64,150.98</b>
<b>300 Purchased Professional and Technical Services</b>				
324 Professional Educational Services – Employee Training and Development Services				225.00
329 Professional Educational Services – Other			2,517.33	4,318.43
<b>Total Purchased Professional and Technical Services</b>			<b>\$2,517.33</b>	<b>\$4,543.43</b>
<b>400 Purchased Property Services</b>				
430 Repairs and Maintenance Services				12,750.00
<b>Total Purchased Property Services</b>				<b>\$12,750.00</b>
<b>500 Other Purchased Services</b>				
510 Student Transportation Services				665.00
570 Food Service Management				2,947.00
580 Travel			31.72	152.79
<b>Total Other Purchased Services</b>			<b>\$31.72</b>	<b>\$3,764.79</b>
<b>600 Supplies</b>				
610 General Supplies			8,451.60	13,498.97
630 Food				477.00
640 Books and Periodicals				1,096.77
<b>Total Supplies</b>			<b>\$8,451.60</b>	<b>\$15,072.74</b>
<b>700 Property</b>				
752 Capital Equipment – Original and Additional			13,538.00	18,656.46
758 Capitalized Technology Software - Original				2,074.00
<b>Total Property</b>			<b>\$13,538.00</b>	<b>\$20,730.46</b>
<b>Total 1800 Pre-Kindergarten</b>			<b>\$140,061.88</b>	<b>\$232,917.35</b>



**General Fund (10)**

**1801 Pre-K Instruction**

	<u>Elementary</u>	<u>Secondary</u>	<u>Federal</u>	<u>Total</u>
<b>100 Personnel Services – Salaries</b>				
100 Personnel Services – Salaries			74,118.97	111,904.95
<b>Total Personnel Services – Salaries</b>			<b>\$74,118.97</b>	<b>\$111,904.95</b>
<b>200 Personnel Services – Employee Benefits</b>				
210 Group Insurance – Contracted Provider			118.22	146.67
220 Social Security Contributions			4,116.09	4,449.21
230 PSERS Retirement Contributions			19,249.35	28,875.17
270 Group Insurance – Self-Insurance			17,920.60	30,679.93
<b>Total Personnel Services – Employee Benefits</b>			<b>\$41,404.26</b>	<b>\$64,150.98</b>
<b>300 Purchased Professional and Technical Services</b>				
324 Professional Educational Services – Employee Training and Development Services				225.00
329 Professional Educational Services – Other			2,517.33	4,318.43
<b>Total Purchased Professional and Technical Services</b>			<b>\$2,517.33</b>	<b>\$4,543.43</b>
<b>400 Purchased Property Services</b>				
430 Repairs and Maintenance Services				750.00
<b>Total Purchased Property Services</b>				<b>\$750.00</b>
<b>500 Other Purchased Services</b>				
580 Travel			31.72	152.79
<b>Total Other Purchased Services</b>			<b>\$31.72</b>	<b>\$152.79</b>
<b>600 Supplies</b>				
610 General Supplies			8,396.21	11,768.58
640 Books and Periodicals				1,096.77
<b>Total Supplies</b>			<b>\$8,396.21</b>	<b>\$12,865.35</b>
<b>700 Property</b>				
752 Capital Equipment – Original and Additional			13,538.00	17,094.97
<b>Total Property</b>			<b>\$13,538.00</b>	<b>\$17,094.97</b>
<b>Total 1801 Pre-K Instruction</b>			<b>\$140,006.49</b>	<b>\$211,462.47</b>

LEA : 110179003 West Branch Area SD

Printed 11/2/2017 11:15:07 AM

General Fund (10)

1802 Pre-K Administrative Support

Elementary

Secondary

Federal

Total

600 Supplies

610 General Supplies

55.39

55.39

**Total Supplies**

**\$55.39**

**\$55.39**

**Total 1802 Pre-K Administrative Support**

**\$55.39**

**\$55.39**

**General Fund (10)**

**1803 Pre-K Operations and Maintenance**

Elementary

Secondary

Federal

Total

**400 Purchased Property Services**

430 Repairs and Maintenance Services

12,000.00

**Total Purchased Property Services**

**\$12,000.00**

**600 Supplies**

610 General Supplies

1,675.00

**Total Supplies**

**\$1,675.00**

**700 Property**

752 Capital Equipment – Original and Additional

1,561.49

758 Capitalized Technology Software - Original

2,074.00

**Total Property**

**\$3,635.49**

**Total 1803 Pre-K Operations and Maintenance**

**\$17,310.49**

General Fund (10)

1804 Pre-K Student Transportation

Elementary

Secondary

Federal

Total

500 Other Purchased Services

510 Student Transportation Services

665.00

**Total Other Purchased Services**

**\$665.00**

**Total 1804 Pre-K Student Transportation**

**\$665.00**

General Fund (10)

1805 Pre-K Food Services

Elementary

Secondary

Federal

Total

500 Other Purchased Services

570 Food Service Management

2,947.00

**Total Other Purchased Services**

**\$2,947.00**

600 Supplies

630 Food

477.00

**Total Supplies**

**\$477.00**

**Total 1805 Pre-K Food Services**

**\$3,424.00**

**General Fund (10)**

**2000 Support Services**

**Total**

**100 Personnel Services – Salaries**

100 Personnel Services – Salaries 1,814,676.03

**Total Personnel Services – Salaries \$1,814,676.03**

**200 Personnel Services – Employee Benefits**

210 Group Insurance – Contracted Provider 2,854.85

220 Social Security Contributions 134,136.94

230 PSERS Retirement Contributions 475,736.60

240 Tuition Reimbursement 1,015.13

260 Workers' Compensation 7,938.86

270 Group Insurance – Self-Insurance 594,114.58

**Total Personnel Services – Employee Benefits \$1,215,796.96**

**300 Purchased Professional and Technical Services**

310 Official / Administrative Services 86,825.06

322 Professional Educational Services – lus 625.00

324 Professional Educational Services – Employee Training and Development Services 20,297.61

329 Professional Educational Services – Other 12,392.21

330 Other Professional Services 84,930.97

350 Security / Safety Services 9,966.68

**Total Purchased Professional and Technical Services \$215,037.53**

**400 Purchased Property Services**

410 Cleaning Services 37,243.30

420 Utility Services 123,646.37

430 Repairs and Maintenance Services 71,211.67

440 Rentals 92.15

490 Other Purchased Property Services 557.98

**Total Purchased Property Services \$232,751.47**

**500 Other Purchased Services**

510 Student Transportation Services 334.91

513 Contracted Carriers 913,368.21

516 Student Transportation Services From the IU 5,894.64

520 Insurance – General 4,444.75

522 Automotive Liability Insurance 5,087.00

523 General Property and Liability Insurance 55,046.00

530 Communications 25,454.41

549 Other Advertising/Public Relations 2,544.34

580 Travel 14,363.39

**Total Other Purchased Services \$1,026,537.65**

**600 Supplies**

610 General Supplies 96,474.08

620 Energy 195,199.42

630 Food 2,414.19

640 Books and Periodicals 13,864.13

650 Supplies & Fees – Technology Related 60,795.21

LEA : 110179003 West Branch Area SD

Printed 11/2/2017 11:15:10 AM

General Fund (10)

2000 Support Services

**Total Supplies** Total  
**\$368,747.03**

**700 Property**

752 Capital Equipment – Original and Additional	41,902.62
758 Capitalized Technology Software - Original	5,356.37
762 Capitalized Equipment - Replacement	3,978.51
768 Capitalized Technology Software - Replacement	6,427.95

**Total Property** **\$57,665.45**

**800 Other Objects**

810 Dues and Fees	19,450.86
820 Claims and Judgments Against the LEA	32,656.70
890 Miscellaneous Expenditures	50.00

**Total Other Objects** **\$52,157.56**

**Total 2000 Support Services** **\$4,983,369.68**

**General Fund (10)**

**2100 Support Services – Students**

**100 Personnel Services – Salaries**

	<u>Elementary</u>	<u>Secondary</u>	<u>Federal</u>	<u>Total</u>
100 Personnel Services – Salaries	50,998.00	154,296.61		265,576.40
<b>Total Personnel Services – Salaries</b>	<b>\$50,998.00</b>	<b>\$154,296.61</b>		<b>\$265,576.40</b>

**200 Personnel Services – Employee Benefits**

210 Group Insurance – Contracted Provider	111.52	256.48		395.58
220 Social Security Contributions	3,854.01	11,455.52		19,841.88
230 PSERS Retirement Contributions	14,231.87	42,890.76		73,879.61
260 Workers' Compensation	236.62	715.90		1,232.21
270 Group Insurance – Self-Insurance	6,053.08	56,517.43		80,515.02
<b>Total Personnel Services – Employee Benefits</b>	<b>\$24,487.10</b>	<b>\$111,836.09</b>		<b>\$175,864.30</b>

**300 Purchased Professional and Technical Services**

310 Official / Administrative Services	16,575.00	16,575.00		33,150.00
<b>Total Purchased Professional and Technical Services</b>	<b>\$16,575.00</b>	<b>\$16,575.00</b>		<b>\$33,150.00</b>

**500 Other Purchased Services**

510 Student Transportation Services		334.91		334.91
530 Communications	42.33	1,930.59		1,972.92
580 Travel		742.30		742.30
<b>Total Other Purchased Services</b>	<b>\$42.33</b>	<b>\$3,007.80</b>		<b>\$3,050.13</b>

**600 Supplies**

610 General Supplies	485.96	233.57		719.53
640 Books and Periodicals	862.50	1,232.42		2,094.92
<b>Total Supplies</b>	<b>\$1,348.46</b>	<b>\$1,465.99</b>		<b>\$2,814.45</b>

**800 Other Objects**

810 Dues and Fees		360.00		360.00
<b>Total Other Objects</b>		<b>\$360.00</b>		<b>\$360.00</b>

**Total 2100 Support Services – Students**

	<b>\$93,450.89</b>	<b>\$287,541.49</b>		<b>\$480,815.28</b>
--	--------------------	---------------------	--	---------------------



**General Fund (10)**

**2120 Guidance Services**

**100 Personnel Services – Salaries**

	<u>Elementary</u>	<u>Secondary</u>	<u>Federal</u>	<u>Total</u>
100 Personnel Services – Salaries	50,998.00	154,296.61		205,294.61
<b>Total Personnel Services – Salaries</b>	<b>\$50,998.00</b>	<b>\$154,296.61</b>		<b>\$205,294.61</b>

**200 Personnel Services – Employee Benefits**

210 Group Insurance – Contracted Provider	111.52	256.48		368.00
220 Social Security Contributions	3,854.01	11,455.52		15,309.53
230 PSERS Retirement Contributions	14,231.87	42,890.76		57,122.63
260 Workers' Compensation	236.62	715.90		952.52
270 Group Insurance – Self-Insurance	6,053.08	56,517.43		62,570.51
<b>Total Personnel Services – Employee Benefits</b>	<b>\$24,487.10</b>	<b>\$111,836.09</b>		<b>\$136,323.19</b>

**500 Other Purchased Services**

510 Student Transportation Services		334.91		334.91
530 Communications		1,888.26		1,888.26
580 Travel		742.30		742.30
<b>Total Other Purchased Services</b>		<b>\$2,965.47</b>		<b>\$2,965.47</b>

**600 Supplies**

610 General Supplies	485.96	233.57		719.53
640 Books and Periodicals		138.92		138.92
<b>Total Supplies</b>	<b>\$485.96</b>	<b>\$372.49</b>		<b>\$858.45</b>

**800 Other Objects**

810 Dues and Fees		360.00		360.00
<b>Total Other Objects</b>		<b>\$360.00</b>		<b>\$360.00</b>

**Total 2120 Guidance Services**

	<b>\$75,971.06</b>	<b>\$269,830.66</b>		<b>\$345,801.72</b>
--	--------------------	---------------------	--	---------------------

General Fund (10)

2130 Attendance Services

Elementary

Secondary

Federal

Total

100 Personnel Services – Salaries

100 Personnel Services – Salaries

60,281.79

**Total Personnel Services – Salaries**

**\$60,281.79**

200 Personnel Services – Employee Benefits

210 Group Insurance – Contracted Provider

27.58

220 Social Security Contributions

4,532.35

230 PSERS Retirement Contributions

16,756.98

260 Workers' Compensation

279.69

270 Group Insurance – Self-Insurance

17,944.51

**Total Personnel Services – Employee Benefits**

**\$39,541.11**

**Total 2130 Attendance Services**

**\$99,822.90**

General Fund (10)

	<u>Elementary</u>	<u>Secondary</u>	<u>Federal</u>	<u>Total</u>
<b>2140 Psychological Services</b>				
<b>300 <u>Purchased Professional and Technical Services</u></b>				
310 Official / Administrative Services	16,575.00	16,575.00		33,150.00
<b>Total Purchased Professional and Technical Services</b>	<b>\$16,575.00</b>	<b>\$16,575.00</b>		<b>\$33,150.00</b>
<b>500 <u>Other Purchased Services</u></b>				
530 Communications	42.33	42.33		84.66
<b>Total Other Purchased Services</b>	<b>\$42.33</b>	<b>\$42.33</b>		<b>\$84.66</b>
<b>600 <u>Supplies</u></b>				
640 Books and Periodicals	862.50	1,093.50		1,956.00
<b>Total Supplies</b>	<b>\$862.50</b>	<b>\$1,093.50</b>		<b>\$1,956.00</b>
<b>Total 2140 Psychological Services</b>	<b>\$17,479.83</b>	<b>\$17,710.83</b>		<b>\$35,190.66</b>

**General Fund (10)**

**2200 Support Services – Instructional Staff**

	<u>Elementary</u>	<u>Secondary</u>	<u>Federal</u>	<u>Total</u>
<b>100 Personnel Services – Salaries</b>				
100 Personnel Services – Salaries	177,515.55	124,650.72	103,634.35	405,800.62
<b>Total Personnel Services – Salaries</b>	<b>\$177,515.55</b>	<b>\$124,650.72</b>	<b>\$103,634.35</b>	<b>\$405,800.62</b>
<b>200 Personnel Services – Employee Benefits</b>				
210 Group Insurance – Contracted Provider	420.69	282.57	(34.56)	668.70
220 Social Security Contributions	15,802.63	9,882.92	3,238.59	28,924.14
230 PSERS Retirement Contributions	55,336.72	29,892.35	18,441.51	103,670.58
240 Tuition Reimbursement	795.13	220.00		1,015.13
260 Workers' Compensation	823.63	578.35		1,401.98
270 Group Insurance – Self-Insurance	47,706.91	27,659.00	13,692.70	89,058.61
<b>Total Personnel Services – Employee Benefits</b>	<b>\$120,885.71</b>	<b>\$68,515.19</b>	<b>\$35,338.24</b>	<b>\$224,739.14</b>
<b>300 Purchased Professional and Technical Services</b>				
310 Official / Administrative Services	5,300.80	5,305.80	919.55	11,526.15
322 Professional Educational Services – Ius	600.00			600.00
324 Professional Educational Services – Employee Training and Development Services			17,272.61	17,272.61
329 Professional Educational Services – Other	0.01			0.01
<b>Total Purchased Professional and Technical Services</b>	<b>\$5,900.81</b>	<b>\$5,305.80</b>	<b>\$18,192.16</b>	<b>\$29,398.77</b>
<b>500 Other Purchased Services</b>				
520 Insurance – General	1,913.00	1,913.00		3,826.00
530 Communications	1,358.40	1,358.41		2,716.81
580 Travel	356.03	356.04	5,836.38	6,548.45
<b>Total Other Purchased Services</b>	<b>\$3,627.43</b>	<b>\$3,627.45</b>	<b>\$5,836.38</b>	<b>\$13,091.26</b>
<b>600 Supplies</b>				
610 General Supplies	942.62	882.86	9,829.84	11,655.32
640 Books and Periodicals	3,920.29	7,528.52		11,448.81
650 Supplies & Fees – Technology Related	23,199.04	23,199.07		46,398.11
<b>Total Supplies</b>	<b>\$28,061.95</b>	<b>\$31,610.45</b>	<b>\$9,829.84</b>	<b>\$69,502.24</b>
<b>700 Property</b>				
752 Capital Equipment – Original and Additional			2,139.00	2,139.00
758 Capitalized Technology Software - Original	2,038.62	2,038.62		4,077.24
768 Capitalized Technology Software - Replacement	3,213.97	3,213.98		6,427.95
<b>Total Property</b>	<b>\$5,252.59</b>	<b>\$5,252.60</b>	<b>\$2,139.00</b>	<b>\$12,644.19</b>
<b>800 Other Objects</b>				
810 Dues and Fees	297.50	297.50		595.00
<b>Total Other Objects</b>	<b>\$297.50</b>	<b>\$297.50</b>		<b>\$595.00</b>
<b>Total 2200 Support Services – Instructional Staff</b>	<b>\$341,541.54</b>	<b>\$239,259.71</b>	<b>\$174,969.97</b>	<b>\$755,771.22</b>

**General Fund (10)**

**2210 Supervision of Educational Media Services**

	<u>Elementary</u>	<u>Secondary</u>	<u>Federal</u>	<u>Total</u>
<b>100 Personnel Services – Salaries</b>				
100 Personnel Services – Salaries	51,406.86	51,406.86		102,813.72
<b>Total Personnel Services – Salaries</b>	<b>\$51,406.86</b>	<b>\$51,406.86</b>		<b>\$102,813.72</b>
<b>200 Personnel Services – Employee Benefits</b>				
210 Group Insurance – Contracted Provider	139.36	139.36		278.72
220 Social Security Contributions	3,829.78	3,829.79		7,659.57
230 PSERS Retirement Contributions	14,100.91	14,100.91		28,201.82
260 Workers' Compensation	238.51	238.52		477.03
270 Group Insurance – Self-Insurance	13,576.58	13,576.59		27,153.17
<b>Total Personnel Services – Employee Benefits</b>	<b>\$31,885.14</b>	<b>\$31,885.17</b>		<b>\$63,770.31</b>
<b>600 Supplies</b>				
650 Supplies & Fees – Technology Related	823.54	823.55		1,647.09
<b>Total Supplies</b>	<b>\$823.54</b>	<b>\$823.55</b>		<b>\$1,647.09</b>
<b>Total 2210 Supervision of Educational Media Services</b>	<b>\$84,115.54</b>	<b>\$84,115.58</b>		<b>\$168,231.12</b>

**General Fund (10)**

**2211 Supervision of Educational Media Services – Head of Component**

	<u>Elementary</u>	<u>Secondary</u>	<u>Federal</u>	<u>Total</u>
<b>100 Personnel Services – Salaries</b>				
100 Personnel Services – Salaries	51,406.86	51,406.86		102,813.72
<b>Total Personnel Services – Salaries</b>	<b>\$51,406.86</b>	<b>\$51,406.86</b>		<b>\$102,813.72</b>
<b>200 Personnel Services – Employee Benefits</b>				
210 Group Insurance – Contracted Provider	139.36	139.36		278.72
220 Social Security Contributions	3,829.78	3,829.79		7,659.57
230 PSERS Retirement Contributions	14,100.91	14,100.91		28,201.82
260 Workers' Compensation	238.51	238.52		477.03
270 Group Insurance – Self-Insurance	13,576.58	13,576.59		27,153.17
<b>Total Personnel Services – Employee Benefits</b>	<b>\$31,885.14</b>	<b>\$31,885.17</b>		<b>\$63,770.31</b>
<b>600 Supplies</b>				
650 Supplies & Fees – Technology Related	823.54	823.55		1,647.09
<b>Total Supplies</b>	<b>\$823.54</b>	<b>\$823.55</b>		<b>\$1,647.09</b>
<b>Total 2211 Supervision of Educational Media Services – Head of Component</b>	<b>\$84,115.54</b>	<b>\$84,115.58</b>		<b>\$168,231.12</b>

**General Fund (10)**

	<u>Elementary</u>	<u>Secondary</u>	<u>Federal</u>	<u>Total</u>
<b>2220 Technology Support Services</b>				
<b>500 Other Purchased Services</b>				
520 Insurance – General	1,913.00	1,913.00		3,826.00
530 Communications	483.84	483.84		967.68
<b>Total Other Purchased Services</b>	<b>\$2,396.84</b>	<b>\$2,396.84</b>		<b>\$4,793.68</b>
<b>600 Supplies</b>				
650 Supplies & Fees – Technology Related	19,972.73	19,972.74		39,945.47
<b>Total Supplies</b>	<b>\$19,972.73</b>	<b>\$19,972.74</b>		<b>\$39,945.47</b>
<b>700 Property</b>				
768 Capitalized Technology Software - Replacement	3,213.97	3,213.98		6,427.95
<b>Total Property</b>	<b>\$3,213.97</b>	<b>\$3,213.98</b>		<b>\$6,427.95</b>
<b>Total 2220 Technology Support Services</b>	<b>\$25,583.54</b>	<b>\$25,583.56</b>		<b>\$51,167.10</b>

**General Fund (10)**

**2250 School Library Services**

**100 Personnel Services – Salaries**

	<u>Elementary</u>	<u>Secondary</u>	<u>Federal</u>	<u>Total</u>
100 Personnel Services – Salaries	75,406.00	18,594.21		94,000.21
<b>Total Personnel Services – Salaries</b>	<b>\$75,406.00</b>	<b>\$18,594.21</b>		<b>\$94,000.21</b>

**200 Personnel Services – Employee Benefits**

210 Group Insurance – Contracted Provider	111.52			111.52
220 Social Security Contributions	5,634.38	1,415.29		7,049.67
230 PSERS Retirement Contributions	20,398.26	5,168.72		25,566.98
260 Workers' Compensation	349.87	86.27		436.14
270 Group Insurance – Self-Insurance	16,143.76			16,143.76
<b>Total Personnel Services – Employee Benefits</b>	<b>\$42,637.79</b>	<b>\$6,670.28</b>		<b>\$49,308.07</b>

**300 Purchased Professional and Technical Services**

329 Professional Educational Services – Other	0.01			0.01
<b>Total Purchased Professional and Technical Services</b>	<b>\$0.01</b>			<b>\$0.01</b>

**600 Supplies**

610 General Supplies	256.34	196.57		452.91
640 Books and Periodicals	3,920.29	7,528.52		11,448.81
650 Supplies & Fees – Technology Related	273.27	273.28		546.55
<b>Total Supplies</b>	<b>\$4,449.90</b>	<b>\$7,998.37</b>		<b>\$12,448.27</b>

**700 Property**

752 Capital Equipment – Original and Additional			1,539.00	1,539.00
<b>Total Property</b>			<b>\$1,539.00</b>	<b>\$1,539.00</b>

**Total 2250 School Library Services**

	<b>\$122,493.70</b>	<b>\$33,262.86</b>	<b>\$1,539.00</b>	<b>\$157,295.56</b>
--	---------------------	--------------------	-------------------	---------------------



**General Fund (10)**

	<u>Elementary</u>	<u>Secondary</u>	<u>Federal</u>	<u>Total</u>
<b>2260 Instruction and Curriculum Development Services</b>				
<b>100 Personnel Services – Salaries</b>				
100 Personnel Services – Salaries	11,341.26	11,341.26		22,682.52
<b>Total Personnel Services – Salaries</b>	<b>\$11,341.26</b>	<b>\$11,341.26</b>		<b>\$22,682.52</b>
<b>200 Personnel Services – Employee Benefits</b>				
210 Group Insurance – Contracted Provider	16.71	16.72		33.43
220 Social Security Contributions	846.13	846.13		1,692.26
230 PSERS Retirement Contributions	3,117.85	3,117.86		6,235.71
260 Workers' Compensation	52.62	52.62		105.24
270 Group Insurance – Self-Insurance	8,934.69	8,934.69		17,869.38
<b>Total Personnel Services – Employee Benefits</b>	<b>\$12,968.00</b>	<b>\$12,968.02</b>		<b>\$25,936.02</b>
<b>300 Purchased Professional and Technical Services</b>				
310 Official / Administrative Services	272.50	272.50		545.00
<b>Total Purchased Professional and Technical Services</b>	<b>\$272.50</b>	<b>\$272.50</b>		<b>\$545.00</b>
<b>500 Other Purchased Services</b>				
530 Communications	874.56	874.57		1,749.13
580 Travel	286.37	286.38		572.75
<b>Total Other Purchased Services</b>	<b>\$1,160.93</b>	<b>\$1,160.95</b>		<b>\$2,321.88</b>
<b>600 Supplies</b>				
610 General Supplies	455.45	455.46		910.91
<b>Total Supplies</b>	<b>\$455.45</b>	<b>\$455.46</b>		<b>\$910.91</b>
<b>700 Property</b>				
758 Capitalized Technology Software - Original	2,038.62	2,038.62		4,077.24
<b>Total Property</b>	<b>\$2,038.62</b>	<b>\$2,038.62</b>		<b>\$4,077.24</b>
<b>800 Other Objects</b>				
810 Dues and Fees	297.50	297.50		595.00
<b>Total Other Objects</b>	<b>\$297.50</b>	<b>\$297.50</b>		<b>\$595.00</b>
<b>Total 2260 Instruction and Curriculum Development Services</b>	<b>\$28,534.26</b>	<b>\$28,534.31</b>		<b>\$57,068.57</b>

**General Fund (10)**

**2270 Instructional Staff Professional Development Services**

	<u>Elementary</u>	<u>Secondary</u>	<u>Federal</u>	<u>Total</u>
<b>100 Personnel Services – Salaries</b>				
100 Personnel Services – Salaries	27,094.37	27,094.37	103,634.35	157,823.09
<b>Total Personnel Services – Salaries</b>	<b>\$27,094.37</b>	<b>\$27,094.37</b>	<b>\$103,634.35</b>	<b>\$157,823.09</b>
<b>200 Personnel Services – Employee Benefits</b>				
210 Group Insurance – Contracted Provider	153.10	126.49	(34.56)	245.03
220 Social Security Contributions	4,558.65	2,557.64	3,238.59	10,354.88
230 PSERS Retirement Contributions	14,309.74	7,234.40	18,441.51	39,985.65
240 Tuition Reimbursement	795.13	220.00		1,015.13
260 Workers' Compensation	125.71	125.71		251.42
270 Group Insurance – Self-Insurance	9,051.88	5,147.72	13,692.70	27,892.30
<b>Total Personnel Services – Employee Benefits</b>	<b>\$28,994.21</b>	<b>\$15,411.96</b>	<b>\$35,338.24</b>	<b>\$79,744.41</b>
<b>300 Purchased Professional and Technical Services</b>				
310 Official / Administrative Services	4,506.30	4,511.30	919.55	9,937.15
322 Professional Educational Services – lus	600.00			600.00
324 Professional Educational Services – Employee Training and Development Services			17,272.61	17,272.61
<b>Total Purchased Professional and Technical Services</b>	<b>\$5,106.30</b>	<b>\$4,511.30</b>	<b>\$18,192.16</b>	<b>\$27,809.76</b>
<b>500 Other Purchased Services</b>				
580 Travel	69.66	69.66	5,836.38	5,975.70
<b>Total Other Purchased Services</b>	<b>\$69.66</b>	<b>\$69.66</b>	<b>\$5,836.38</b>	<b>\$5,975.70</b>
<b>600 Supplies</b>				
610 General Supplies	230.83	230.83	9,829.84	10,291.50
<b>Total Supplies</b>	<b>\$230.83</b>	<b>\$230.83</b>	<b>\$9,829.84</b>	<b>\$10,291.50</b>
<b>700 Property</b>				
752 Capital Equipment – Original and Additional			600.00	600.00
<b>Total Property</b>			<b>\$600.00</b>	<b>\$600.00</b>
<b>Total 2270 Instructional Staff Professional Development Services</b>	<b>\$61,495.37</b>	<b>\$47,318.12</b>	<b>\$173,430.97</b>	<b>\$282,244.46</b>

**General Fund (10)**

	<u>Elementary</u>	<u>Secondary</u>	<u>Federal</u>	<u>Total</u>
<b>2290 Other Instructional Staff Services</b>				
<b>100 Personnel Services – Salaries</b>				
100 Personnel Services – Salaries	12,267.06	16,214.02		28,481.08
<b>Total Personnel Services – Salaries</b>	<b>\$12,267.06</b>	<b>\$16,214.02</b>		<b>\$28,481.08</b>
<b>200 Personnel Services – Employee Benefits</b>				
220 Social Security Contributions	933.69	1,234.07		2,167.76
230 PSERS Retirement Contributions	3,409.96	270.46		3,680.42
260 Workers’ Compensation	56.92	75.23		132.15
<b>Total Personnel Services – Employee Benefits</b>	<b>\$4,400.57</b>	<b>\$1,579.76</b>		<b>\$5,980.33</b>
<b>300 Purchased Professional and Technical Services</b>				
310 Official / Administrative Services	522.00	522.00		1,044.00
<b>Total Purchased Professional and Technical Services</b>	<b>\$522.00</b>	<b>\$522.00</b>		<b>\$1,044.00</b>
<b>600 Supplies</b>				
650 Supplies & Fees – Technology Related	2,129.50	2,129.50		4,259.00
<b>Total Supplies</b>	<b>\$2,129.50</b>	<b>\$2,129.50</b>		<b>\$4,259.00</b>
<b>Total 2290 Other Instructional Staff Services</b>	<b>\$19,319.13</b>	<b>\$20,445.28</b>		<b>\$39,764.41</b>

**General Fund (10)**

	<u>Elementary</u>	<u>Secondary</u>	<u>Federal</u>	<u>Total</u>
<b>2300 Support Services – Administration</b>				
<b>100 Personnel Services – Salaries</b>				
100 Personnel Services – Salaries	142,020.41	149,293.63		499,052.47
<b>Total Personnel Services – Salaries</b>	<b>\$142,020.41</b>	<b>\$149,293.63</b>		<b>\$499,052.47</b>
<b>200 Personnel Services – Employee Benefits</b>				
210 Group Insurance – Contracted Provider	309.90	313.37		905.83
220 Social Security Contributions	10,571.96	11,089.90		37,277.46
230 PSERS Retirement Contributions	39,478.11	40,825.75		122,895.40
260 Workers' Compensation	658.95	692.69		2,315.49
270 Group Insurance – Self-Insurance	50,405.98	51,204.30		137,253.12
<b>Total Personnel Services – Employee Benefits</b>	<b>\$101,424.90</b>	<b>\$104,126.01</b>		<b>\$300,647.30</b>
<b>300 Purchased Professional and Technical Services</b>				
310 Official / Administrative Services				11,835.55
324 Professional Educational Services – Employee Training and Development Services	2,000.00			2,000.00
330 Other Professional Services				26,527.62
<b>Total Purchased Professional and Technical Services</b>	<b>\$2,000.00</b>			<b>\$40,363.17</b>
<b>500 Other Purchased Services</b>				
520 Insurance – General		123.75		371.25
530 Communications	4,141.11	7,578.13		15,948.67
549 Other Advertising/Public Relations				1,180.66
580 Travel	187.72			6,186.78
<b>Total Other Purchased Services</b>	<b>\$4,328.83</b>	<b>\$7,701.88</b>		<b>\$23,687.36</b>
<b>600 Supplies</b>				
610 General Supplies	3,581.64	8,021.02		15,224.80
630 Food	658.19	1,416.74		2,384.93
640 Books and Periodicals		320.40		320.40
650 Supplies & Fees – Technology Related	4,217.10	3,780.00		7,997.10
<b>Total Supplies</b>	<b>\$8,456.93</b>	<b>\$13,538.16</b>		<b>\$25,927.23</b>
<b>700 Property</b>				
758 Capitalized Technology Software - Original	1,279.13			1,279.13
<b>Total Property</b>	<b>\$1,279.13</b>			<b>\$1,279.13</b>
<b>800 Other Objects</b>				
810 Dues and Fees	347.55	115.87		16,923.26
820 Claims and Judgments Against the LEA				32,656.70
<b>Total Other Objects</b>	<b>\$347.55</b>	<b>\$115.87</b>		<b>\$49,579.96</b>
<b>Total 2300 Support Services – Administration</b>	<b>\$259,857.75</b>	<b>\$274,775.55</b>		<b>\$940,536.62</b>

General Fund (10)

	<u>Elementary</u>	<u>Secondary</u>	<u>Federal</u>	<u>Total</u>
<b>2310 Board Services</b>				
<b>100 Personnel Services – Salaries</b>				
100 Personnel Services – Salaries				2,600.00
<b>Total Personnel Services – Salaries</b>				<b>\$2,600.00</b>
<b>200 Personnel Services – Employee Benefits</b>				
220 Social Security Contributions				194.26
230 PSERS Retirement Contributions				722.78
260 Workers’ Compensation				12.06
<b>Total Personnel Services – Employee Benefits</b>				<b>\$929.10</b>
<b>300 Purchased Professional and Technical Services</b>				
310 Official / Administrative Services				784.00
<b>Total Purchased Professional and Technical Services</b>				<b>\$784.00</b>
<b>500 Other Purchased Services</b>				
530 Communications				382.30
549 Other Advertising/Public Relations				1,180.66
<b>Total Other Purchased Services</b>				<b>\$1,562.96</b>
<b>600 Supplies</b>				
610 General Supplies				2,320.78
630 Food				310.00
<b>Total Supplies</b>				<b>\$2,630.78</b>
<b>800 Other Objects</b>				
810 Dues and Fees				12,834.84
820 Claims and Judgments Against the LEA				32,656.70
<b>Total Other Objects</b>				<b>\$45,491.54</b>
<b>Total 2310 Board Services</b>				<b>\$53,998.38</b>

General Fund (10)

2320 Board Treasurer Services

Elementary

Secondary

Federal

Total

500 Other Purchased Services

520 Insurance - General

123.75

**Total Other Purchased Services**

**\$123.75**

**Total 2320 Board Treasurer Services**

**\$123.75**

**General Fund (10)**

	<u>Elementary</u>	<u>Secondary</u>	<u>Federal</u>	<u>Total</u>
<b>2330 Tax Assessment and Collection Services</b>				
<b>100 Personnel Services – Salaries</b>				
100 Personnel Services – Salaries				53,574.87
<b>Total Personnel Services – Salaries</b>				<b>\$53,574.87</b>
<b>200 Personnel Services – Employee Benefits</b>				
220 Social Security Contributions				4,077.90
260 Workers’ Compensation				248.57
<b>Total Personnel Services – Employee Benefits</b>				<b>\$4,326.47</b>
<b>300 Purchased Professional and Technical Services</b>				
310 Official / Administrative Services				11,051.55
<b>Total Purchased Professional and Technical Services</b>				<b>\$11,051.55</b>
<b>500 Other Purchased Services</b>				
530 Communications				3,847.13
<b>Total Other Purchased Services</b>				<b>\$3,847.13</b>
<b>600 Supplies</b>				
610 General Supplies				474.12
<b>Total Supplies</b>				<b>\$474.12</b>
<b>Total 2330 Tax Assessment and Collection Services</b>				<b>\$73,274.14</b>

General Fund (10)

2350 Legal and Accounting Services

Elementary

Secondary

Federal

Total

300 Purchased Professional and Technical Services

330 Other Professional Services

26,527.62

**Total Purchased Professional and Technical Services**

**\$26,527.62**

**Total 2350 Legal and Accounting Services**

**\$26,527.62**



**General Fund (10)**

**2360 Office of the Superintendent / Executive Director Services**

	<u>Elementary</u>	<u>Secondary</u>	<u>Federal</u>	<u>Total</u>
<b>100 Personnel Services – Salaries</b>				
100 Personnel Services – Salaries				151,563.56
<b>Total Personnel Services – Salaries</b>				<b>\$151,563.56</b>
<b>200 Personnel Services – Employee Benefits</b>				
210 Group Insurance – Contracted Provider				282.56
220 Social Security Contributions				11,343.44
230 PSERS Retirement Contributions				41,868.76
260 Workers' Compensation				703.22
270 Group Insurance – Self-Insurance				35,642.84
<b>Total Personnel Services – Employee Benefits</b>				<b>\$89,840.82</b>
<b>500 Other Purchased Services</b>				
520 Insurance – General				123.75
530 Communications	864.43	864.43		1,728.86
580 Travel				5,999.06
<b>Total Other Purchased Services</b>	<b>\$864.43</b>	<b>\$864.43</b>		<b>\$7,851.67</b>
<b>600 Supplies</b>				
610 General Supplies				827.24
<b>Total Supplies</b>				<b>\$827.24</b>
<b>800 Other Objects</b>				
810 Dues and Fees				3,625.00
<b>Total Other Objects</b>				<b>\$3,625.00</b>
<b>Total 2360 Office of the Superintendent / Executive Director Services</b>	<b>\$864.43</b>	<b>\$864.43</b>		<b>\$253,708.29</b>

**General Fund (10)**

**2380 Office of the Principal Services**

**100 Personnel Services – Salaries**

	<u>Elementary</u>	<u>Secondary</u>	<u>Federal</u>	<u>Total</u>
100 Personnel Services – Salaries	142,020.41	149,293.63		291,314.04
<b>Total Personnel Services – Salaries</b>	<b>\$142,020.41</b>	<b>\$149,293.63</b>		<b>\$291,314.04</b>

**200 Personnel Services – Employee Benefits**

210 Group Insurance – Contracted Provider	309.90	313.37		623.27
220 Social Security Contributions	10,571.96	11,089.90		21,661.86
230 PSERS Retirement Contributions	39,478.11	40,825.75		80,303.86
260 Workers' Compensation	658.95	692.69		1,351.64
270 Group Insurance – Self-Insurance	50,405.98	51,204.30		101,610.28
<b>Total Personnel Services – Employee Benefits</b>	<b>\$101,424.90</b>	<b>\$104,126.01</b>		<b>\$205,550.91</b>

**300 Purchased Professional and Technical Services**

324 Professional Educational Services – Employee Training and Development Services	2,000.00			2,000.00
<b>Total Purchased Professional and Technical Services</b>	<b>\$2,000.00</b>			<b>\$2,000.00</b>

**500 Other Purchased Services**

520 Insurance – General		123.75		123.75
530 Communications	3,276.68	6,713.70		9,990.38
580 Travel	187.72			187.72
<b>Total Other Purchased Services</b>	<b>\$3,464.40</b>	<b>\$6,837.45</b>		<b>\$10,301.85</b>

**600 Supplies**

610 General Supplies	3,581.64	8,021.02		11,602.66
630 Food	658.19	1,416.74		2,074.93
640 Books and Periodicals		320.40		320.40
650 Supplies & Fees – Technology Related	4,217.10	3,780.00		7,997.10
<b>Total Supplies</b>	<b>\$8,456.93</b>	<b>\$13,538.16</b>		<b>\$21,995.09</b>

**700 Property**

758 Capitalized Technology Software - Original	1,279.13			1,279.13
<b>Total Property</b>	<b>\$1,279.13</b>			<b>\$1,279.13</b>

**800 Other Objects**

810 Dues and Fees	347.55	115.87		463.42
<b>Total Other Objects</b>	<b>\$347.55</b>	<b>\$115.87</b>		<b>\$463.42</b>

**Total 2380 Office of the Principal Services**

	<b>\$258,993.32</b>	<b>\$273,911.12</b>		<b>\$532,904.44</b>
--	---------------------	---------------------	--	---------------------

**General Fund (10)**

	<u>Elementary</u>	<u>Secondary</u>	<u>Federal</u>	<u>Total</u>
<b>2400 Support Services – Pupil Health</b>				
<b>100 Personnel Services – Salaries</b>				
100 Personnel Services – Salaries				69,214.31
<b>Total Personnel Services – Salaries</b>				<b>\$69,214.31</b>
<b>200 Personnel Services – Employee Benefits</b>				
210 Group Insurance – Contracted Provider				121.67
220 Social Security Contributions				5,201.55
230 PSERS Retirement Contributions				15,515.38
260 Workers' Compensation				321.14
270 Group Insurance – Self-Insurance				441.02
<b>Total Personnel Services – Employee Benefits</b>				<b>\$21,600.76</b>
<b>300 Purchased Professional and Technical Services</b>				
310 Official / Administrative Services				493.50
322 Professional Educational Services – Ius				25.00
330 Other Professional Services				53,898.35
<b>Total Purchased Professional and Technical Services</b>				<b>\$54,416.85</b>
<b>500 Other Purchased Services</b>				
530 Communications				1,243.16
580 Travel				11.24
<b>Total Other Purchased Services</b>				<b>\$1,254.40</b>
<b>600 Supplies</b>				
610 General Supplies				4,333.30
<b>Total Supplies</b>				<b>\$4,333.30</b>
<b>700 Property</b>				
762 Capitalized Equipment - Replacement				3,055.00
<b>Total Property</b>				<b>\$3,055.00</b>
<b>Total 2400 Support Services – Pupil Health</b>				<b>\$153,874.62</b>

General Fund (10)

2420 Medical Services

Elementary

Secondary

Federal

Total

300 Purchased Professional and Technical Services

322 Professional Educational Services – Ius

25.00

330 Other Professional Services

52,698.35

**Total Purchased Professional and Technical Services**

**\$52,723.35**

600 Supplies

610 General Supplies

281.12

**Total Supplies**

**\$281.12**

**Total 2420 Medical Services**

**\$53,004.47**

General Fund (10)

2430 Dental Services

Elementary

Secondary

Federal

Total

300 Purchased Professional and Technical Services

330 Other Professional Services

1,200.00

**Total Purchased Professional and Technical Services**

**\$1,200.00**

**Total 2430 Dental Services**

**\$1,200.00**

**General Fund (10)**

**2440 Nursing Services**

	<u>Elementary</u>	<u>Secondary</u>	<u>Federal</u>	<u>Total</u>
<b>100 Personnel Services – Salaries</b>				
100 Personnel Services – Salaries				69,214.31
<b>Total Personnel Services – Salaries</b>				<b>\$69,214.31</b>
<b>200 Personnel Services – Employee Benefits</b>				
210 Group Insurance – Contracted Provider				121.67
220 Social Security Contributions				5,201.55
230 PSERS Retirement Contributions				15,515.38
260 Workers' Compensation				321.14
270 Group Insurance – Self-Insurance				441.02
<b>Total Personnel Services – Employee Benefits</b>				<b>\$21,600.76</b>
<b>300 Purchased Professional and Technical Services</b>				
310 Official / Administrative Services				493.50
<b>Total Purchased Professional and Technical Services</b>				<b>\$493.50</b>
<b>500 Other Purchased Services</b>				
530 Communications				1,243.16
580 Travel				11.24
<b>Total Other Purchased Services</b>				<b>\$1,254.40</b>
<b>600 Supplies</b>				
610 General Supplies				4,052.18
<b>Total Supplies</b>				<b>\$4,052.18</b>
<b>700 Property</b>				
762 Capitalized Equipment - Replacement				3,055.00
<b>Total Property</b>				<b>\$3,055.00</b>
<b>Total 2440 Nursing Services</b>				<b>\$99,670.15</b>

**General Fund (10)**

	<u>Elementary</u>	<u>Secondary</u>	<u>Federal</u>	<u>Total</u>
<b>2500 Support Services – Business</b>				
<b>100 Personnel Services – Salaries</b>				
100 Personnel Services – Salaries				140,822.60
<b>Total Personnel Services – Salaries</b>				<b>\$140,822.60</b>
<b>200 Personnel Services – Employee Benefits</b>				
210 Group Insurance – Contracted Provider				256.79
220 Social Security Contributions				10,454.29
230 PSERS Retirement Contributions				39,145.35
260 Workers' Compensation				653.39
270 Group Insurance – Self-Insurance				65,979.33
<b>Total Personnel Services – Employee Benefits</b>				<b>\$116,489.15</b>
<b>300 Purchased Professional and Technical Services</b>				
310 Official / Administrative Services				6,072.54
<b>Total Purchased Professional and Technical Services</b>				<b>\$6,072.54</b>
<b>500 Other Purchased Services</b>				
520 Insurance – General				247.50
530 Communications				2,579.73
580 Travel				874.62
<b>Total Other Purchased Services</b>				<b>\$3,701.85</b>
<b>600 Supplies</b>				
610 General Supplies				425.22
650 Supplies & Fees – Technology Related				3,600.00
<b>Total Supplies</b>				<b>\$4,025.22</b>
<b>700 Property</b>				
752 Capital Equipment – Original and Additional				936.65
<b>Total Property</b>				<b>\$936.65</b>
<b>800 Other Objects</b>				
810 Dues and Fees				500.05
<b>Total Other Objects</b>				<b>\$500.05</b>
<b>Total 2500 Support Services – Business</b>				<b>\$272,548.06</b>

**General Fund (10)**

	<u>Elementary</u>	<u>Secondary</u>	<u>Federal</u>	<u>Total</u>
<b>2510 Fiscal Services</b>				
<b>100 Personnel Services – Salaries</b>				
100 Personnel Services – Salaries				104,508.00
<b>Total Personnel Services – Salaries</b>				<b>\$104,508.00</b>
<b>200 Personnel Services – Employee Benefits</b>				
210 Group Insurance – Contracted Provider				206.64
220 Social Security Contributions				7,801.11
230 PSERS Retirement Contributions				29,050.80
260 Workers' Compensation				484.90
270 Group Insurance – Self-Insurance				39,476.54
<b>Total Personnel Services – Employee Benefits</b>				<b>\$77,019.99</b>
<b>300 Purchased Professional and Technical Services</b>				
310 Official / Administrative Services				6,072.54
<b>Total Purchased Professional and Technical Services</b>				<b>\$6,072.54</b>
<b>500 Other Purchased Services</b>				
520 Insurance – General				247.50
530 Communications				2,579.73
580 Travel				874.62
<b>Total Other Purchased Services</b>				<b>\$3,701.85</b>
<b>600 Supplies</b>				
610 General Supplies				323.99
650 Supplies & Fees – Technology Related				1,800.00
<b>Total Supplies</b>				<b>\$2,123.99</b>
<b>700 Property</b>				
752 Capital Equipment – Original and Additional				936.65
<b>Total Property</b>				<b>\$936.65</b>
<b>800 Other Objects</b>				
810 Dues and Fees				500.05
<b>Total Other Objects</b>				<b>\$500.05</b>
<b>Total 2510 Fiscal Services</b>				<b>\$194,863.07</b>



**General Fund (10)**

	<u>Elementary</u>	<u>Secondary</u>	<u>Federal</u>	<u>Total</u>
<b>2511 Supervision of Fiscal Services - Head of Component</b>				
<b>100 Personnel Services – Salaries</b>				
100 Personnel Services – Salaries				70,888.00
<b>Total Personnel Services – Salaries</b>				<b>\$70,888.00</b>
<b>200 Personnel Services – Employee Benefits</b>				
210 Group Insurance – Contracted Provider				173.21
220 Social Security Contributions				5,292.28
230 PSERS Retirement Contributions				19,705.28
260 Workers' Compensation				328.91
270 Group Insurance – Self-Insurance				19,005.36
<b>Total Personnel Services – Employee Benefits</b>				<b>\$44,505.04</b>
<b>300 Purchased Professional and Technical Services</b>				
310 Official / Administrative Services				6,072.54
<b>Total Purchased Professional and Technical Services</b>				<b>\$6,072.54</b>
<b>500 Other Purchased Services</b>				
520 Insurance – General				247.50
530 Communications				2,579.73
580 Travel				874.62
<b>Total Other Purchased Services</b>				<b>\$3,701.85</b>
<b>600 Supplies</b>				
610 General Supplies				323.99
<b>Total Supplies</b>				<b>\$323.99</b>
<b>700 Property</b>				
752 Capital Equipment – Original and Additional				936.65
<b>Total Property</b>				<b>\$936.65</b>
<b>800 Other Objects</b>				
810 Dues and Fees				500.05
<b>Total Other Objects</b>				<b>\$500.05</b>
<b>Total 2511 Supervision of Fiscal Services - Head of Component</b>				<b>\$126,928.12</b>

General Fund (10)

2514 Payroll Services

Elementary

Secondary

Federal

Total

100 Personnel Services – Salaries

100 Personnel Services – Salaries

33,620.00

**Total Personnel Services – Salaries**

**\$33,620.00**

200 Personnel Services – Employee Benefits

210 Group Insurance – Contracted Provider

33.43

220 Social Security Contributions

2,508.83

230 PSERS Retirement Contributions

9,345.52

260 Workers' Compensation

155.99

270 Group Insurance – Self-Insurance

20,469.08

**Total Personnel Services – Employee Benefits**

**\$32,512.85**

600 Supplies

650 Supplies & Fees – Technology Related

1,800.00

**Total Supplies**

**\$1,800.00**

**Total 2514 Payroll Services**

**\$67,932.85**

General Fund (10)

2515 Financial Accounting Services

Elementary

Secondary

Federal

Total

200 Personnel Services – Employee Benefits

270 Group Insurance – Self-Insurance

2.10

**Total Personnel Services – Employee Benefits**

**\$2.10**

**Total 2515 Financial Accounting Services**

**\$2.10**

General Fund (10)

2520 Purchasing Services

Elementary

Secondary

Federal

Total

100 Personnel Services – Salaries

100 Personnel Services – Salaries

36,314.60

**Total Personnel Services – Salaries**

**\$36,314.60**

200 Personnel Services – Employee Benefits

210 Group Insurance – Contracted Provider

50.15

220 Social Security Contributions

2,653.18

230 PSERS Retirement Contributions

10,094.55

260 Workers' Compensation

168.49

270 Group Insurance – Self-Insurance

26,502.79

**Total Personnel Services – Employee Benefits**

**\$39,469.16**

600 Supplies

610 General Supplies

101.23

650 Supplies & Fees – Technology Related

1,800.00

**Total Supplies**

**\$1,901.23**

**Total 2520 Purchasing Services**

**\$77,684.99**

**General Fund (10)**

	<u>Elementary</u>	<u>Secondary</u>	<u>Federal</u>	<u>Total</u>
<b>2600 Operation and Maintenance of Plant Services</b>				
<b>100 Personnel Services – Salaries</b>				
100 Personnel Services – Salaries				434,209.63
<b>Total Personnel Services – Salaries</b>				<b>\$434,209.63</b>
<b>200 Personnel Services – Employee Benefits</b>				
210 Group Insurance – Contracted Provider				506.28
220 Social Security Contributions				32,437.62
230 PSERS Retirement Contributions				120,630.28
260 Workers' Compensation				2,014.65
270 Group Insurance – Self-Insurance				220,867.48
<b>Total Personnel Services – Employee Benefits</b>				<b>\$376,456.31</b>
<b>300 Purchased Professional and Technical Services</b>				
310 Official / Administrative Services				23,747.32
324 Professional Educational Services – Employee Training and Development Services				1,025.00
329 Professional Educational Services – Other				12,392.20
330 Other Professional Services				4,505.00
350 Security / Safety Services				9,966.68
<b>Total Purchased Professional and Technical Services</b>				<b>\$51,636.20</b>
<b>400 Purchased Property Services</b>				
410 Cleaning Services				37,243.30
420 Utility Services				123,646.37
430 Repairs and Maintenance Services				71,211.67
440 Rentals				92.15
490 Other Purchased Property Services				557.98
<b>Total Purchased Property Services</b>				<b>\$232,751.47</b>
<b>500 Other Purchased Services</b>				
522 Automotive Liability Insurance				5,087.00
523 General Property and Liability Insurance				55,046.00
530 Communications				993.12
<b>Total Other Purchased Services</b>				<b>\$61,126.12</b>
<b>600 Supplies</b>				
610 General Supplies	32,262.04	31,853.87		64,115.91
620 Energy				195,199.42
630 Food				29.26
<b>Total Supplies</b>	<b>\$32,262.04</b>	<b>\$31,853.87</b>		<b>\$259,344.59</b>
<b>700 Property</b>				
752 Capital Equipment – Original and Additional				38,826.97
762 Capitalized Equipment - Replacement				923.51
<b>Total Property</b>				<b>\$39,750.48</b>
<b>800 Other Objects</b>				
810 Dues and Fees				1,072.55
<b>Total Other Objects</b>				<b>\$1,072.55</b>
<b>Total 2600 Operation and Maintenance of Plant Services</b>	<b>\$32,262.04</b>	<b>\$31,853.87</b>		<b>\$1,456,347.35</b>

General Fund (10)

2610 Supervision of Operation and Maintenance of Plant Services

Elementary

Secondary

Federal

Total

100 Personnel Services – Salaries

100 Personnel Services – Salaries

48,517.00

**Total Personnel Services – Salaries**

**\$48,517.00**

200 Personnel Services – Employee Benefits

210 Group Insurance – Contracted Provider

144.09

220 Social Security Contributions

3,587.76

230 PSERS Retirement Contributions

13,486.54

260 Workers' Compensation

225.11

270 Group Insurance – Self-Insurance

18,014.44

**Total Personnel Services – Employee Benefits**

**\$35,457.94**

800 Other Objects

810 Dues and Fees

131.00

**Total Other Objects**

**\$131.00**

**Total 2610 Supervision of Operation and Maintenance of Plant Services**

**\$84,105.94**

General Fund (10)

	<u>Elementary</u>	<u>Secondary</u>	<u>Federal</u>	<u>Total</u>
<b>2611 Supervision of Operation and Maintenance of Plant Services – Head of Component</b>				
<b>100 Personnel Services – Salaries</b>				
100 Personnel Services – Salaries				48,517.00
<b>Total Personnel Services – Salaries</b>				<b>\$48,517.00</b>
<b>200 Personnel Services – Employee Benefits</b>				
210 Group Insurance – Contracted Provider				144.09
220 Social Security Contributions				3,587.76
230 PSERS Retirement Contributions				13,486.54
260 Workers' Compensation				225.11
270 Group Insurance – Self-Insurance				18,014.44
<b>Total Personnel Services – Employee Benefits</b>				<b>\$35,457.94</b>
<b>800 Other Objects</b>				
810 Dues and Fees				131.00
<b>Total Other Objects</b>				<b>\$131.00</b>
<b>Total 2611 Supervision of Operation and Maintenance of Plant Services – Head of Component</b>				<b>\$84,105.94</b>

**General Fund (10)**

**2620 Operation of Buildings Services**

**100 Personnel Services – Salaries**

	<u>Elementary</u>	<u>Secondary</u>	<u>Federal</u>	<u>Total</u>
100 Personnel Services – Salaries				347,642.26
<b>Total Personnel Services – Salaries</b>				<b>\$347,642.26</b>
<b>200 Personnel Services – Employee Benefits</b>				
210 Group Insurance – Contracted Provider				328.76
220 Social Security Contributions				26,014.50
230 PSERS Retirement Contributions				96,636.19
260 Workers' Compensation				1,612.99
270 Group Insurance – Self-Insurance				180,654.57
<b>Total Personnel Services – Employee Benefits</b>				<b>\$305,247.01</b>
<b>300 Purchased Professional and Technical Services</b>				
310 Official / Administrative Services				17,617.74
324 Professional Educational Services – Employee Training and Development Services				1,025.00
329 Professional Educational Services – Other				12,392.20
330 Other Professional Services				4,505.00
350 Security / Safety Services				9,966.68
<b>Total Purchased Professional and Technical Services</b>				<b>\$45,506.62</b>
<b>400 Purchased Property Services</b>				
410 Cleaning Services				37,243.30
420 Utility Services				123,646.37
430 Repairs and Maintenance Services				63,205.01
440 Rentals				92.15
490 Other Purchased Property Services				557.98
<b>Total Purchased Property Services</b>				<b>\$224,744.81</b>
<b>500 Other Purchased Services</b>				
523 General Property and Liability Insurance				55,046.00
530 Communications				993.12
<b>Total Other Purchased Services</b>				<b>\$56,039.12</b>
<b>600 Supplies</b>				
610 General Supplies	28,918.68	29,780.37		58,699.05
620 Energy				193,286.57
<b>Total Supplies</b>	<b>\$28,918.68</b>	<b>\$29,780.37</b>		<b>\$251,985.62</b>
<b>700 Property</b>				
752 Capital Equipment – Original and Additional				6,171.50
762 Capitalized Equipment - Replacement				923.51
<b>Total Property</b>				<b>\$7,095.01</b>
<b>800 Other Objects</b>				
810 Dues and Fees				941.55
<b>Total Other Objects</b>				<b>\$941.55</b>
<b>Total 2620 Operation of Buildings Services</b>	<b>\$28,918.68</b>	<b>\$29,780.37</b>		<b>\$1,239,202.00</b>



**General Fund (10)**

	<u>Elementary</u>	<u>Secondary</u>	<u>Federal</u>	<u>Total</u>
<b>2630 Care and Upkeep of Grounds Services</b>				
<b>100 Personnel Services – Salaries</b>				
100 Personnel Services – Salaries				38,050.37
<b>Total Personnel Services – Salaries</b>				<b>\$38,050.37</b>
<b>200 Personnel Services – Employee Benefits</b>				
210 Group Insurance – Contracted Provider				33.43
220 Social Security Contributions				2,835.36
230 PSERS Retirement Contributions				10,507.55
260 Workers' Compensation				176.55
270 Group Insurance – Self-Insurance				22,198.47
<b>Total Personnel Services – Employee Benefits</b>				<b>\$35,751.36</b>
<b>300 Purchased Professional and Technical Services</b>				
310 Official / Administrative Services				6,129.58
<b>Total Purchased Professional and Technical Services</b>				<b>\$6,129.58</b>
<b>400 Purchased Property Services</b>				
430 Repairs and Maintenance Services				1,257.67
<b>Total Purchased Property Services</b>				<b>\$1,257.67</b>
<b>600 Supplies</b>				
610 General Supplies	1,615.26	345.40		1,960.66
620 Energy				832.15
<b>Total Supplies</b>	<b>\$1,615.26</b>	<b>\$345.40</b>		<b>\$2,792.81</b>
<b>Total 2630 Care and Upkeep of Grounds Services</b>	<b>\$1,615.26</b>	<b>\$345.40</b>		<b>\$83,981.79</b>

General Fund (10)

	<u>Elementary</u>	<u>Secondary</u>	<u>Federal</u>	<u>Total</u>
<b>2640 Care and Upkeep of Equipment Services</b>				
<b>400 Purchased Property Services</b>				
430 Repairs and Maintenance Services				214.74
<b>Total Purchased Property Services</b>				<b>\$214.74</b>
<b>600 Supplies</b>				
610 General Supplies	835.67	835.67		1,671.34
620 Energy				1,024.41
<b>Total Supplies</b>	<b>\$835.67</b>	<b>\$835.67</b>		<b>\$2,695.75</b>
<b>Total 2640 Care and Upkeep of Equipment Services</b>	<b>\$835.67</b>	<b>\$835.67</b>		<b>\$2,910.49</b>

**General Fund (10)**

	<u>Elementary</u>	<u>Secondary</u>	<u>Federal</u>	<u>Total</u>
<b>2650 Vehicle Operation and Maintenance Services (Other Than Student Transportation Vehicles)</b>				
<b>400 <u>Purchased Property Services</u></b>				
430 Repairs and Maintenance Services				6,534.25
<b>Total Purchased Property Services</b>				<b>\$6,534.25</b>
<b>500 <u>Other Purchased Services</u></b>				
522 Automotive Liability Insurance				5,087.00
<b>Total Other Purchased Services</b>				<b>\$5,087.00</b>
<b>600 <u>Supplies</u></b>				
610 General Supplies	87.50	87.50		175.00
620 Energy				56.29
<b>Total Supplies</b>	<b>\$87.50</b>	<b>\$87.50</b>		<b>\$231.29</b>
<b>Total 2650 Vehicle Operation and Maintenance Services (Other Than Student Transportation Vehicles)</b>	<b>\$87.50</b>	<b>\$87.50</b>		<b>\$11,852.54</b>

General Fund (10)

2660 Safety and Security Services

600 Supplies

610 General Supplies

630 Food

**Total Supplies**

700 Property

752 Capital Equipment – Original and Additional

**Total Property**

**Total 2660 Safety and Security Services**

Elementary

Secondary

Federal

Total

804.93

804.93

1,609.86

29.26

**\$804.93**

**\$804.93**

**\$1,639.12**

32,655.47

**\$32,655.47**

**\$804.93**

**\$804.93**

**\$34,294.59**

General Fund (10)

	<u>Elementary</u>	<u>Secondary</u>	<u>Federal</u>	<u>Total</u>
<b>2700 Student Transportation Services</b>				
<b>500 Other Purchased Services</b>				
513 Contracted Carriers				913,368.21
516 Student Transportation Services From the IU				5,894.64
<b>Total Other Purchased Services</b>				<b>\$919,262.85</b>
<b>600 Supplies</b>				
650 Supplies & Fees – Technology Related				2,800.00
<b>Total Supplies</b>				<b>\$2,800.00</b>
<b>Total 2700 Student Transportation Services</b>				<b>\$922,062.85</b>

General Fund (10)

2710 Supervision of Student Transportation Services

Elementary

Secondary

Federal

Total

600 Supplies

650 Supplies & Fees – Technology Related

2,800.00

**Total Supplies**

**\$2,800.00**

**Total 2710 Supervision of Student Transportation Services**

**\$2,800.00**

General Fund (10)

2711 Supervision of Student Transportation Services – Head of Component

Elementary

Secondary

Federal

Total

600 Supplies

650 Supplies & Fees – Technology Related

2,800.00

<b>Total Supplies</b>				<b>\$2,800.00</b>
<b>Total 2711 Supervision of Student Transportation Services – Head of Component</b>				<b>\$2,800.00</b>

LEA : 110179003 West Branch Area SD

Printed 11/2/2017 11:15:10 AM

General Fund (10)

2720 Vehicle Operation Services

Elementary

Secondary

Federal

Total

500 Other Purchased Services

513 Contracted Carriers

864,690.21

516 Student Transportation Services From the IU

5,894.64

**Total Other Purchased Services**

**\$870,584.85**

**Total 2720 Vehicle Operation Services**

**\$870,584.85**



General Fund (10)

2750 Nonpublic Transportation

Elementary

Secondary

Federal

Total

500 Other Purchased Services

513 Contracted Carriers

48,678.00

**Total Other Purchased Services**

**\$48,678.00**

**Total 2750 Nonpublic Transportation**

**\$48,678.00**

General Fund (10)

2800 Support Services – Central

Elementary

Secondary

Federal

Total

500 Other Purchased Services

549 Other Advertising/Public Relations

1,363.68

**Total Other Purchased Services**

**\$1,363.68**

800 Other Objects

890 Miscellaneous Expenditures

50.00

**Total Other Objects**

**\$50.00**

**Total 2800 Support Services – Central**

**\$1,413.68**

LEA : 110179003 West Branch Area SD

Printed 11/2/2017 11:15:10 AM

General Fund (10)

2830 Staff Services

Elementary

Secondary

Federal

Total

500 Other Purchased Services

549 Other Advertising/Public Relations

1,363.68

**Total Other Purchased Services**

**\$1,363.68**

800 Other Objects

890 Miscellaneous Expenditures

50.00

**Total Other Objects**

**\$50.00**

**Total 2830 Staff Services**

**\$1,413.68**

General Fund (10)

2832 Recruitment and Placement Services

Elementary

Secondary

Federal

Total

500 Other Purchased Services

549 Other Advertising/Public Relations

1,363.68

**Total Other Purchased Services**

**\$1,363.68**

800 Other Objects

890 Miscellaneous Expenditures

50.00

**Total Other Objects**

**\$50.00**

**Total 2832 Recruitment and Placement Services**

**\$1,413.68**

General Fund (10)

<b>3000 Operation of Non-Instructional Services</b>	<b><u>Total</u></b>
<b>100 Personnel Services – Salaries</b>	
100 Personnel Services – Salaries	171,657.69
<b>Total Personnel Services – Salaries</b>	<b>\$171,657.69</b>
<b>200 Personnel Services – Employee Benefits</b>	
210 Group Insurance – Contracted Provider	114.58
220 Social Security Contributions	12,937.98
230 PSERS Retirement Contributions	39,575.80
250 Unemployment Compensation	320.28
260 Workers’ Compensation	796.49
270 Group Insurance – Self-Insurance	8,068.23
<b>Total Personnel Services – Employee Benefits</b>	<b>\$61,813.36</b>
<b>300 Purchased Professional and Technical Services</b>	
310 Official / Administrative Services	26.18
350 Security / Safety Services	500.00
390 Other Purchased Professional and Technical Services	18,875.00
<b>Total Purchased Professional and Technical Services</b>	<b>\$19,401.18</b>
<b>400 Purchased Property Services</b>	
410 Cleaning Services	940.00
420 Utility Services	3,761.37
430 Repairs and Maintenance Services	5,267.32
<b>Total Purchased Property Services</b>	<b>\$9,968.69</b>
<b>500 Other Purchased Services</b>	
510 Student Transportation Services	33,673.57
530 Communications	1,909.02
580 Travel	5,493.58
<b>Total Other Purchased Services</b>	<b>\$41,076.17</b>
<b>600 Supplies</b>	
610 General Supplies	23,945.67
620 Energy	946.48
630 Food	1,842.23
640 Books and Periodicals	918.00
<b>Total Supplies</b>	<b>\$27,652.38</b>
<b>700 Property</b>	
752 Capital Equipment – Original and Additional	21,646.81
762 Capitalized Equipment - Replacement	4,400.95
<b>Total Property</b>	<b>\$26,047.76</b>
<b>800 Other Objects</b>	
810 Dues and Fees	13,642.67
890 Miscellaneous Expenditures	207.21
<b>Total Other Objects</b>	<b>\$13,849.88</b>
<b>Total 3000 Operation of Non-Instructional Services</b>	<b>\$371,467.11</b>

General Fund (10)

3200 Student Activities

Elementary

Secondary

Federal

Total

100 Personnel Services – Salaries

100 Personnel Services – Salaries

171,657.69

**Total Personnel Services – Salaries**

**\$171,657.69**

200 Personnel Services – Employee Benefits

210 Group Insurance – Contracted Provider

114.58

220 Social Security Contributions

12,937.98

230 PSERS Retirement Contributions

39,575.80

250 Unemployment Compensation

320.28

260 Workers' Compensation

796.49

270 Group Insurance – Self-Insurance

8,068.23

**Total Personnel Services – Employee Benefits**

**\$61,813.36**

300 Purchased Professional and Technical Services

310 Official / Administrative Services

26.18

350 Security / Safety Services

500.00

390 Other Purchased Professional and Technical Services

18,875.00

**Total Purchased Professional and Technical Services**

**\$19,401.18**

400 Purchased Property Services

410 Cleaning Services

940.00

420 Utility Services

3,761.37

430 Repairs and Maintenance Services

5,267.32

**Total Purchased Property Services**

**\$9,968.69**

500 Other Purchased Services

510 Student Transportation Services

33,673.57

530 Communications

1,909.02

580 Travel

5,493.58

**Total Other Purchased Services**

**\$41,076.17**

600 Supplies

610 General Supplies

23,945.67

620 Energy

946.48

630 Food

1,842.23

640 Books and Periodicals

918.00

**Total Supplies**

**\$27,652.38**

700 Property

752 Capital Equipment – Original and Additional

21,646.81

762 Capitalized Equipment - Replacement

4,400.95

**Total Property**

**\$26,047.76**

800 Other Objects

810 Dues and Fees

13,642.67

890 Miscellaneous Expenditures

207.21

**Total Other Objects**

**\$13,849.88**

**Total 3200 Student Activities**

**\$371,467.11**

**General Fund (10)**

**4000 Facilities Acquisition, Construction and Improvement Services**

**Total**

**300 Purchased Professional and Technical Services**

330 Other Professional Services 1,781.37

**Total Purchased Professional and Technical Services \$1,781.37**

**400 Purchased Property Services**

430 Repairs and Maintenance Services 35,546.69

450 Construction Services 292,183.84

**Total Purchased Property Services \$327,730.53**

**700 Property**

752 Capital Equipment – Original and Additional 39,564.28

**Total Property \$39,564.28**

**Total 4000 Facilities Acquisition, Construction and Improvement Services \$369,076.18**

General Fund (10)

4300 Architecture and Engineering Services / Educational Specifications Development – Original and Additional	<u>Elementary</u>	<u>Secondary</u>	<u>Federal</u>	<u>Total</u>
300 <u>Purchased Professional and Technical Services</u>				
330 Other Professional Services				1,781.37
<b>Total Purchased Professional and Technical Services</b>				<b>\$1,781.37</b>
<b>Total 4300 Architecture and Engineering Services / Educational Specifications Development – Original and Additional</b>				<b>\$1,781.37</b>



LEA : 110179003 West Branch Area SD

Printed 11/2/2017 11:15:14 AM

General Fund (10)

	<u>Elementary</u>	<u>Secondary</u>	<u>Federal</u>	<u>Total</u>
<b>4500 Building Acquisition and Construction Services – Original and Additional</b>				
<b>400 <u>Purchased Property Services</u></b>				
430 Repairs and Maintenance Services				33,470.69
450 Construction Services				292,183.84
<b>Total Purchased Property Services</b>				<b>\$325,654.53</b>
<b>Total 4500 Building Acquisition and Construction Services – Original and Additional</b>				<b>\$325,654.53</b>

General Fund (10)

	<u>Elementary</u>	<u>Secondary</u>	<u>Federal</u>	<u>Total</u>
<b>4600 Existing Building Improvement Services</b>				
<b>400 Purchased Property Services</b>				
430 Repairs and Maintenance Services				2,076.00
<b>Total Purchased Property Services</b>				<b>\$2,076.00</b>
<b>700 Property</b>				
752 Capital Equipment – Original and Additional			39,564.28	39,564.28
<b>Total Property</b>			<b>\$39,564.28</b>	<b>\$39,564.28</b>
<b>Total 4600 Existing Building Improvement Services</b>			<b>\$39,564.28</b>	<b>\$41,640.28</b>

**General Fund (10)**

**5000 Other Expenditures and Financing Uses**

**Total**

**800 Other Objects**

830 Interest

297,241.28

**Total Other Objects**

**\$297,241.28**

**900 Other Uses of Funds**

910 Redemption of Principal

739,805.66

932 Capital Reserve Fund Transfers Applicable To Fund 32

266,616.99

**Total Other Uses of Funds**

**\$1,006,422.65**

**Total 5000 Other Expenditures and Financing Uses**

**\$1,303,663.93**

General Fund (10)

	<u>Elementary</u>	<u>Secondary</u>	<u>Federal</u>	<u>Total</u>
<b>5100 Debt Service / Other Expenditures and Financing Uses</b>				
<b>800 Other Objects</b>				
830 Interest				297,241.28
<b>Total Other Objects</b>				<b>\$297,241.28</b>
<b>900 Other Uses of Funds</b>				
910 Redemption of Principal				739,805.66
<b>Total Other Uses of Funds</b>				<b>\$739,805.66</b>
<b>Total 5100 Debt Service / Other Expenditures and Financing Uses</b>				<b>\$1,037,046.94</b>

General Fund (10)

	<u>Elementary</u>	<u>Secondary</u>	<u>Federal</u>	<u>Total</u>
<b>5110 Debt Service</b>				
<b>800 Other Objects</b>				
830 Interest				297,241.28
<b>Total Other Objects</b>				<b>\$297,241.28</b>
<b>900 Other Uses of Funds</b>				
910 Redemption of Principal				739,805.66
<b>Total Other Uses of Funds</b>				<b>\$739,805.66</b>
<b>Total 5110 Debt Service</b>				<b>\$1,037,046.94</b>

LEA : 110179003 West Branch Area SD

Printed 11/2/2017 11:15:15 AM

General Fund (10)

	<u>Elementary</u>	<u>Secondary</u>	<u>Federal</u>	<u>Total</u>
<b>5200 Interfund Transfers – Out</b>				
<b>900 Other Uses of Funds</b>				
932 Capital Reserve Fund Transfers Applicable To Fund 32				266,616.99
<b>Total Other Uses of Funds</b>				<b>\$266,616.99</b>
<b>Total 5200 Interfund Transfers – Out</b>				<b>\$266,616.99</b>

LEA : 110179003 West Branch Area SD

Printed 11/2/2017 11:15:15 AM

General Fund (10)

5230 Capital Projects Fund Transfers

Elementary

Secondary

Federal

Total

900 Other Uses of Funds

932 Capital Reserve Fund Transfers Applicable To Fund 32

266,616.99

**Total Other Uses of Funds**

**\$266,616.99**

**Total 5230 Capital Projects Fund Transfers**

**\$266,616.99**

LEA : 110179003 West Branch Area SD

Printed 11/2/2017 11:15:16 AM

**Capital Reserve Fund - § 1431 (32)**

**5000 Other Expenditures and Financing Uses**

**Total**

**900 Other Uses of Funds**

910 Redemption of Principal

191,474.00

**Total Other Uses of Funds**

**\$191,474.00**

**Total 5000 Other Expenditures and Financing Uses**

**\$191,474.00**



LEA : 110179003 West Branch Area SD

Printed 11/2/2017 11:15:16 AM

Capital Reserve Fund - § 1431 (32)

5100 Debt Service / Other Expenditures and Financing Uses

Elementary

Secondary

Federal

Total

900 Other Uses of Funds

910 Redemption of Principal

191,474.00

**Total Other Uses of Funds**

**\$191,474.00**

**Total 5100 Debt Service / Other Expenditures and Financing Uses**

**\$191,474.00**

LEA : 110179003 West Branch Area SD

Printed 11/2/2017 11:15:16 AM

Capital Reserve Fund - § 1431 (32)

5110 Debt Service

Elementary

Secondary

Federal

Total

900 Other Uses of Funds

910 Redemption of Principal

191,474.00

**Total Other Uses of Funds**

**\$191,474.00**

**Total 5110 Debt Service**

**\$191,474.00**

	<u>General Fund(10)</u>	<u>Public Purpose Trust(27)</u>	<u>Other Compt Approved (28)</u>	<u>Athletic / Activity(29)</u>	<u>Capital Reserve (690. 1850)(31)</u>
<b>1000 Instruction</b>					
1100 Regular Programs - Elementary / Secondary	6,585,607.06				
1200 Special Programs - Elementary / Secondary	2,285,486.59				
1300 Vocational Education	788,865.48				
1400 Other Instructional Programs - Elementary / Secondary	172,051.26				
1800 Pre-Kindergarten	232,917.35				
<b>Total Instruction</b>	<b>\$10,064,927.74</b>				
<b>2000 Support Services</b>					
2100 Support Services - Students	480,815.28				
2200 Support Services - Instructional Staff	755,771.22				
2300 Support Services - Administration	940,536.62				
2400 Support Services - Pupil Health	153,874.62				
2500 Support Services - Business	272,548.06				
2600 Operation and Maintenance of Plant Services	1,456,347.35				
2700 Student Transportation Services	922,062.85				
2800 Support Services - Central	1,413.68				
<b>Total Support Services</b>	<b>\$4,983,369.68</b>				
<b>3000 Operation of Non-Instructional Services</b>					
3200 Student Activities	371,467.11				
<b>Total Operation of Non-Instructional Services</b>	<b>\$371,467.11</b>				
<b>4000 Facilities Acquisition, Construction and Improvement Services</b>					
4300 Architecture and Engineering Services / Educational Specifications Development - Original and Additional	1,781.37				
4500 Building Acquisition and Construction Services - Original and Additional	325,654.53				
4600 Existing Building Improvement Services	41,640.28				
<b>Total Facilities Acquisition, Construction and Improvement Services</b>	<b>\$369,076.18</b>				
<b>5000 Other Expenditures and Financing Uses</b>					
5100 Debt Service / Other Expenditures and Financing Uses	1,037,046.94				
5200 Interfund Transfers - Out	266,616.99				
<b>Total Other Expenditures and Financing Uses</b>	<b>\$1,303,663.93</b>				
<b>TOTAL ACTUAL EXPENDITURES &amp; OTHER FINANCING USES</b>	<b>\$17,092,504.64</b>				

	<u>Capital Reserve (1431)(32)</u>	<u>Other Capital Projects Fund(39)</u>	<u>Debt Service(40)</u>	<u>Permanent(90)</u>	<u>Total</u>
<b>1000 Instruction</b>					
1100 Regular Programs - Elementary / Secondary					6,585,607.06
1200 Special Programs - Elementary / Secondary					2,285,486.59
1300 Vocational Education					788,865.48
1400 Other Instructional Programs - Elementary / Secondary					172,051.26
1800 Pre-Kindergarten					232,917.35
<b>Total Instruction</b>					<b>\$10,064,927.74</b>
<b>2000 Support Services</b>					
2100 Support Services - Students					480,815.28
2200 Support Services - Instructional Staff					755,771.22
2300 Support Services - Administration					940,536.62
2400 Support Services - Pupil Health					153,874.62
2500 Support Services - Business					272,548.06
2600 Operation and Maintenance of Plant Services					1,456,347.35
2700 Student Transportation Services					922,062.85
2800 Support Services - Central					1,413.68
<b>Total Support Services</b>					<b>\$4,983,369.68</b>
<b>3000 Operation of Non-Instructional Services</b>					
3200 Student Activities					371,467.11
<b>Total Operation of Non-Instructional Services</b>					<b>\$371,467.11</b>
<b>4000 Facilities Acquisition, Construction and Improvement Services</b>					
4300 Architecture and Engineering Services / Educational Specifications Development - Original and Additional					1,781.37
4500 Building Acquisition and Construction Services - Original and Additional					325,654.53
4600 Existing Building Improvement Services					41,640.28
<b>Total Facilities Acquisition, Construction and Improvement Services</b>					<b>\$369,076.18</b>
<b>5000 Other Expenditures and Financing Uses</b>					
5100 Debt Service / Other Expenditures and Financing Uses	191,474.00				1,228,520.94
5200 Interfund Transfers - Out					266,616.99
<b>Total Other Expenditures and Financing Uses</b>	<b>\$191,474.00</b>				<b>\$1,495,137.93</b>
<b>TOTAL ACTUAL EXPENDITURES &amp; OTHER FINANCING USES</b>	<b>\$191,474.00</b>				<b>\$17,283,978.64</b>

LEA : 110179003 West Branch Area SD

Printed 11/2/2017 11:15:23 AM

**PSERS Salary Data (Salary Data should relate to the General Fund only)**

<b>Amount Description</b>	<b>Amount</b>
Total Salary Base for salaries subject to PSERS withholding	6,749,572.87
Total Federally Funded salaries subject to PSERS withholding	491,827.29
	<hr/>

**Title I Expenditure Data**

<b>Amount Description</b>	<b>Amount</b>
Expenditures Funded with Current Title I Funds	314,402.00
Expenditures Funded with Carry over Title I Funds	42,000.00
	<hr/>
<b>Total Title I Expenditure Data</b>	<b>\$356,402.00</b>
	<hr/>

**Title I ARRA Amount**

<b>Amount Description</b>	<b>Amount</b>
Portion of Total Title I Expenditures funded with ARRA Title I	<hr/>

**Benefits for Staff Relative to Collective Bargaining Agreements**

	OBJECT	COVERED	NOT COVERED	TOTAL
<b>10 General Fund</b>				
	211 Medical Insurance			
	212 Dental Insurance			
	215 Eye Care Insurance			
	216 Prescription Insurance			
	271 Self-Insurance Medical Benefits	1,533,422.26	166,517.82	1,699,940.08
	272 Self-Insurance Dental Benefits	61,950.24	5,699.17	67,649.41
	275 Self-Insurance Eye Care Benefits			
	276 Self-Insurance Prescription Benefits			
	<b>FUND TOTAL</b>		<b>\$1,595,372.50</b>	<b>\$172,216.99</b>
<b>50 Enterprise Fund</b>				
	211 Medical Insurance			
	212 Dental Insurance			
	215 Eye Care Insurance			
	216 Prescription Insurance			
	271 Self-Insurance Medical Benefits	47,432.48		47,432.48
	272 Self-Insurance Dental Benefits	3,708.87		3,708.87
	275 Self-Insurance Eye Care Benefits			
	276 Self-Insurance Prescription Benefits			
	<b>FUND TOTAL</b>		<b>\$51,141.35</b>	
<b>60 Internal Service Fund</b>	No Self Insurance data to report			
	211 Medical Insurance			
	212 Dental Insurance			
	215 Eye Care Insurance			
	216 Prescription Insurance			
	271 Self-Insurance Medical Benefits			
	272 Self-Insurance Dental Benefits			
	275 Self-Insurance Eye Care Benefits			
	276 Self-Insurance Prescription Benefits			
	<b>FUND TOTAL</b>			
<b>Total of All Funds</b>		<b>\$1,646,513.85</b>	<b>\$172,216.99</b>	<b>\$1,818,730.84</b>

LEA : 110179003 West Branch Area SD

Printed 11/2/2017 11:15:25 AM

Function	Special Education (Prior Year)	Nonspecial Education (Prior Year)	Total (Prior Year)	Special Education (Current Year)	Nonspecial Education (Current Year)	Total (Current Year)
2120 Guidance Services	270,337.65	67,584.42	337,922.07	256,213.35	85,404.45	341,617.80
2140 Psychological Services	32,751.06	8,187.76	40,938.82	29,912.06	5,278.60	35,190.66
2150 Speech Pathology and Audiology Services						
2160 Social Work Services						
2260 Instruction and Curriculum Development Services	49,180.14	7,031.24	56,211.38	51,361.71	5,706.86	57,068.57
2350 Legal and Accounting Services	6,929.41	27,717.63	34,647.04	5,305.52	2,122.10	7,427.62
2420 Medical Services	76,177.18		76,177.18	53,004.47		53,004.47
2440 Nursing Services	21,333.46	85,333.87	106,667.33	19,934.03	79,736.12	99,670.15
2700 Student Transportation Services	176,535.71	683,060.43	859,596.14	179,572.64	739,690.21	919,262.85
<b>Total</b>	<b>\$633,244.61</b>	<b>\$878,915.35</b>	<b>\$1,512,159.96</b>	<b>\$595,303.78</b>	<b>\$917,938.34</b>	<b>\$1,513,242.12</b>

(PRINCIPAL AMOUNTS ONLY)

**GOVERNMENTAL FUNDS/ ACTIVITIES**

	Short-Term Borrowing	General Obligation Bonds/Notes	Authority Building Obligations	Other Long-Term Debt	Other Post-Employment Benefits (OPEB)	Compensated Absences	Net Pension Liability	Total
1. Debt at Beginning of Fiscal Year		9,229,408.00		1,865,000.00	1,521,530.00	246,845.00	20,928,000.00	33,790,783.00
2. Additional Debt Incurred During Year					949,281.00	119,074.00	3,557,000.00	4,625,355.00
3. Retirements and Repayments		790,562.38		140,000.00				930,562.38
4. Debt at End of Fiscal Year		8,438,845.62		1,725,000.00	2,470,811.00	365,919.00	24,485,000.00	37,485,575.62
5. Accreted Interest at End Of Fiscal Year								
6. Total Debt and Accreted Interest		8,438,845.62		1,725,000.00	2,470,811.00	365,919.00	24,485,000.00	37,485,575.62
7. Current Portion P&I - Due within 1 year		1,044,579.66		164,623.97				1,209,203.63
8. Interest Paid during current fiscal year		245,767.28		51,474.00				297,241.28

(PRINCIPAL AMOUNTS ONLY)

**PROPRIETARY FUNDS**

- 1. Debt at Beginning of Fiscal Year
- 2. Additional Debt Incurred During Year
- 3. Retirements and Repayments
- 4. Debt at End of Fiscal Year
- 5. Accreted Interest at End Of Fiscal Year
- 6. Total Debt and Accreted Interest
- 7. Current Portion P&I - Due within 1 year
- 8. Interest Paid during current fiscal year



**Total Principal and Interest Payments Made by Your School - All Funds**

Function	Fund		Principal (910)	Principal (920)	Interest (830)	Total (Principal +Interest)	Misc Other Uses (990)
5110	10	General Fund	739,805.66		297,241.28	1,037,046.94	
5110	20	Special Revenue Funds					
5110	30	Capital Projects Funds	191,474.00			191,474.00	
5110	40	Debt Service Fund					
5110	90	Permanent Fund					
5120	10	General Fund					
5120	20	Special Revenue Funds					
5120	30	Capital Projects Funds					
5120	40	Debt Service Fund					

<b>Total Debt Payments - Governmental Funds</b>			<b>\$931,279.66</b>		<b>\$297,241.28</b>	<b>\$1,228,520.94</b>	
---	--	--	---------------------	--	---------------------	-----------------------	--

Function	Fund		Principal (910)	Principal (920)	Interest (830)	Total (Principal +Interest)
5110	50	Enterprise Fund				
5110	60	Internal Service Fund				
5120	50	Enterprise Fund				
5120	60	Internal Service Fund				

<b>Total Debt Payments - Proprietary Funds</b>						
--	--	--	--	--	--	--

**Debt Details**  
**Governmental Funds/ Activities**

Debt Category	Debt Issue Date (MM/YYYY)	Principal Amounts Only			Debt at End of Fiscal Year	Current Portion Due Within One Year (Principal and Interest)	Interest Paid During Fiscal Year
		Debt at Beginning of Fiscal Year	Additions	Reductions / Repayments			
General Obligation Bonds/Notes – CIB	03/2016	8,275,000.00		670,000.00	7,605,000.00	885,125.00	206,875.00
General Obligation Bonds/Notes – CIB	05/2008	321,994.24		40,643.28	281,350.96	53,846.91	13,203.63
General Obligation Bonds/Notes – CIB	05/2007	632,413.76		79,919.10	552,494.66	105,607.75	25,688.65
Extended Term Financing Agreements		1,865,000.00		140,000.00	1,725,000.00	164,623.97	51,474.00
Compensated Absences		246,845.00	119,074.00		365,919.00		
Other Post-Employment Benefits (OPEB)		1,521,530.00	949,281.00		2,470,811.00		
Net Pension Liability		20,928,000.00	3,557,000.00		24,485,000.00		
<b>Totals for Debt Entered:</b>		<b>\$33,790,783.00</b>	<b>\$4,625,355.00</b>	<b>\$930,562.38</b>	<b>\$37,485,575.62</b>	<b>\$1,209,203.63</b>	<b>\$297,241.28</b>

**General Fund (10)**

**Section 1: Tuition/Purchased Services as Reported within Expenditure Detail**

	Amount
Tuition Reported in General Fund Expenditures 1000-560	955,951.60
Purchased Services in General Fund Expenditures 1000-594 and 1000-597	3,481.22
<b>Section 1 Total</b>	<b>\$959,432.82</b>

**Section 2: Tuition Paid to Institution Types During Fiscal Year**

	Tuition Paid For Nonspecial Education	Tuition Paid For Special Education	Total
1 1306 Institutions			
2 Institutionalized Children's Programs		3,481.22	3,481.22
3 Juveniles Incarcerated in Adult Facilities			
4 Residential Treatment Facilities			
5 Other Local Education Agencies			
6 Brick and Mortar Charter Schools	10,676.42		10,676.42
7 Cyber Charter Schools	193,836.87	129,224.58	323,061.45
8 Career and Technology Centers	341,736.97	227,824.64	569,561.61
9 Approved Private Schools			
10 PA Chartered Schools for the Deaf and Blind			
11 Private Residential Rehabilitative Institutions			
12 Juvenile Detention Centers	34,693.00	17,959.12	52,652.12
13 Special Program Jointures			
14 Other Tuition Not Included Elsewhere In This Section			
<b>Section 2 Total</b>	<b>\$580,943.26</b>	<b>\$378,489.56</b>	<b>\$959,432.82</b>

**Food Service / Cafeteria Operations Fund (51)**

**3000 Operation of Non-Instructional Services**

**Total**

**100 Personnel Services – Salaries**

100 Personnel Services – Salaries 90,982.75

**Total Personnel Services – Salaries \$90,982.75**

**200 Personnel Services – Employee Benefits**

210 Group Insurance – Contracted Provider 133.90

220 Social Security Contributions 3,361.82

230 PSERS Retirement Contributions 13,314.61

250 Unemployment Compensation 1,325.84

270 Group Insurance – Self-Insurance 51,141.35

**Total Personnel Services – Employee Benefits \$69,277.52**

**300 Purchased Professional and Technical Services**

390 Other Purchased Professional and Technical Services 913.00

**Total Purchased Professional and Technical Services \$913.00**

**400 Purchased Property Services**

430 Repairs and Maintenance Services 19,471.82

**Total Purchased Property Services \$19,471.82**

**500 Other Purchased Services**

520 Insurance – General 140.00

570 Food Service Management 339,818.76

580 Travel 68.04

**Total Other Purchased Services \$340,026.80**

**600 Supplies**

610 General Supplies 5,584.89

630 Food 69,281.36

650 Supplies & Fees – Technology Related 1,325.75

**Total Supplies \$76,192.00**

**700 Property**

740 Depreciation 12,757.00

**Total Property \$12,757.00**

**800 Other Objects**

810 Dues and Fees 1,055.20

890 Miscellaneous Expenditures 38.80

**Total Other Objects \$1,094.00**

**Total 3000 Operation of Non-Instructional Services \$610,714.89**

LEA : 110179003 West Branch Area SD

Printed 11/2/2017 11:15:27 AM

Page - 2 of 2

**Food Service / Cafeteria Operations Fund (51)**

	<u>Elementary</u>	<u>Secondary</u>	<u>Federal</u>	<u>Total</u>
<b>3100 Food Services</b>				
<b>100 Personnel Services – Salaries</b>				
100 Personnel Services – Salaries				90,982.75
<b>Total Personnel Services – Salaries</b>				<b>\$90,982.75</b>
<b>200 Personnel Services – Employee Benefits</b>				
210 Group Insurance – Contracted Provider				133.90
220 Social Security Contributions				3,361.82
230 PSERS Retirement Contributions				13,314.61
250 Unemployment Compensation				1,325.84
270 Group Insurance – Self-Insurance				51,141.35
<b>Total Personnel Services – Employee Benefits</b>				<b>\$69,277.52</b>
<b>300 Purchased Professional and Technical Services</b>				
390 Other Purchased Professional and Technical Services				913.00
<b>Total Purchased Professional and Technical Services</b>				<b>\$913.00</b>
<b>400 Purchased Property Services</b>				
430 Repairs and Maintenance Services				19,471.82
<b>Total Purchased Property Services</b>				<b>\$19,471.82</b>
<b>500 Other Purchased Services</b>				
520 Insurance – General				140.00
570 Food Service Management				339,818.76
580 Travel				68.04
<b>Total Other Purchased Services</b>				<b>\$340,026.80</b>
<b>600 Supplies</b>				
610 General Supplies				5,584.89
630 Food				69,281.36
650 Supplies & Fees – Technology Related				1,325.75
<b>Total Supplies</b>				<b>\$76,192.00</b>
<b>700 Property</b>				
740 Depreciation				12,757.00
<b>Total Property</b>				<b>\$12,757.00</b>
<b>800 Other Objects</b>				
810 Dues and Fees				1,055.20
890 Miscellaneous Expenditures				38.80
<b>Total Other Objects</b>				<b>\$1,094.00</b>
<b>Total 3100 Food Services</b>				<b>\$610,714.89</b>

	<u>Food Service(51)</u>	<u>Child Care Operations(52)</u>	<u>Other Enterprise(58)</u>	<u>Internal Service(60)</u>	<u>Total</u>
<b>3000 <u>Operation of Non-Instructional Services</u></b>					
3100 Food Services	610,714.89				610,714.89
<b>Total Operation of Non-Instructional Services</b>	<b>\$610,714.89</b>				<b>\$610,714.89</b>
<b>TOTAL ACTUAL EXPENDITURES &amp; OTHER FINANCING USES</b>	<b>\$610,714.89</b>				<b>\$610,714.89</b>