

LEA Name : West Branch Area SD
Address : 516 Allport Cutoff
Morrisdale , PA 16858

County : Clearfield
AUN Number : 110179003
LEA Type : SD

Annual Financial Report Accuracy Certification Statement

For Fiscal Year Ending
6/30/2016

Pennsylvania Department of Education
&
Office of Comptroller Operations

PDE-2056: Intermediate Unit

PDE-2057: School District, AVTS/CTC, Charter School,
and Special Program Jointure


CERTIFICATION: By signing this page I agree that the electronic data submitted is a complete and accurate statement of the financial operations and status of the local education agency for the fiscal year. It has been prepared in accordance with generally accepted accounting principles and established Commonwealth of PA reporting guidelines.



Chief School Administrator Signature

10-31-16

Date



Board Secretary Signature

10/31/2016

Date

Jason S McMillen

(814)345-5615 Ext :4850

Contact Person

Contact Person Telephone Number

jmcmillen@westbranch.org

(814)345-5220

Contact Person E-mail Address

Contact Person Fax Number

Audit Certification
Annual Financial Report:
For Fiscal Year Ending **6/30/2016**
(Pursuant to PA School Code Section 218(b))

LEA Name : West Branch Area SD
AUN Number : 110179003
County : Clearfield

Audit Certification Due: 12/31/2016

This certification is applicable to:

- Orig. Annual Financial Report submitted to Comptroller Operations:** October 21, 2016
Date
- Annual Financial Report revisions submitted on:** _____
Date

Auditing Firm: Baker Tilly Virchow Krause, LLP
220 Regent Court, Suite C
State College, PA 16801

Auditor Contact Name: Rick Bair, Partner, CPA
Auditor Phone: 814-206-7503
Auditor E-mail: rick.bair@bakertilly.com

CERTIFICATION: By signing this page I agree that the financial statements of the school have been properly audited as noted above pursuant to Article XIV, and in the auditor's professional opinion, the Annual Financial Report (PDE-2057) submitted on the date referenced is materially consistent with the audited financial statements.

Chief School Administrator

Michelle Diston
Signature Date 10-21-2016

Board Secretary

Kasi Woodring
Signature Date 10/21/2016

Page 2

Jason S McMillen

Contact Person

jmcmillen@westbranch.org

Contact Person E-mail Address

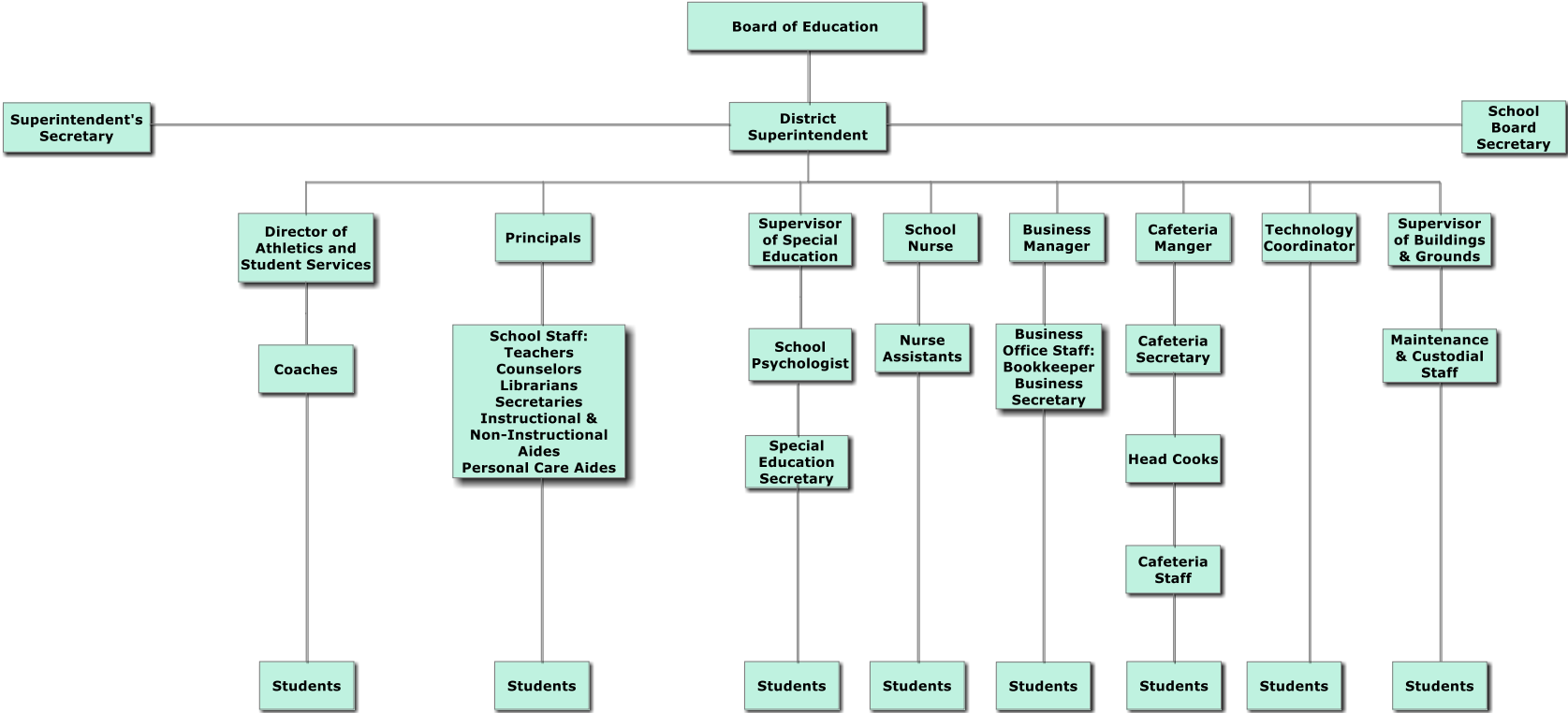
(814)345-5615 Ext :4850

Contact Person Telephone Number

(814)345-5220

Contact Person Fax Number

West Branch Area School District
Organizational Chart



Made with a Trial
Copy of SmartDraw

Buy SmartDraw - purchased copies print this document without a watermark.
Visit www.smartdraw.com or call 1-800-768-3729.

<u>Val Number</u>	<u>Description</u>	<u>Justification</u>
30680	Revenue Detail: Current Tax Revenue amount cannot exceed 30% variance from prior year amount. Correct the data or enter a justification. 6153, Current AFR Rev Detail: \$47,874.44 6153, Prior AFR Rev Detail: \$28,046.43	Real Estate Transfer taxes are very volatile in the District. Predicting revenue for one year based on the previous year is not possible. This error (cannot exceed more than 30%) has occurred each year for the past 4 or five years.
50280	SOIN: Current Year AFR amount must equal Prior Year AFR amount. SOIN, Beg Bal, Gen Obl Bnds: \$9,530,249.83 PY Ending Bal, Gen Obl Bnds: \$8,460,000.00	Amounts from three debt issues from 05-2007 and 05-2008 were not previously reported. The current amounts remaining on these issues are \$709,213.27 and \$361,036.56 respectively.
50410	SESS - 2140 Psychological Services: SESS Schedule amounts for Special Education vary from prior year by 40% or more. Correct the data or enter a justification. SESS Schedule 2140: \$32,751.06 Prior Year SESS Schedule 2140: \$64,483.32	The Psychologist resigned and is no longer an employee. The District contracted with another person to provide this service at a lower cost than previously required.
50440	SESS - 2260 Instruction and Curriculum Development Services: SESS Schedule amounts for Special Education vary from prior year by 40% or more. Correct the data or enter a justification. SESS Schedule 2260: \$49,180.14 Prior Year SESS Schedule 2260: \$116,788.72	A highly compensated employee was replaced with a less highly compensated employee.
50450	SESS - 2350 Legal and Accounting Services: SESS Schedule amounts for Special Education vary from prior year by 40% or more. Correct the data or enter a justification. SESS Schedule 2350: \$6,929.41 Prior Year SESS Schedule 2350: \$2,832.61	The number of legal issues has increased this year.

Amounts Expressed in Whole Dollars

<u>General Fund</u>	<u>Public Purpose Trust</u>	<u>Other Compt Approved</u>	<u>Athletic / Activity</u>	<u>Capital Reserve (690.</u>
<u>(10)</u>	<u>(27)</u>	<u>(28)</u>	<u>(29)</u>	<u>1850)</u>
				<u>(31)</u>

Assets And Deferred Outflows Of Resources

Assets

0100 Cash and Cash Equivalents	444,753
0110 Investments	7,035,328
0120 Taxes Receivable	744,761
0130 Due From Other Funds	2,552
0141 Due From Other Governments	262,293
0142 State Revenue Receivable	320,773
0143 Federal Revenue Receivable	63,508
0145 Other Intergovernmental Revenue Receivable	
0146 Due from Primary Government	
0147 Due from Component Unit	
0150 Other Receivables	
0170 Inventories	
0180 Prepaid Expenses (Expenditures)	
0190 Other Current Assets	

Total Assets	\$8,873,968
---------------------	--------------------

0910 Deferred Outflows of Resources

Total Assets And Deferred Outflows Of Resources	\$8,873,968
--	--------------------

Amounts Expressed in Whole Dollars

	<u>Capital Reserve (1431)</u> <u>(32)</u>	<u>Other Capital Projects</u> <u>Fund</u> <u>(39)</u>	<u>Debt Service</u> <u>(40)</u>	<u>Permanent</u> <u>(90)</u>	<u>Total Governmental</u> <u>Funds</u>
Assets And Deferred Outflows Of Resources					
Assets					
0100 Cash and Cash Equivalents		40,699			485,452
0110 Investments					7,035,328
0120 Taxes Receivable					744,761
0130 Due From Other Funds		35,564			38,116
0141 Due From Other Governments					262,293
0142 State Revenue Receivable					320,773
0143 Federal Revenue Receivable					63,508
0145 Other Intergovernmental Revenue Receivable					
0146 Due from Primary Government					
0147 Due from Component Unit					
0150 Other Receivables					
0170 Inventories					
0180 Prepaid Expenses (Expenditures)					
0190 Other Current Assets					
Total Assets		\$76,263			\$8,950,231
0910 Deferred Outflows of Resources					
Total Assets And Deferred Outflows Of Resources		\$76,263			\$8,950,231

Amounts Expressed in Whole Dollars	<u>General Fund</u> <u>(10)</u>	<u>Public Purpose Trust</u> <u>(27)</u>	<u>Other Compt Approved</u> <u>(28)</u>	<u>Athletic / Activity</u> <u>(29)</u>	<u>Capital Reserve (690.</u> <u>1850)</u> <u>(31)</u>
Liabilities And Deferred Inflows Of Resources And Fund Balances					
Liabilities					
0400 Due to Other Funds	35,564				
0411 Due to Other Governments					
0412 Due to Primary Government					
0413 Due to Component Unit					
0420 Accounts Payable	265,896				
0430 Contracts Payable					
0440 Current Portion of Long-Term Debt					
0450 Short-Term Payables					
0461 Accrued Salaries and Benefits	1,101,772				
0462 Payroll Deductions and Withholding	250,853				
0480 Unearned Revenues					
0490 Other Current Liabilities					
Total Liabilities	\$1,654,085				
0950 Deferred Inflows of Resources	553,631				
Fund Balances					
0810 Nonspendable Fund Balance					
0820 Restricted Fund Balance					
0830 Committed Fund Balance					
0840 Assigned Fund Balance	1,877,910				
0850 Unassigned Fund Balance	4,788,342				
Total Fund Balances	\$6,666,252				
Total Liabilities, Deferred Inflows Of Resources And Fund Balances	\$8,873,968				

Amounts Expressed in Whole Dollars	<u>Capital Reserve (1431)</u> <u>(32)</u>	<u>Other Capital Projects</u> <u>Fund</u> <u>(39)</u>	<u>Debt Service</u> <u>(40)</u>	<u>Permanent</u> <u>(90)</u>	<u>Total Governmental</u> <u>Funds</u>
Liabilities And Deferred Inflows Of Resources And Fund Balances					
Liabilities					
0400 Due to Other Funds					35,564
0411 Due to Other Governments					
0412 Due to Primary Government					
0413 Due to Component Unit					
0420 Accounts Payable					265,896
0430 Contracts Payable					
0440 Current Portion of Long-Term Debt					
0450 Short-Term Payables					
0461 Accrued Salaries and Benefits					1,101,772
0462 Payroll Deductions and Withholding					250,853
0480 Unearned Revenues					
0490 Other Current Liabilities					
Total Liabilities					\$1,654,085
0950 Deferred Inflows of Resources					553,631
Fund Balances					
0810 Nonspendable Fund Balance					
0820 Restricted Fund Balance		76,263			76,263
0830 Committed Fund Balance					
0840 Assigned Fund Balance					1,877,910
0850 Unassigned Fund Balance					4,788,342
Total Fund Balances		\$76,263			\$6,742,515
Total Liabilities, Deferred Inflows Of Resources And Fund Balances		\$76,263			\$8,950,231

Amounts Expressed in Whole Dollars	<u>General Fund</u> <u>(10)</u>	<u>Public Purpose Trust</u> <u>(27)</u>	<u>Other Compt Approved</u> <u>(28)</u>	<u>Athletic / Activity</u> <u>(29)</u>	<u>Capital Reserve (690.</u> <u>1850)</u> <u>(31)</u>
Revenues					
6000 Revenue from Local Sources	5,062,386				
7000 Revenue from State Sources	11,506,048				
8000 Revenue from Federal Sources	310,259				
Total Revenues	\$16,878,693				
Expenditures					
1000 Instruction	9,695,522				
2000 Support Services	4,780,182				
3000 Operation of Non-Instructional Services	454,188				
4000 Facilities Acquisition, Construction and Improvement Services	1,473,441				
5110 Debt Service	1,118,757				
5130 Refund of Prior Year Revenues / Receipts					
5140 Short-Term Borrowing – Interest and Costs					
Total Expenditures	\$17,522,090				
Excess (Deficiency) Of Revenues Over Expenditures	(\$643,397)				
Other Financing Sources (Uses)					
9110 Face Value of Bonds Issued					
9120 Proceeds from Refunding of Bonds	8,665,000				
9130 Bond Premiums					
9200 Proceeds from Extended-Term Financing	1,309,812				
9300 Interfund Transfers - IN					
9400 Sale of or Compensation for Loss of Fixed Assets	8,456				
9710 Transfers from Component Units					
9720 Transfers from Primary Governments					
9910 Other Financing Sources Not Listed in the 9000 Series					
9990 Insurance Recoveries					
5120 Debt Service – Refunded Bonds	8,460,000				
5150 Bond Discounts					
5200 Interfund Transfers – Out					
5300 Transfers Out to Component Units/Primary Governments					
Total Other Financing Sources (Uses)	\$1,523,268				

Amounts Expressed in Whole Dollars	<u>Capital Reserve (1431)</u> <u>(32)</u>	<u>Other Capital Projects</u> <u>Fund</u> <u>(39)</u>	<u>Debt Service</u> <u>(40)</u>	<u>Permanent</u> <u>(90)</u>	<u>Total Governmental</u> <u>Funds</u>
Revenues					
6000 Revenue from Local Sources	43				5,062,429
7000 Revenue from State Sources					11,506,048
8000 Revenue from Federal Sources					310,259
Total Revenues	\$43				\$16,878,736
Expenditures					
1000 Instruction					9,695,522
2000 Support Services					4,780,182
3000 Operation of Non-Instructional Services					454,188
4000 Facilities Acquisition, Construction and Improvement Services					1,473,441
5110 Debt Service					1,118,757
5130 Refund of Prior Year Revenues / Receipts					
5140 Short-Term Borrowing – Interest and Costs					
Total Expenditures					\$17,522,090
Excess (Deficiency) Of Revenues Over Expenditures	\$43				(\$643,354)
Other Financing Sources (Uses)					
9110 Face Value of Bonds Issued					
9120 Proceeds from Refunding of Bonds					8,665,000
9130 Bond Premiums					
9200 Proceeds from Extended-Term Financing					1,309,812
9300 Interfund Transfers - IN					
9400 Sale of or Compensation for Loss of Fixed Assets					8,456
9710 Transfers from Component Units					
9720 Transfers from Primary Governments					
9910 Other Financing Sources Not Listed in the 9000 Series					
9990 Insurance Recoveries					
5120 Debt Service – Refunded Bonds					8,460,000
5150 Bond Discounts					
5200 Interfund Transfers – Out					
5300 Transfers Out to Component Units/Primary Governments					
Total Other Financing Sources (Uses)					\$1,523,268

Amounts Expressed in Whole Dollars	<u>General Fund</u> <u>(10)</u>	<u>Public Purpose Trust</u> <u>(27)</u>	<u>Other Compt Approved</u> <u>(28)</u>	<u>Athletic / Activity</u> <u>(29)</u>	<u>Capital Reserve</u> (690. <u>1850</u> <u>(31)</u>
Special And Extraordinary Items					
9920 Special Items – Gains					
9930 Extraordinary Items – Gains					
5520 Special Items – Losses					
5530 Extraordinary Items – Losses					
Net Change In Fund Balances	\$879,871				
Fund Balance					
0001 Fund Balance - Beginning of Fiscal Year	5,786,381				
Fund Balance - End Of Year	\$6,666,252				

Amounts Expressed in Whole Dollars	<u>Capital Reserve (1431)</u> <u>(32)</u>	<u>Other Capital Projects</u> <u>Fund</u> <u>(39)</u>	<u>Debt Service</u> <u>(40)</u>	<u>Permanent</u> <u>(90)</u>	<u>Total Governmental</u> <u>Funds</u>
Special And Extraordinary Items					
9920 Special Items – Gains					
9930 Extraordinary Items – Gains					
5520 Special Items – Losses					
5530 Extraordinary Items – Losses					
Net Change In Fund Balances	\$43				\$879,914
Fund Balance					
0001 Fund Balance - Beginning of Fiscal Year		76,220			5,862,601
Fund Balance - End Of Year		\$76,263			\$6,742,515

Amounts Expressed in Whole Dollars	<u>Food Service</u> <u>(51)</u>	<u>Child Care</u> <u>Operations</u> <u>(52)</u>	<u>Other Enterprise</u> <u>(58)</u>	<u>TOTAL</u>	<u>Internal Service</u> <u>(60)</u>
Assets And Deferred Outflows Of Resources					
Current Assets					
0100 Cash and Cash Equivalents	111,075			111,075	
0110 Investments					
0130 Due From Other Funds					
0141 Due From Other Governments					
0142 State Revenue Receivable	41,034			41,034	
0143 Federal Revenue Receivable					
0146 Due from Primary Government					
0147 Due from Component Unit					
0150 Other Receivables					
0170 Inventories	10,723			10,723	
0180 Prepaid Expenses (Expenditures)					
0190 Other Current Assets					
Total Current Assets	\$162,832			\$162,832	
Noncurrent Assets					
0211 Land					
0212 Site Improvements (Net)					
0220 Buildings and Building Improvements (Net)					
0230 Machinery, Equipment and Furniture (Net)	126,557			126,557	
0250 Construction in Progress					
0260 Long Term Prepayments					
0290 Other Noncurrent Assets					
Total Noncurrent Assets	\$126,557			\$126,557	
0910 Deferred Outflows of Resources					
Total Assets And Deferred Outflows Of Resources	\$289,389			\$289,389	

Amounts Expressed in Whole Dollars	<u>Food Service</u> (51)	<u>Child Care</u> <u>Operations</u> (52)	<u>Other Enterprise</u> (58)	<u>TOTAL</u>	<u>Internal Service</u> (60)
Liabilities And Deferred Inflows Of Resources And Net Position					
Current Liabilities					
0400 Due to Other Funds	2,552			2,552	
0411 Due to Other Governments					
0413 Due to Component Unit					
0420 Accounts Payable	10,109			10,109	
0430 Contracts Payable					
0440 Current Portion of Long-Term Debt					
0450 Short-Term Payables					
0461 Accrued Salaries and Benefits					
0462 Payroll Deductions and Withholding					
0480 Unearned Revenues	16,942			16,942	
0490 Other Current Liabilities					
Total Current Liabilities	\$29,603			\$29,603	
Noncurrent Liabilities					
0510 Bonds Payable					
0520 Extended-Term Financing Agreements Payable					
0530 Lease-Purchase Obligations					
0540 Accumulated Compensated Absences	5,220			5,220	
0550 Authority Lease Obligations					
0560 Other Post-Employment Benefits (OPEB)					
0570 Net Pension Liability					
0599 Other Long-Term Liabilities					
Total Noncurrent Liabilities	\$5,220			\$5,220	
Total Liabilities	\$34,823			\$34,823	
0950 Deferred Inflows of Resources					
Net Position					
0791 Invested in Capital Assets, Net of Related Debt	126,557			126,557	
0008 Restricted Net Position (0792 – 0798)					
0799 Unrestricted Net Position	128,009			128,009	
Total Net Position	\$254,566			\$254,566	
Total Liabilities And Deferred Inflows Of Resources And Net Position	\$289,389			\$289,389	

Amounts Expressed in Whole Dollars	<u>Food Service</u> <u>(51)</u>	<u>Child Care Operations</u> <u>(52)</u>	<u>Other Enterprise</u> <u>(58)</u>	<u>TOTAL</u>	<u>Internal Service</u> <u>(60)</u>
Operating Revenues					
6600 Food Service Revenue	224,356			224,356	
0071 Charges for Services					
0072 Other Operating Revenue					
Total Operating Revenues	\$224,356			\$224,356	
Operating Expenses					
100 Personnel Services – Salaries	115,838			115,838	
200 Personnel Services – Employee Benefits	75,335			75,335	
300 Purchased Professional and Technical Services					
400 Purchased Property Services	12,616			12,616	
500 Other Purchased Services	96,889			96,889	
600 Supplies	229,026			229,026	
740 Depreciation	12,757			12,757	
810 Dues and Fees	65			65	
890 Miscellaneous Expenditures	822			822	
Total Operating Expenses	\$543,348			\$543,348	
Operating Income (Loss)	(\$318,992)			(\$318,992)	
Non Operating Revenues (Expenses)					
6500 Earnings on Investments	64			64	
6920 Contributions and Donations from Private Sources					
6930 Gains or Losses on Sale of Fixed Assets					
6991 Refunds of a Prior Year Expenditure					
7000 Revenue from State Sources	19,755			19,755	
8000 Revenue from Federal Sources	335,438			335,438	
820 Claims and Judgments Against the LEA					
830 Interest					
TOTAL Non Operating Revenues (Expenses)	\$355,257			\$355,257	
Income (Loss) Before Contributions And Transfers	\$36,265			\$36,265	

Amounts Expressed in Whole Dollars	<u>Food Service</u> <u>(51)</u>	<u>Child Care Operations</u> <u>(52)</u>	<u>Other Enterprise</u> <u>(58)</u>	<u>TOTAL</u>	<u>Internal Service</u> <u>(60)</u>
Contributions, Transfers, and Special and Extraordinary Items					
5200 Interfund Transfers – Out					
5300 Transfers Out to Component Units/Primary Governments					
5520 Special Items – Losses					
5530 Extraordinary Items – Losses					
9300 Interfund Transfers - IN					
9500 Capital Contributions					
9700 Transfers IN From Component Units/Primary Governments					
9920 Special Items – Gains					
9930 Extraordinary Items – Gains					
Change In Net Position	\$36,265			\$36,265	
0002 Net Position - Beginning of Fiscal Year	218,301			218,301	
0003 Accounting Changes / Residual Equity Transfers					
Net Position - End Of Year	\$254,566			\$254,566	

Amounts Expressed in Whole Dollars	<u>Food Service</u> <u>(51)</u>	<u>Child Care Operations</u> <u>(52)</u>	<u>Other Enterprise</u> <u>(58)</u>	<u>TOTAL</u>	<u>Internal Service(60)</u>
Cash Flows From Operating Activities					
0011 Cash Receipts From Users	223,291			223,291	
0012 Cash Receipts From Assessments Made to Other Funds					
0013 Cash Receipts From Earnings on Investments					
0014 Cash Receipts From Other Operating Revenue					
0015 Cash Payments To Employees For Services	191,174			191,174	
0016 Cash Payments For Insurance Claims					
0017 Cash Payments To Suppliers For Goods and Services	298,809			298,809	
0018 Cash Payments For Other Operating Expenses					
Net Cash Provided By (Used For) Operating Activities	(\$266,692)			(\$266,692)	
Cash Flows From Non-Capital Financing Activities					
0021 Receipts From Local Sources - 6000					
0022 Receipts From State Sources - 7000	17,363			17,363	
0023 Receipts From Federal Sources -8000	298,768			298,768	
0024 Notes and Loans Received (Repaid)					
0025 Interest Paid on Notes/Loans - 5100-830					
0026 Operating Transfers In (Out)/Residual Equity Trans					
0027 Operating Transfers In (Out) Primary Government / Comp Unit					
0028 Receipts From Refund of Prior Year Expenditures - 6991					
0029 Special and Extraordinary Gains (losses)					
Net Cash Prov By (Used for) Non-Capital Financing Activities	\$316,131			\$316,131	
Cash Flows From Capital and Related Financing Activities					
0031 Payments For Fac Acq, Const, and Imp - 4000					
0032 Gain / (Loss) on Sale of Fixed Assets - 6930					
0033 Proceeds From Extended Term Financing - 9200					
0034 Principal Paid on Financing Agreements					
0035 Interest Paid on Financing Agreements - 5100-830					
0036 (Inc) Dec in Contributed Capital					
Net Cash Prov By (Used for) Capital and Related Financing Activities					
Cash Flows From Investing Activities					
0041 Earnings on Investments - 6500	64			64	
0042 Purchase of Inv Securities / Deposits to Inv Pools					
0043 Receipts From Investment Pool Withdrawals					
0044 Proceeds from Sale and Maturity of Inv Securities					
0045 Loans Received (Paid)					
Net Cash Prov By (Used for) Investing Activities	\$64			\$64	

	<u>Food Service</u> <u>(51)</u>	<u>Child Care Operations</u> <u>(52)</u>	<u>Other Enterprise</u> <u>(58)</u>	<u>TOTAL</u>	<u>Internal Service</u> <u>(60)</u>
Net Increase (Decrease) in Cash Flows	49,503			49,503	
0004 Cash and Cash Equivalents Beginning of Year	61,572			61,572	
Cash and Cash Equivalents at Year End	\$111,075			\$111,075	

Reconciliation of Operating Income (Loss) To Net Cash Provided by (Used For) Operating Activities

0005 Operating Income (Loss) per REP	(318,992)			(318,992)	
Adjustments					
0051 Depreciation and Net Amortization	12,757			12,757	
0052 Provision for Uncollectible Accounts					
0053 Other Adjustments					
Effect of Changes in Assets, Liabilities, Deferred Outflows and Deferred Inflows					
0054 (Inc) Dec In Accounts Receivable (0120-0150)					
0055 Advances to Other Funds (0160)					
0056 (Inc) Dec in Inventories (0170)	4,300			4,300	
0057 (Inc) Dec in Prepaid Expenses (0180)	40,443			40,443	
0058 (Inc) Dec in Other Current or Noncurrent Assets					
0064 Deferred Outflows (0910)					
0059 Inc (Dec) in Accounts Payable (0400-0450)	979			979	
0060 Inc (Dec) in Accrued Salaries/Benefits (0461)					
0065 Inc (Dec) in Net Pension Liabilities (0570)					
0066 Inc (Dec) in Other Postemp Benefit Oblig (0560)	615			615	
0061 Inc (Dec) in Payroll Deductions/Withholding (0462)					
0062 Inc (Dec) in Unearned Revenue (0480)	(1,065)			(1,065)	
0063 Inc (Dec) in Other Current or Noncurrent Liabilities	(5,729)			(5,729)	
0067 Deferred Inflows (0950)					
Total Adjustments	\$52,300			\$52,300	
Cash Provided By (Used for) Total	(\$266,692)			(\$266,692)	

COMBINED STATEMENT OF CASH FLOWS
SCHEDULE OF NONCASH INVESTING, CAPITAL, AND FINANCING ACTIVITIES

Explanation of Transaction and Balance Sheet Effect	Amount
Total	

LEA : 110179003 West Branch Area SD

Printed 10/31/2016 3:31:09 PM

Amounts Expressed in Whole Dollars

Private Purpose Trust
(71)

Investment Trust
(72)

Pension Trust
(73)

Activity
(81)

Assets And Deferred Outflows Of Resources

Assets

0100 Cash and Cash Equivalents				35,575
0110 Investments				
0130 Due From Other Funds				
0147 Due from Component Unit				
0150 Other Receivables				
0170 Inventories				
0180 Prepaid Expenses (Expenditures)				
0190 Other Current Assets				
0220 Buildings and Building Improvements (Net)				
0230 Machinery, Equipment and Furniture (Net)				

Total Assets **\$35,575**

0910 Deferred Outflows of Resources

Total Assets And Deferred Outflows Of Resources **\$35,575**

LEA : 110179003 West Branch Area SD

Printed 10/31/2016 3:31:09 PM

Amounts Expressed in Whole Dollars

	<u>Other Agency</u> <u>(89)</u>	<u>Discrete Component Units</u> <u>(98)</u>	<u>Discrete Component Units</u> <u>(99)</u>	<u>Total Fiduciary Funds</u>
Assets And Deferred Outflows Of Resources				
Assets				
0100 Cash and Cash Equivalents				35,575
0110 Investments				
0130 Due From Other Funds				
0147 Due from Component Unit				
0150 Other Receivables				
0170 Inventories				
0180 Prepaid Expenses (Expenditures)				
0190 Other Current Assets				
0220 Buildings and Building Improvements (Net)				
0230 Machinery, Equipment and Furniture (Net)				
Total Assets				\$35,575
0910 Deferred Outflows of Resources				
Total Assets And Deferred Outflows Of Resources				\$35,575

LEA : 110179003 West Branch Area SD

Printed 10/31/2016 3:31:09 PM

Amounts Expressed in Whole Dollars	<u>Private Purpose Trust</u> (71)	<u>Investment Trust</u> (72)	<u>Pension Trust</u> (73)	<u>Activity</u> (81)
Liabilities, Deferred Inflows Of Resources And Net Position				
Liabilities				
0400 Due to Other Funds				
0411 Due to Other Governments				
0412 Due to Primary Government				
0413 Due to Component Unit				
0420 Accounts Payable				
0430 Contracts Payable				
0450 Short-Term Payables				
0461 Accrued Salaries and Benefits				
0462 Payroll Deductions and Withholding				
0480 Unearned Revenues				
0490 Other Current Liabilities				35,575
Total Liabilities				\$35,575
0950 Deferred Inflows of Resources				
Net Position				
0791 Invested in Capital Assets, Net of Related Debt				
0009 Restricted Net Position (0792 – 0798)				
0799 Unrestricted Net Position				
Total Net Position				
Total Liabilities, Deferred Inflows Of Resources And Net Position				\$35,575

LEA : 110179003 West Branch Area SD

Printed 10/31/2016 3:31:09 PM

Amounts Expressed in Whole Dollars	<u>Other Agency</u> (89)	<u>Discrete Component Units</u> (98)	<u>Discrete Component Units</u> (99)	<u>Total Fiduciary Funds</u>
Liabilities, Deferred Inflows Of Resources And Net Position				
Liabilities				
0400 Due to Other Funds				
0411 Due to Other Governments				
0412 Due to Primary Government				
0413 Due to Component Unit				
0420 Accounts Payable				
0430 Contracts Payable				
0450 Short-Term Payables				
0461 Accrued Salaries and Benefits				
0462 Payroll Deductions and Withholding				
0480 Unearned Revenues				
0490 Other Current Liabilities				35,575
Total Liabilities				\$35,575
0950 Deferred Inflows of Resources				
Net Position				
0791 Invested in Capital Assets, Net of Related Debt				
0009 Restricted Net Position (0792 – 0798)				
0799 Unrestricted Net Position				
Total Net Position				
Total Liabilities, Deferred Inflows Of Resources And Net Position				\$35,575

	<u>Revenue Reported In Current Year</u>	<u>Current Year Tax Accrual</u>	<u>Prior Year Tax Accrual</u>	<u>Taxes Collected In Current Year</u>
<u>Revenue from Local Sources</u>				
6111 Current Real Estate Taxes	3,430,365.91			3,430,365.91
6114 Payments in Lieu of Current Taxes - State / Local	33,829.81			33,829.81
6120 Current Per Capita Taxes, Section 679	16,135.80			16,135.80
6141 Current Act 511 Per Capita Taxes	16,135.80			16,135.80
6142 Current Act 511 Occupation Taxes - Flat Rate	14,627.70			14,627.70
6143 Current Act 511 Local Services Taxes	6,275.80			6,275.80
6151 Current Act 511 Earned Income Taxes	632,277.76			632,277.76
6153 Current Act 511 Real Estate Transfer Taxes	47,874.44			47,874.44
6411 Delinquent Real Estate Taxes	418,988.66			418,988.66
6440 Delinquent Local Enabling Taxes - Flat Rate Assessments	2,722.70			2,722.70
6451 Delinquent Act 511 Earned Income Taxes	10,430.47			10,430.47
6500 Earnings on Investments	11,504.86			
6700 Revenues from LEA Activities	33,165.00			
6821 State Revenue Received from Other Pennsylvania Public LEAs	15,227.75			
6829 State Revenue Received from Other Sources	31,311.74			
6832 Federal IDEA Revenue Received as Pass Through	238,111.87			
6836 Federal ARRA Race to the Top Revenue Received as Pass Through	833.00			
6910 Rentals	225.00			
6920 Contributions and Donations from Private Sources	6,725.00			
6942 Summer School Tuition	2,700.00			
6991 Refunds of a Prior Year Expenditure	68,742.29			
6992 Energy Efficiency Revenues and Incentives	7,933.36			
6999 Other Revenues Not Specified Above	16,241.68			
TOTAL Revenue from Local Sources	\$5,062,386.40			\$4,629,664.85

**Revenue Reported
In Current Year**

Revenue from State Sources

7110 Basic Education Funding	7,177,755.41		
7160 Tuition for Orphans Subsidy	23,727.10		
7271 Special Education funds for School-Aged Pupils	766,227.00		
7311 Pupil Transportation Subsidy	649,765.29		
7330 Health Services (Medical, Dental, Nurse, Act 25)	26,766.30		
7340 State Property Tax Reduction Allocation	282,926.00		
7360 Safe Schools	19,501.76		
7505 Ready to Learn Block Grant	212,223.00		
7599 Other State Revenue Not Listed Elsewhere in the 7000 Series	878,088.00		
7810 State Share of Social Security and Medicare Taxes	330,601.92		
7820 State Share of Retirement Contributions	1,138,466.11		
TOTAL Revenue from State Sources	\$11,506,047.89		

**Revenue Reported
In Current Year**

Revenue from Federal Sources

8514 NCLB, Title I - Improving the Academic Achievement of the Disadvantaged	232,000.07		
8515 NCLB, Title II - Preparing, Training and Recruiting High Quality Teachers and Principals	56,432.00		
8519 NCLB, Title VI - Flexibility and Accountability	21,827.00		
TOTAL Revenue from Federal Sources	\$310,259.07		

	Revenue Reported In Current Year			
<u>Other Financing Sources</u>				
9120 Proceeds from Refunding of Bonds	8,665,000.00			
9290 Other Extended-Term Financing Proceeds	1,309,811.64			
9400 Sale of or Compensation for Loss of Fixed Assets	8,456.43			
TOTAL Other Financing Sources	\$9,983,268.07			
TOTAL FROM ALL SOURCES	\$26,861,961.43			\$4,629,664.85

Revenue from Local Sources	5,062,386.40
Revenue from State Sources	11,506,047.89
Revenue from Federal Sources	310,259.07
Other Financing Sources	9,983,268.07
TOTAL FROM ALL SOURCES	\$26,861,961.43

General Fund (10)

	<u>Total</u>
1000 Instruction	
100 Personnel Services – Salaries	
100 Personnel Services – Salaries	4,520,932.60
Total Personnel Services – Salaries	\$4,520,932.60
200 Personnel Services – Employee Benefits	
210 Group Insurance – Contracted Provider	1,209,573.93
220 Social Security Contributions	340,378.36
230 PSERS Retirement Contributions	1,206,591.18
240 Tuition Reimbursement	8,545.60
260 Workers’ Compensation	23,152.69
280 Other Post-Employment Benefits (OPEB)	106,622.67
Total Personnel Services – Employee Benefits	\$2,894,864.43
300 Purchased Professional and Technical Services	
310 Official / Administrative Services	450,906.25
322 Professional Educational Services – lus	192,357.26
329 Professional Educational Services – Other	888.71
340 Technical Services	6,339.16
390 Other Purchased Professional and Technical Services	508.31
Total Purchased Professional and Technical Services	\$650,999.69
400 Purchased Property Services	
430 Repairs and Maintenance Services	2,019.67
450 Construction Services	6,783.55
Total Purchased Property Services	\$8,803.22
500 Other Purchased Services	
510 Student Transportation Services	3,000.25
530 Communications	10,698.19
561 Tuition To Other School Districts Within the State	49,792.80
562 Tuition To Pennsylvania Charter Schools	410,540.34
564 Tuition To Career and Technology Centers	578,659.87
567 Tuition To Approved Private Schools (APS) and PA Chartered Schools for the Deaf and Blind	1.07
568 Tuition To Private Residential Rehabilitative Institutions (PRRI) [In-State] and Detention Centers	59,225.09
569 Tuition – Other	100,100.00
580 Travel	4,836.85
591 Services Purchased Locally	701.56
597 Direct Payments To Intermediate Units for Institutionalized Childrens' Program	1,774.31
Total Other Purchased Services	\$1,219,330.33
600 Supplies	
610 General Supplies	82,163.75
620 Energy	435.19
630 Food	363.62
640 Books and Periodicals	110,675.17
650 Supplies & Fees – Technology Related	1,865.39
Total Supplies	\$195,503.12

LEA : 110179003 West Branch Area SD

Printed 10/31/2016 3:31:15 PM

General Fund (10)

1000 Instruction	<u>Total</u>
700 <u>Property</u>	
750 Equipment – Original and Additional	159,793.01
760 Equipment – Replacement	11,688.12
Total Property	\$171,481.13
800 <u>Other Objects</u>	
810 Dues and Fees	32,012.59
840 Contingency	1,595.00
Total Other Objects	\$33,607.59
Total 1000 Instruction	\$9,695,522.11

General Fund (10)

1100 Regular Programs – Elementary / Secondary

	<u>Elementary</u>	<u>Secondary</u>	<u>Federal</u>	<u>Total</u>
100 Personnel Services – Salaries				
100 Personnel Services – Salaries	1,718,454.95	1,604,399.02	113,347.02	3,436,200.99
Total Personnel Services – Salaries	\$1,718,454.95	\$1,604,399.02	\$113,347.02	\$3,436,200.99
200 Personnel Services – Employee Benefits				
210 Group Insurance – Contracted Provider	440,463.00	456,682.14	41,294.42	938,439.56
220 Social Security Contributions	131,389.35	119,407.56	8,651.51	259,448.42
230 PSERS Retirement Contributions	536,072.35	381,079.68	28,051.95	945,203.98
240 Tuition Reimbursement	8,325.60	220.00		8,545.60
260 Workers' Compensation	9,437.48	8,811.10	159.07	18,407.65
280 Other Post-Employment Benefits (OPEB)	52,675.31	53,947.36		106,622.67
Total Personnel Services – Employee Benefits	\$1,178,363.09	\$1,020,147.84	\$78,156.95	\$2,276,667.88
300 Purchased Professional and Technical Services				
310 Official / Administrative Services	85,197.06	39,741.94		124,939.00
340 Technical Services	3,169.58	3,169.58		6,339.16
Total Purchased Professional and Technical Services	\$88,366.64	\$42,911.52		\$131,278.16
400 Purchased Property Services				
430 Repairs and Maintenance Services	397.75	1,091.12		1,488.87
Total Purchased Property Services	\$397.75	\$1,091.12		\$1,488.87
500 Other Purchased Services				
530 Communications	5,349.09	5,349.10		10,698.19
562 Tuition To Pennsylvania Charter Schools	213,820.50	196,719.84		410,540.34
568 Tuition To Private Residential Rehabilitative Institutions (PRRI) [In-State] and Detention Centers	14,454.23	14,454.23		28,908.46
580 Travel	135.93	23.00		158.93
Total Other Purchased Services	\$233,759.75	\$216,546.17		\$450,305.92
600 Supplies				
610 General Supplies	13,551.20	21,412.81		34,964.01
640 Books and Periodicals	37,455.00	65,711.74		103,166.74
650 Supplies & Fees – Technology Related	998.30	867.09		1,865.39
Total Supplies	\$52,004.50	\$87,991.64		\$139,996.14
700 Property				
750 Equipment – Original and Additional	58,075.24	77,485.07		135,560.31
760 Equipment – Replacement	4,542.97	7,145.15		11,688.12
Total Property	\$62,618.21	\$84,630.22		\$147,248.43
800 Other Objects				
810 Dues and Fees	1,400.00	(934.91)		465.09
840 Contingency	1,595.00			1,595.00
Total Other Objects	\$2,995.00	(\$934.91)		\$2,060.09
Total 1100 Regular Programs – Elementary / Secondary	\$3,336,959.89	\$3,056,782.62	\$191,503.97	\$6,585,246.48

LEA : 110179003 West Branch Area SD

Printed 10/31/2016 3:31:15 PM

Page - 4 of 26

General Fund (10)**1110 Regular Programs**

	<u>Elementary</u>	<u>Secondary</u>	<u>Federal</u>	<u>Total</u>
100 Personnel Services – Salaries				
100 Personnel Services – Salaries	1,718,454.95	1,604,399.02	113,347.02	3,436,200.99
Total Personnel Services – Salaries	\$1,718,454.95	\$1,604,399.02	\$113,347.02	\$3,436,200.99
200 Personnel Services – Employee Benefits				
210 Group Insurance – Contracted Provider	440,463.00	456,682.14	41,294.42	938,439.56
220 Social Security Contributions	131,389.35	119,407.56	8,651.51	259,448.42
230 PSERS Retirement Contributions	536,072.35	381,079.68	28,051.95	945,203.98
240 Tuition Reimbursement	8,325.60	220.00		8,545.60
260 Workers' Compensation	9,437.48	8,811.10	159.07	18,407.65
280 Other Post-Employment Benefits (OPEB)	52,675.31	53,947.36		106,622.67
Total Personnel Services – Employee Benefits	\$1,178,363.09	\$1,020,147.84	\$78,156.95	\$2,276,667.88
300 Purchased Professional and Technical Services				
310 Official / Administrative Services	85,197.06	39,741.94		124,939.00
340 Technical Services	3,169.58	3,169.58		6,339.16
Total Purchased Professional and Technical Services	\$88,366.64	\$42,911.52		\$131,278.16
400 Purchased Property Services				
430 Repairs and Maintenance Services	397.75	1,091.12		1,488.87
Total Purchased Property Services	\$397.75	\$1,091.12		\$1,488.87
500 Other Purchased Services				
530 Communications	5,349.09	5,349.10		10,698.19
562 Tuition To Pennsylvania Charter Schools	213,820.50	196,719.84		410,540.34
568 Tuition To Private Residential Rehabilitative Institutions (PRRI) [In-State] and Detention Centers	14,454.23	14,454.23		28,908.46
580 Travel	135.93	23.00		158.93
Total Other Purchased Services	\$233,759.75	\$216,546.17		\$450,305.92
600 Supplies				
610 General Supplies	13,551.20	21,412.81		34,964.01
640 Books and Periodicals	37,455.00	65,711.74		103,166.74
650 Supplies & Fees – Technology Related	998.30	867.09		1,865.39
Total Supplies	\$52,004.50	\$87,991.64		\$139,996.14
700 Property				
750 Equipment – Original and Additional	58,075.24	77,485.07		135,560.31
760 Equipment – Replacement	4,542.97	7,145.15		11,688.12
Total Property	\$62,618.21	\$84,630.22		\$147,248.43
800 Other Objects				
810 Dues and Fees	1,400.00	(934.91)		465.09
840 Contingency	1,595.00			1,595.00
Total Other Objects	\$2,995.00	(\$934.91)		\$2,060.09
Total 1110 Regular Programs	\$3,336,959.89	\$3,056,782.62	\$191,503.97	\$6,585,246.48

General Fund (10)

1200 Special Programs – Elementary / Secondary

	<u>Elementary</u>	<u>Secondary</u>	<u>Federal</u>	<u>Total</u>
100 Personnel Services – Salaries				
100 Personnel Services – Salaries	361,587.92	359,749.88	214,825.04	936,162.84
Total Personnel Services – Salaries	\$361,587.92	\$359,749.88	\$214,825.04	\$936,162.84
200 Personnel Services – Employee Benefits				
210 Group Insurance – Contracted Provider	76,163.35	99,160.57	79,791.34	255,115.26
220 Social Security Contributions	35,877.41	30,265.70	3,562.14	69,705.25
230 PSERS Retirement Contributions	86,247.12	86,390.40	53,282.95	225,920.47
260 Workers' Compensation	1,994.99	1,996.80		3,991.79
Total Personnel Services – Employee Benefits	\$200,282.87	\$217,813.47	\$136,636.43	\$554,732.77
300 Purchased Professional and Technical Services				
310 Official / Administrative Services	157,587.21	155,173.66		312,760.87
322 Professional Educational Services – lus	32,733.00	159,624.26		192,357.26
329 Professional Educational Services – Other	444.35	444.36		888.71
Total Purchased Professional and Technical Services	\$190,764.56	\$315,242.28		\$506,006.84
500 Other Purchased Services				
561 Tuition To Other School Districts Within the State	1,971.91	1,971.92		3,943.83
567 Tuition To Approved Private Schools (APS) and PA Chartered Schools for the Deaf and Blind	0.53	0.54		1.07
568 Tuition To Private Residential Rehabilitative Institutions (PRRI) [In-State] and Detention Centers	12,126.63	10,275.00		22,401.63
569 Tuition – Other	25,025.00	75,075.00		100,100.00
580 Travel		736.76		736.76
597 Direct Payments To Intermediate Units for Institutionalized Childrens' Program	887.15	887.16		1,774.31
Total Other Purchased Services	\$40,011.22	\$88,946.38		\$128,957.60
600 Supplies				
610 General Supplies	5,746.07	5,213.27		10,959.34
640 Books and Periodicals	326.93	2,171.69		2,498.62
Total Supplies	\$6,073.00	\$7,384.96		\$13,457.96
700 Property				
750 Equipment – Original and Additional	500.00			500.00
Total Property	\$500.00			\$500.00
800 Other Objects				
810 Dues and Fees	250.00	250.00		500.00
Total Other Objects	\$250.00	\$250.00		\$500.00
Total 1200 Special Programs – Elementary / Secondary	\$799,469.57	\$989,386.97	\$351,461.47	\$2,140,318.01

General Fund (10)

1210 Life Skills Support

	<u>Elementary</u>	<u>Secondary</u>	<u>Federal</u>	<u>Total</u>
100 Personnel Services – Salaries				
100 Personnel Services – Salaries	101,757.10	84,308.64	8,206.37	194,272.11
Total Personnel Services – Salaries	\$101,757.10	\$84,308.64	\$8,206.37	\$194,272.11
200 Personnel Services – Employee Benefits				
210 Group Insurance – Contracted Provider	17,391.23	24,833.36		42,224.59
220 Social Security Contributions	7,645.61	6,215.28	390.21	14,251.10
230 PSERS Retirement Contributions	24,258.53	19,823.59	1,888.78	45,970.90
260 Workers' Compensation	558.84	463.01		1,021.85
Total Personnel Services – Employee Benefits	\$49,854.21	\$51,335.24	\$2,278.99	\$103,468.44
300 Purchased Professional and Technical Services				
310 Official / Administrative Services	2,549.34	1,904.56		4,453.90
Total Purchased Professional and Technical Services	\$2,549.34	\$1,904.56		\$4,453.90
500 Other Purchased Services				
580 Travel		736.76		736.76
Total Other Purchased Services		\$736.76		\$736.76
600 Supplies				
610 General Supplies	2,255.44	1,817.61		4,073.05
640 Books and Periodicals		209.09		209.09
Total Supplies	\$2,255.44	\$2,026.70		\$4,282.14
Total 1210 Life Skills Support	\$156,416.09	\$140,311.90	\$10,485.36	\$307,213.35

General Fund (10)

1220 Sensory Support

	<u>Elementary</u>	<u>Secondary</u>	<u>Federal</u>	<u>Total</u>
100 Personnel Services – Salaries				
100 Personnel Services – Salaries	54,323.50	54,323.50	3,351.00	111,998.00
Total Personnel Services – Salaries	\$54,323.50	\$54,323.50	\$3,351.00	\$111,998.00
200 Personnel Services – Employee Benefits				
210 Group Insurance – Contracted Provider	20,078.21	20,078.21		40,156.42
220 Social Security Contributions	4,049.55	4,049.55		8,099.10
230 PSERS Retirement Contributions	13,326.84	13,326.84		26,653.68
260 Workers' Compensation	307.54	307.54		615.08
Total Personnel Services – Employee Benefits	\$37,762.14	\$37,762.14		\$75,524.28
600 Supplies				
610 General Supplies	733.38	96.96		830.34
Total Supplies	\$733.38	\$96.96		\$830.34
800 Other Objects				
810 Dues and Fees	250.00	250.00		500.00
Total Other Objects	\$250.00	\$250.00		\$500.00
Total 1220 Sensory Support	\$93,069.02	\$92,432.60	\$3,351.00	\$188,852.62

General Fund (10)

1230 Emotional Support

	<u>Elementary</u>	<u>Secondary</u>	<u>Federal</u>	<u>Total</u>
100 Personnel Services – Salaries				
100 Personnel Services – Salaries		19,616.65		19,616.65
Total Personnel Services – Salaries		\$19,616.65		\$19,616.65
200 Personnel Services – Employee Benefits				
210 Group Insurance – Contracted Provider		5,856.37		5,856.37
220 Social Security Contributions		1,465.01		1,465.01
230 PSERS Retirement Contributions		4,438.31		4,438.31
260 Workers' Compensation		107.73		107.73
Total Personnel Services – Employee Benefits		\$11,867.42		\$11,867.42
300 Purchased Professional and Technical Services				
322 Professional Educational Services – Ius	32,733.00	159,624.26		192,357.26
Total Purchased Professional and Technical Services	\$32,733.00	\$159,624.26		\$192,357.26
500 Other Purchased Services				
568 Tuition To Private Residential Rehabilitative Institutions (PRRI) [In-State] and Detention Centers	12,126.63	10,275.00		22,401.63
569 Tuition – Other	25,025.00	75,075.00		100,100.00
Total Other Purchased Services	\$37,151.63	\$85,350.00		\$122,501.63
Total 1230 Emotional Support	\$69,884.63	\$276,458.33		\$346,342.96

General Fund (10)

1240 Academic Support

	<u>Elementary</u>	<u>Secondary</u>	<u>Federal</u>	<u>Total</u>
100 Personnel Services – Salaries				
100 Personnel Services – Salaries	205,507.32	201,501.09	203,267.67	610,276.08
Total Personnel Services – Salaries	\$205,507.32	\$201,501.09	\$203,267.67	\$610,276.08
200 Personnel Services – Employee Benefits				
210 Group Insurance – Contracted Provider	38,693.91	48,392.63	79,791.34	166,877.88
220 Social Security Contributions	24,182.25	18,535.86	3,171.93	45,890.04
230 PSERS Retirement Contributions	48,661.75	48,801.66	51,394.17	148,857.58
260 Workers' Compensation	1,128.61	1,118.52		2,247.13
Total Personnel Services – Employee Benefits	\$112,666.52	\$116,848.67	\$134,357.44	\$363,872.63
300 Purchased Professional and Technical Services				
310 Official / Administrative Services	10,760.12	8,991.34		19,751.46
329 Professional Educational Services – Other	444.35	444.36		888.71
Total Purchased Professional and Technical Services	\$11,204.47	\$9,435.70		\$20,640.17
600 Supplies				
610 General Supplies	2,757.25	3,298.70		6,055.95
640 Books and Periodicals	326.93	1,962.60		2,289.53
Total Supplies	\$3,084.18	\$5,261.30		\$8,345.48
700 Property				
750 Equipment – Original and Additional	500.00			500.00
Total Property	\$500.00			\$500.00
Total 1240 Academic Support	\$332,962.49	\$333,046.76	\$337,625.11	\$1,003,634.36

General Fund (10)

	<u>Elementary</u>	<u>Secondary</u>	<u>Federal</u>	<u>Total</u>
1241 Learning Support – Public				
100 Personnel Services – Salaries				
100 Personnel Services – Salaries	201,588.59	197,582.35	203,267.67	602,438.61
Total Personnel Services – Salaries	\$201,588.59	\$197,582.35	\$203,267.67	\$602,438.61
200 Personnel Services – Employee Benefits				
210 Group Insurance – Contracted Provider	37,446.21	47,144.92	79,791.34	164,382.47
220 Social Security Contributions	23,890.50	18,244.11	3,171.93	45,306.54
230 PSERS Retirement Contributions	47,727.21	47,867.11	51,394.17	146,988.49
260 Workers' Compensation	1,107.09	1,097.00		2,204.09
Total Personnel Services – Employee Benefits	\$110,171.01	\$114,353.14	\$134,357.44	\$358,881.59
300 Purchased Professional and Technical Services				
310 Official / Administrative Services	10,760.12	8,991.34		19,751.46
329 Professional Educational Services – Other	444.35	444.36		888.71
Total Purchased Professional and Technical Services	\$11,204.47	\$9,435.70		\$20,640.17
600 Supplies				
610 General Supplies	2,657.25	3,110.70		5,767.95
640 Books and Periodicals	326.93	1,962.60		2,289.53
Total Supplies	\$2,984.18	\$5,073.30		\$8,057.48
700 Property				
750 Equipment – Original and Additional	500.00			500.00
Total Property	\$500.00			\$500.00
Total 1241 Learning Support – Public	\$326,448.25	\$326,444.49	\$337,625.11	\$990,517.85

General Fund (10)

1243 Gifted Support

100 Personnel Services – Salaries

	<u>Elementary</u>	<u>Secondary</u>	<u>Federal</u>	<u>Total</u>
100 Personnel Services – Salaries	3,918.73	3,918.74		7,837.47
Total Personnel Services – Salaries	\$3,918.73	\$3,918.74		\$7,837.47

200 Personnel Services – Employee Benefits

210 Group Insurance – Contracted Provider	1,247.70	1,247.71		2,495.41
220 Social Security Contributions	291.75	291.75		583.50
230 PSERS Retirement Contributions	934.54	934.55		1,869.09
260 Workers' Compensation	21.52	21.52		43.04
Total Personnel Services – Employee Benefits	\$2,495.51	\$2,495.53		\$4,991.04

600 Supplies

610 General Supplies	100.00	188.00		288.00
Total Supplies	\$100.00	\$188.00		\$288.00
Total 1243 Gifted Support	\$6,514.24	\$6,602.27		\$13,116.51

General Fund (10)

	<u>Elementary</u>	<u>Secondary</u>	<u>Federal</u>	<u>Total</u>
1290 Special Programs - Other Support				
300 <u>Purchased Professional and Technical Services</u>				
310 Official / Administrative Services	144,277.75	144,277.76		288,555.51
Total Purchased Professional and Technical Services	\$144,277.75	\$144,277.76		\$288,555.51
500 <u>Other Purchased Services</u>				
561 Tuition To Other School Districts Within the State	1,971.91	1,971.92		3,943.83
567 Tuition To Approved Private Schools (APS) and PA Chartered Schools for the Deaf and Blind	0.53	0.54		1.07
597 Direct Payments To Intermediate Units for Institutionalized Childrens' Program	887.15	887.16		1,774.31
Total Other Purchased Services	\$2,859.59	\$2,859.62		\$5,719.21
Total 1290 Special Programs - Other Support	\$147,137.34	\$147,137.38		\$294,274.72

General Fund (10)

1300 Vocational Education

100 Personnel Services – Salaries

100 Personnel Services – Salaries

Total Personnel Services – Salaries

200 Personnel Services – Employee Benefits

210 Group Insurance – Contracted Provider

220 Social Security Contributions

230 PSERS Retirement Contributions

260 Workers' Compensation

Total Personnel Services – Employee Benefits

500 Other Purchased Services

561 Tuition To Other School Districts Within the State

564 Tuition To Career and Technology Centers

Total Other Purchased Services

600 Supplies

610 General Supplies

Total Supplies

Total 1300 Vocational Education

	<u>Elementary</u>	<u>Secondary</u>	<u>Federal</u>	<u>Total</u>
		99,915.01		99,915.01
		\$99,915.01		\$99,915.01
		15,875.10		15,875.10
		7,523.50		7,523.50
		23,825.70		23,825.70
		548.71		548.71
		\$47,773.01		\$47,773.01
		803.10		803.10
		578,659.87		578,659.87
		\$579,462.97		\$579,462.97
		101.42		101.42
		\$101.42		\$101.42
		\$727,252.41		\$727,252.41

General Fund (10)

	<u>Elementary</u>	<u>Secondary</u>	<u>Federal</u>	<u>Total</u>
1400 Other Instructional Programs – Elementary / Secondary				
100 Personnel Services – Salaries				
100 Personnel Services – Salaries	2,508.00	34,735.82		37,243.82
Total Personnel Services – Salaries	\$2,508.00	\$34,735.82		\$37,243.82
200 Personnel Services – Employee Benefits				
210 Group Insurance – Contracted Provider		144.01		144.01
220 Social Security Contributions	190.80	2,641.95		2,832.75
230 PSERS Retirement Contributions	598.05	8,079.56		8,677.61
260 Workers' Compensation	13.77	190.77		204.54
Total Personnel Services – Employee Benefits	\$802.62	\$11,056.29		\$11,858.91
300 Purchased Professional and Technical Services				
310 Official / Administrative Services		7,325.00		7,325.00
Total Purchased Professional and Technical Services		\$7,325.00		\$7,325.00
400 Purchased Property Services				
430 Repairs and Maintenance Services		530.80		530.80
Total Purchased Property Services		\$530.80		\$530.80
500 Other Purchased Services				
561 Tuition To Other School Districts Within the State	22,522.93	22,522.94		45,045.87
568 Tuition To Private Residential Rehabilitative Institutions (PRRI) [In-State] and Detention Centers	3,957.50	3,957.50		7,915.00
580 Travel	350.46	1,574.39		1,924.85
Total Other Purchased Services	\$26,830.89	\$28,054.83		\$54,885.72
600 Supplies				
620 Energy		435.19		435.19
630 Food		223.90		223.90
640 Books and Periodicals		155.80		155.80
Total Supplies		\$814.89		\$814.89
800 Other Objects				
810 Dues and Fees		31,047.50		31,047.50
Total Other Objects		\$31,047.50		\$31,047.50
Total 1400 Other Instructional Programs – Elementary / Secondary	\$30,141.51	\$113,565.13		\$143,706.64

General Fund (10)

1410 Drivers' Education

	<u>Elementary</u>	<u>Secondary</u>	<u>Federal</u>	<u>Total</u>
100 Personnel Services – Salaries				
100 Personnel Services – Salaries		22,195.82		22,195.82
Total Personnel Services – Salaries		\$22,195.82		\$22,195.82
200 Personnel Services – Employee Benefits				
210 Group Insurance – Contracted Provider		144.01		144.01
220 Social Security Contributions		1,688.00		1,688.00
230 PSERS Retirement Contributions		5,089.31		5,089.31
260 Workers' Compensation		121.90		121.90
Total Personnel Services – Employee Benefits		\$7,043.22		\$7,043.22
400 Purchased Property Services				
430 Repairs and Maintenance Services		530.80		530.80
Total Purchased Property Services		\$530.80		\$530.80
600 Supplies				
620 Energy		435.19		435.19
640 Books and Periodicals		155.80		155.80
Total Supplies		\$590.99		\$590.99
800 Other Objects				
810 Dues and Fees		(8,750.00)		(8,750.00)
Total Other Objects		(\$8,750.00)		(\$8,750.00)
Total 1410 Drivers' Education		\$21,610.83		\$21,610.83

General Fund (10)

1430 Homebound Instruction

100 Personnel Services – Salaries

	<u>Elementary</u>	<u>Secondary</u>	<u>Federal</u>	<u>Total</u>
100 Personnel Services – Salaries	2,508.00	12,540.00		15,048.00
Total Personnel Services – Salaries	\$2,508.00	\$12,540.00		\$15,048.00

200 Personnel Services – Employee Benefits

220 Social Security Contributions	190.80	953.95		1,144.75
230 PSERS Retirement Contributions	598.05	2,990.25		3,588.30
260 Workers’ Compensation	13.77	68.87		82.64
Total Personnel Services – Employee Benefits	\$802.62	\$4,013.07		\$4,815.69

500 Other Purchased Services

580 Travel	350.46	1,574.39		1,924.85
Total Other Purchased Services	\$350.46	\$1,574.39		\$1,924.85
Total 1430 Homebound Instruction	\$3,661.08	\$18,127.46		\$21,788.54

General Fund (10)

	<u>Elementary</u>	<u>Secondary</u>	<u>Federal</u>	<u>Total</u>
1440 Alternative Regular Education Programs				
300 <u>Purchased Professional and Technical Services</u>				
310 Official / Administrative Services		7,325.00		7,325.00
Total Purchased Professional and Technical Services		\$7,325.00		\$7,325.00
500 <u>Other Purchased Services</u>				
561 Tuition To Other School Districts Within the State	22,522.93	22,522.94		45,045.87
568 Tuition To Private Residential Rehabilitative Institutions (PRRI) [In-State] and Detention Centers	3,957.50	3,957.50		7,915.00
Total Other Purchased Services	\$26,480.43	\$26,480.44		\$52,960.87
800 <u>Other Objects</u>				
810 Dues and Fees		39,797.50		39,797.50
Total Other Objects		\$39,797.50		\$39,797.50
Total 1440 Alternative Regular Education Programs	\$26,480.43	\$73,602.94		\$100,083.37

General Fund (10)

1441 Adjudicated / Court-Placed Programs

500 Other Purchased Services

	<u>Elementary</u>	<u>Secondary</u>	<u>Federal</u>	<u>Total</u>
561 Tuition To Other School Districts Within the State	22,522.93	22,522.94		45,045.87
568 Tuition To Private Residential Rehabilitative Institutions (PRRI) [In-State] and Detention Centers	3,957.50	3,957.50		7,915.00
Total Other Purchased Services	\$26,480.43	\$26,480.44		\$52,960.87
Total 1441 Adjudicated / Court-Placed Programs	\$26,480.43	\$26,480.44		\$52,960.87

General Fund (10)

	<u>Elementary</u>	<u>Secondary</u>	<u>Federal</u>	<u>Total</u>
1442 Alternative Education Programs				
300 <u>Purchased Professional and Technical Services</u>				
310 Official / Administrative Services		7,325.00		7,325.00
Total Purchased Professional and Technical Services		\$7,325.00		\$7,325.00
800 <u>Other Objects</u>				
810 Dues and Fees		39,797.50		39,797.50
Total Other Objects		\$39,797.50		\$39,797.50
Total 1442 Alternative Education Programs		\$47,122.50		\$47,122.50

LEA : 110179003 West Branch Area SD

Printed 10/31/2016 3:31:15 PM

General Fund (10)

1490 Additional Other Instructional Programs

Elementary

Secondary

Federal

Total

600 Supplies

630 Food

223.90

223.90

Total Supplies

\$223.90

\$223.90

Total 1490 Additional Other Instructional Programs

\$223.90

\$223.90

General Fund (10)

1800 Pre-Kindergarten

	<u>Elementary</u>	<u>Secondary</u>	<u>Federal</u>	<u>Total</u>
100 Personnel Services – Salaries				
100 Personnel Services – Salaries				11,409.94
Total Personnel Services – Salaries				\$11,409.94
200 Personnel Services – Employee Benefits				
220 Social Security Contributions				868.44
230 PSERS Retirement Contributions				2,963.42
Total Personnel Services – Employee Benefits				\$3,831.86
300 Purchased Professional and Technical Services				
310 Official / Administrative Services				5,881.38
390 Other Purchased Professional and Technical Services				508.31
Total Purchased Professional and Technical Services				\$6,389.69
400 Purchased Property Services				
450 Construction Services				6,783.55
Total Purchased Property Services				\$6,783.55
500 Other Purchased Services				
510 Student Transportation Services				3,000.25
580 Travel				2,016.31
591 Services Purchased Locally				701.56
Total Other Purchased Services				\$5,718.12
600 Supplies				
610 General Supplies			28,372.51	36,138.98
630 Food				139.72
640 Books and Periodicals			3,317.52	4,854.01
Total Supplies			\$31,690.03	\$41,132.71
700 Property				
750 Equipment – Original and Additional			8,148.89	23,732.70
Total Property			\$8,148.89	\$23,732.70
Total 1800 Pre-Kindergarten			\$39,838.92	\$98,998.57

General Fund (10)

1801 Pre-K Instruction

	<u>Elementary</u>	<u>Secondary</u>	<u>Federal</u>	<u>Total</u>
100 Personnel Services – Salaries				
100 Personnel Services – Salaries				11,409.94
Total Personnel Services – Salaries				\$11,409.94
200 Personnel Services – Employee Benefits				
220 Social Security Contributions				868.44
230 PSERS Retirement Contributions				2,963.42
Total Personnel Services – Employee Benefits				\$3,831.86
300 Purchased Professional and Technical Services				
310 Official / Administrative Services				345.63
Total Purchased Professional and Technical Services				\$345.63
700 Property				
750 Equipment – Original and Additional			4,189.00	4,189.00
Total Property			\$4,189.00	\$4,189.00
Total 1801 Pre-K Instruction			\$4,189.00	\$19,776.43

General Fund (10)

1802 Pre-K Administrative Support

Elementary

Secondary

Federal

Total

300 Purchased Professional and Technical Services

390 Other Purchased Professional and Technical Services

508.31

Total Purchased Professional and Technical Services

\$508.31

Total 1802 Pre-K Administrative Support

\$508.31

General Fund (10)

1803 Pre-K Operations and Maintenance

Elementary

Secondary

Federal

Total

300 Purchased Professional and Technical Services

310 Official / Administrative Services

5,535.75

Total Purchased Professional and Technical Services

\$5,535.75

400 Purchased Property Services

450 Construction Services

6,783.55

Total Purchased Property Services

\$6,783.55

500 Other Purchased Services

580 Travel

2,016.31

Total Other Purchased Services

\$2,016.31

600 Supplies

610 General Supplies

28,372.51

28,372.51

640 Books and Periodicals

3,317.52

4,854.01

Total Supplies

\$31,690.03

\$33,226.52

700 Property

750 Equipment – Original and Additional

3,959.89

19,543.70

Total Property

\$3,959.89

\$19,543.70

Total 1803 Pre-K Operations and Maintenance

\$35,649.92

\$67,105.83

General Fund (10)

	<u>Elementary</u>	<u>Secondary</u>	<u>Federal</u>	<u>Total</u>
1804 Pre-K Student Transportation				
500 <u>Other Purchased Services</u>				
510 Student Transportation Services				3,000.25
Total Other Purchased Services				\$3,000.25
600 <u>Supplies</u>				
610 General Supplies				7,766.47
Total Supplies				\$7,766.47
Total 1804 Pre-K Student Transportation				\$10,766.72

General Fund (10)

1805 Pre-K Food Services

Elementary

Secondary

Federal

Total

500 Other Purchased Services

591 Services Purchased Locally

701.56

Total Other Purchased Services

\$701.56

600 Supplies

630 Food

139.72

Total Supplies

\$139.72

Total 1805 Pre-K Food Services

\$841.28

General Fund (10)

2000 Support Services

Total

100 Personnel Services – Salaries

100 Personnel Services – Salaries 1,699,843.71

Total Personnel Services – Salaries \$1,699,843.71

200 Personnel Services – Employee Benefits

210 Group Insurance – Contracted Provider 538,726.84

220 Social Security Contributions 127,384.72

230 PSERS Retirement Contributions 390,727.24

250 Unemployment Compensation 612.19

260 Workers' Compensation 9,038.27

Total Personnel Services – Employee Benefits \$1,066,489.26

300 Purchased Professional and Technical Services

310 Official / Administrative Services 168,328.54

324 Professional Educational Services – Employee Training and Development Services 1,167.12

329 Professional Educational Services – Other 280.00

330 Other Professional Services 111,352.36

350 Security / Safety Services 325.85

Total Purchased Professional and Technical Services \$281,453.87

400 Purchased Property Services

410 Cleaning Services 30,927.53

420 Utility Services 250,179.77

430 Repairs and Maintenance Services 105,179.11

440 Rentals 1,449.35

Total Purchased Property Services \$387,735.76

500 Other Purchased Services

513 Contracted Carriers 848,593.50

516 Student Transportation Services From the IU 7,999.64

520 Insurance – General 618.75

523 General Property and Liability Insurance 64,886.00

530 Communications 25,772.32

549 Other Advertising/Public Relations 2,185.95

580 Travel 23,474.20

Total Other Purchased Services \$973,530.36

600 Supplies

610 General Supplies 177,552.46

620 Energy 62,916.06

630 Food 1,286.60

640 Books and Periodicals 9,312.27

Total Supplies \$251,067.39

700 Property

750 Equipment – Original and Additional 47,478.60

760 Equipment – Replacement 27,560.21

Total Property \$75,038.81

LEA : 110179003 West Branch Area SD

Printed 10/31/2016 3:31:19 PM

General Fund (10)

2000 Support Services

Total

800 Other Objects

810 Dues and Fees	12,793.94
820 Claims and Judgments Against the LEA	25,540.89
840 Contingency	3,358.15
890 Miscellaneous Expenditures	3,329.36

Total Other Objects	\$45,022.34
----------------------------	--------------------

Total 2000 Support Services	\$4,780,181.50
------------------------------------	-----------------------

General Fund (10)

2100 Support Services – Students

100 Personnel Services – Salaries

	<u>Elementary</u>	<u>Secondary</u>	<u>Federal</u>	<u>Total</u>
100 Personnel Services – Salaries	56,319.84	155,777.77		268,475.40
Total Personnel Services – Salaries	\$56,319.84	\$155,777.77		\$268,475.40

200 Personnel Services – Employee Benefits

210 Group Insurance – Contracted Provider	7,331.81	58,929.31		84,692.33
220 Social Security Contributions	4,250.19	11,618.81		20,099.61
230 PSERS Retirement Contributions	13,429.98	37,146.46		64,020.24
260 Workers' Compensation	309.30	935.35		1,554.26
Total Personnel Services – Employee Benefits	\$25,321.28	\$108,629.93		\$170,366.44

300 Purchased Professional and Technical Services

310 Official / Administrative Services	13,200.00	13,200.00		26,400.00
Total Purchased Professional and Technical Services	\$13,200.00	\$13,200.00		\$26,400.00

500 Other Purchased Services

530 Communications	47.01	2,127.92		2,174.93
580 Travel		435.32		469.45
Total Other Purchased Services	\$47.01	\$2,563.24		\$2,644.38

600 Supplies

610 General Supplies	335.89	75.60		411.49
640 Books and Periodicals	1,352.44	1,352.45		2,704.89
Total Supplies	\$1,688.33	\$1,428.05		\$3,116.38

800 Other Objects

810 Dues and Fees	340.44	345.00		685.44
Total Other Objects	\$340.44	\$345.00		\$685.44

Total 2100 Support Services – Students

Total 2100 Support Services – Students	\$96,916.90	\$281,943.99		\$471,688.04
---	--------------------	---------------------	--	---------------------

General Fund (10)

	<u>Elementary</u>	<u>Secondary</u>	<u>Federal</u>	<u>Total</u>
2120 Guidance Services				
100 Personnel Services – Salaries				
100 Personnel Services – Salaries	52,081.00	151,538.93		203,619.93
Total Personnel Services – Salaries	\$52,081.00	\$151,538.93		\$203,619.93
200 Personnel Services – Employee Benefits				
210 Group Insurance – Contracted Provider	7,055.45	58,652.94		65,708.39
220 Social Security Contributions	3,929.52	11,298.13		15,227.65
230 PSERS Retirement Contributions	12,419.19	36,135.67		48,554.86
260 Workers' Compensation	286.02	912.07		1,198.09
Total Personnel Services – Employee Benefits	\$23,690.18	\$106,998.81		\$130,688.99
500 Other Purchased Services				
530 Communications		2,080.90		2,080.90
580 Travel		435.32		435.32
Total Other Purchased Services		\$2,516.22		\$2,516.22
600 Supplies				
610 General Supplies	335.89	75.60		411.49
Total Supplies	\$335.89	\$75.60		\$411.49
800 Other Objects				
810 Dues and Fees	340.44	345.00		685.44
Total Other Objects	\$340.44	\$345.00		\$685.44
Total 2120 Guidance Services	\$76,447.51	\$261,474.56		\$337,922.07

General Fund (10)

2130 Attendance Services

Elementary

Secondary

Federal

Total

100 Personnel Services – Salaries

100 Personnel Services – Salaries

56,377.79

Total Personnel Services – Salaries

\$56,377.79

200 Personnel Services – Employee Benefits

210 Group Insurance – Contracted Provider

18,431.21

220 Social Security Contributions

4,230.61

230 PSERS Retirement Contributions

13,443.80

260 Workers' Compensation

309.61

Total Personnel Services – Employee Benefits

\$36,415.23

500 Other Purchased Services

580 Travel

34.13

Total Other Purchased Services

\$34.13

Total 2130 Attendance Services

\$92,827.15

General Fund (10)

	<u>Elementary</u>	<u>Secondary</u>	<u>Federal</u>	<u>Total</u>
2140 Psychological Services				
100 Personnel Services – Salaries				
100 Personnel Services – Salaries	4,238.84	4,238.84		8,477.68
Total Personnel Services – Salaries	\$4,238.84	\$4,238.84		\$8,477.68
200 Personnel Services – Employee Benefits				
210 Group Insurance – Contracted Provider	276.36	276.37		552.73
220 Social Security Contributions	320.67	320.68		641.35
230 PSERS Retirement Contributions	1,010.79	1,010.79		2,021.58
260 Workers' Compensation	23.28	23.28		46.56
Total Personnel Services – Employee Benefits	\$1,631.10	\$1,631.12		\$3,262.22
300 Purchased Professional and Technical Services				
310 Official / Administrative Services	13,200.00	13,200.00		26,400.00
Total Purchased Professional and Technical Services	\$13,200.00	\$13,200.00		\$26,400.00
500 Other Purchased Services				
530 Communications	47.01	47.02		94.03
Total Other Purchased Services	\$47.01	\$47.02		\$94.03
600 Supplies				
640 Books and Periodicals	1,352.44	1,352.45		2,704.89
Total Supplies	\$1,352.44	\$1,352.45		\$2,704.89
Total 2140 Psychological Services	\$20,469.39	\$20,469.43		\$40,938.82

General Fund (10)

	<u>Elementary</u>	<u>Secondary</u>	<u>Federal</u>	<u>Total</u>
2200 Support Services – Instructional Staff				
100 Personnel Services – Salaries				
100 Personnel Services – Salaries	152,240.63	97,361.54	68,619.08	318,221.25
Total Personnel Services – Salaries	\$152,240.63	\$97,361.54	\$68,619.08	\$318,221.25
200 Personnel Services – Employee Benefits				
210 Group Insurance – Contracted Provider	40,010.34	22,996.25	727.97	63,734.56
220 Social Security Contributions	14,600.82	8,401.20	914.54	23,916.56
230 PSERS Retirement Contributions	37,309.61	23,569.40	15,751.21	76,630.22
260 Workers' Compensation	836.08	534.70		1,370.78
Total Personnel Services – Employee Benefits	\$92,756.85	\$55,501.55	\$17,393.72	\$165,652.12
300 Purchased Professional and Technical Services				
310 Official / Administrative Services	19,076.52	12,944.96	32,361.34	64,382.82
324 Professional Educational Services – Employee Training and Development Services			1,167.12	1,167.12
329 Professional Educational Services – Other	140.00	140.00		280.00
Total Purchased Professional and Technical Services	\$19,216.52	\$13,084.96	\$33,528.46	\$65,829.94
500 Other Purchased Services				
530 Communications	878.28	878.29		1,756.57
580 Travel	10,139.13	5,849.23	2,371.96	18,360.32
Total Other Purchased Services	\$11,017.41	\$6,727.52	\$2,371.96	\$20,116.89
600 Supplies				
610 General Supplies	20,448.61	22,226.18	5,454.80	48,129.59
640 Books and Periodicals	3,496.62	1,580.32		5,076.94
Total Supplies	\$23,945.23	\$23,806.50	\$5,454.80	\$53,206.53
700 Property				
750 Equipment – Original and Additional	9,979.12	3,272.24		13,251.36
760 Equipment – Replacement	9,247.81	9,247.82		18,495.63
Total Property	\$19,226.93	\$12,520.06		\$31,746.99
800 Other Objects				
840 Contingency	11.00	11.00		22.00
Total Other Objects	\$11.00	\$11.00		\$22.00
Total 2200 Support Services – Instructional Staff	\$318,414.57	\$209,013.13	\$127,368.02	\$654,795.72

General Fund (10)

2210 Supervision of Educational Media Services	<u>Elementary</u>	<u>Secondary</u>	<u>Federal</u>	<u>Total</u>
100 Personnel Services – Salaries				
100 Personnel Services – Salaries	45,953.50	45,953.50		91,907.00
Total Personnel Services – Salaries	\$45,953.50	\$45,953.50		\$91,907.00
200 Personnel Services – Employee Benefits				
210 Group Insurance – Contracted Provider	6,490.51	6,490.52		12,981.03
220 Social Security Contributions	3,466.64	3,466.65		6,933.29
230 PSERS Retirement Contributions	10,958.02	10,958.02		21,916.04
260 Workers' Compensation	252.37	252.37		504.74
Total Personnel Services – Employee Benefits	\$21,167.54	\$21,167.56		\$42,335.10
500 Other Purchased Services				
530 Communications	187.35	187.36		374.71
Total Other Purchased Services	\$187.35	\$187.36		\$374.71
600 Supplies				
610 General Supplies	2,952.87	2,952.87		5,905.74
Total Supplies	\$2,952.87	\$2,952.87		\$5,905.74
Total 2210 Supervision of Educational Media Services	\$70,261.26	\$70,261.29		\$140,522.55

General Fund (10)

2211 Supervision of Educational Media Services – Head of Component

	<u>Elementary</u>	<u>Secondary</u>	<u>Federal</u>	<u>Total</u>
100 Personnel Services – Salaries				
100 Personnel Services – Salaries	45,953.50	45,953.50		91,907.00
Total Personnel Services – Salaries	\$45,953.50	\$45,953.50		\$91,907.00
200 Personnel Services – Employee Benefits				
210 Group Insurance – Contracted Provider	6,490.51	6,490.52		12,981.03
220 Social Security Contributions	3,466.64	3,466.65		6,933.29
230 PSERS Retirement Contributions	10,958.02	10,958.02		21,916.04
260 Workers' Compensation	252.37	252.37		504.74
Total Personnel Services – Employee Benefits	\$21,167.54	\$21,167.56		\$42,335.10
500 Other Purchased Services				
530 Communications	187.35	187.36		374.71
Total Other Purchased Services	\$187.35	\$187.36		\$374.71
600 Supplies				
610 General Supplies	2,952.87	2,952.87		5,905.74
Total Supplies	\$2,952.87	\$2,952.87		\$5,905.74
Total 2211 Supervision of Educational Media Services – Head of Component	\$70,261.26	\$70,261.29		\$140,522.55

General Fund (10)

2220 Technology Support Services

200 Personnel Services – Employee Benefits

210 Group Insurance – Contracted Provider

Total Personnel Services – Employee Benefits

500 Other Purchased Services

530 Communications

Total Other Purchased Services

600 Supplies

610 General Supplies

Total Supplies

700 Property

750 Equipment – Original and Additional

760 Equipment – Replacement

Total Property

Total 2220 Technology Support Services

	<u>Elementary</u>	<u>Secondary</u>	<u>Federal</u>	<u>Total</u>
	153.37	153.38		306.75
	\$153.37	\$153.38		\$306.75
	155.58	155.58		311.16
	\$155.58	\$155.58		\$311.16
	7,364.53	7,364.54		14,729.07
	\$7,364.53	\$7,364.54		\$14,729.07
	9,192.02	2,485.13		11,677.15
	9,247.81	9,247.82		18,495.63
	\$18,439.83	\$11,732.95		\$30,172.78
	\$26,113.31	\$19,406.45		\$45,519.76

General Fund (10)

2250 School Library Services

	<u>Elementary</u>	<u>Secondary</u>	<u>Federal</u>	<u>Total</u>
100 Personnel Services – Salaries				
100 Personnel Services – Salaries	72,303.03	17,423.92		89,726.95
Total Personnel Services – Salaries	\$72,303.03	\$17,423.92		\$89,726.95
200 Personnel Services – Employee Benefits				
210 Group Insurance – Contracted Provider	16,994.91			16,994.91
220 Social Security Contributions	5,411.23	1,325.54		6,736.77
230 PSERS Retirement Contributions	17,241.13	4,154.87		21,396.00
260 Workers' Compensation	397.08	95.69		492.77
Total Personnel Services – Employee Benefits	\$40,044.35	\$5,576.10		\$45,620.45
300 Purchased Professional and Technical Services				
310 Official / Administrative Services	6,131.56			6,131.56
Total Purchased Professional and Technical Services	\$6,131.56			\$6,131.56
600 Supplies				
610 General Supplies	2,974.35	4,698.67		7,673.02
640 Books and Periodicals	3,496.62	1,580.32		5,076.94
Total Supplies	\$6,470.97	\$6,278.99		\$12,749.96
Total 2250 School Library Services	\$124,949.91	\$29,279.01		\$154,228.92

General Fund (10)

2260 Instruction and Curriculum Development Services

	<u>Elementary</u>	<u>Secondary</u>	<u>Federal</u>	<u>Total</u>
100 Personnel Services – Salaries				
100 Personnel Services – Salaries	11,125.58	11,125.59		22,251.17
Total Personnel Services – Salaries	\$11,125.58	\$11,125.59		\$22,251.17
200 Personnel Services – Employee Benefits				
210 Group Insurance – Contracted Provider	8,785.29	8,785.29		17,570.58
220 Social Security Contributions	830.39	830.39		1,660.78
230 PSERS Retirement Contributions	2,623.17	2,623.18		5,246.35
260 Workers' Compensation	61.10	61.10		122.20
Total Personnel Services – Employee Benefits	\$12,299.95	\$12,299.96		\$24,599.91
500 Other Purchased Services				
530 Communications	535.35	535.35		1,070.70
580 Travel	667.17	667.17		1,334.34
Total Other Purchased Services	\$1,202.52	\$1,202.52		\$2,405.04
600 Supplies				
610 General Supplies	2,679.52	2,679.53		5,359.05
Total Supplies	\$2,679.52	\$2,679.53		\$5,359.05
700 Property				
750 Equipment – Original and Additional	787.10	787.11		1,574.21
Total Property	\$787.10	\$787.11		\$1,574.21
800 Other Objects				
840 Contingency	11.00	11.00		22.00
Total Other Objects	\$11.00	\$11.00		\$22.00
Total 2260 Instruction and Curriculum Development Services	\$28,105.67	\$28,105.71		\$56,211.38

General Fund (10)

2270 Instructional Staff Professional Development Services	<u>Elementary</u>	<u>Secondary</u>	<u>Federal</u>	<u>Total</u>
100 Personnel Services – Salaries				
100 Personnel Services – Salaries	22,858.52	22,858.53	68,619.08	114,336.13
Total Personnel Services – Salaries	\$22,858.52	\$22,858.53	\$68,619.08	\$114,336.13
200 Personnel Services – Employee Benefits				
210 Group Insurance – Contracted Provider	7,586.26	7,567.06	727.97	15,881.29
220 Social Security Contributions	4,892.56	2,778.62	914.54	8,585.72
230 PSERS Retirement Contributions	6,487.29	5,833.33	15,751.21	28,071.83
260 Workers' Compensation	125.53	125.54		251.07
Total Personnel Services – Employee Benefits	\$19,091.64	\$16,304.55	\$17,393.72	\$52,789.91
300 Purchased Professional and Technical Services				
310 Official / Administrative Services	12,794.96	12,794.96	32,361.34	57,951.26
324 Professional Educational Services – Employee Training and Development Services			1,167.12	1,167.12
329 Professional Educational Services – Other	140.00	140.00		280.00
Total Purchased Professional and Technical Services	\$12,934.96	\$12,934.96	\$33,528.46	\$59,398.38
500 Other Purchased Services				
580 Travel	9,471.96	5,182.06	2,371.96	17,025.98
Total Other Purchased Services	\$9,471.96	\$5,182.06	\$2,371.96	\$17,025.98
600 Supplies				
610 General Supplies		53.23	5,454.80	5,508.03
Total Supplies		\$53.23	\$5,454.80	\$5,508.03
Total 2270 Instructional Staff Professional Development Services	\$64,357.08	\$57,333.33	\$127,368.02	\$249,058.43

General Fund (10)

	<u>Elementary</u>	<u>Secondary</u>	<u>Federal</u>	<u>Total</u>
2290 Other Instructional Staff Services				
300 <u>Purchased Professional and Technical Services</u>				
310 Official / Administrative Services	150.00	150.00		300.00
Total Purchased Professional and Technical Services	\$150.00	\$150.00		\$300.00
600 <u>Supplies</u>				
610 General Supplies	4,477.34	4,477.34		8,954.68
Total Supplies	\$4,477.34	\$4,477.34		\$8,954.68
Total 2290 Other Instructional Staff Services	\$4,627.34	\$4,627.34		\$9,254.68

LEA : 110179003 West Branch Area SD

Printed 10/31/2016 3:31:19 PM

Page - 15 of 49

General Fund (10)

	<u>Elementary</u>	<u>Secondary</u>	<u>Federal</u>	<u>Total</u>
2300 Support Services – Administration				
100 Personnel Services – Salaries				
100 Personnel Services – Salaries	135,097.03	142,899.84		475,092.38
Total Personnel Services – Salaries	\$135,097.03	\$142,899.84		\$475,092.38
200 Personnel Services – Employee Benefits				
210 Group Insurance – Contracted Provider	50,756.62	48,951.42		138,609.52
220 Social Security Contributions	10,100.40	10,700.00		35,596.94
230 PSERS Retirement Contributions	32,215.07	33,412.63		99,607.93
260 Workers' Compensation	1,526.71			2,609.12
Total Personnel Services – Employee Benefits	\$94,598.80	\$93,064.05		\$276,423.51
300 Purchased Professional and Technical Services				
310 Official / Administrative Services				13,625.51
330 Other Professional Services				34,647.04
Total Purchased Professional and Technical Services				\$48,272.55
500 Other Purchased Services				
520 Insurance – General		123.75		371.25
530 Communications	4,994.71	7,283.11		17,121.25
549 Other Advertising/Public Relations				1,188.95
580 Travel	1,099.17			3,658.66
Total Other Purchased Services	\$6,093.88	\$7,406.86		\$22,340.11
600 Supplies				
610 General Supplies	24,688.87	24,854.98		53,484.48
630 Food	1,173.50	113.10		1,286.60
640 Books and Periodicals	1,191.95	182.49		1,530.44
Total Supplies	\$27,054.32	\$25,150.57		\$56,301.52
700 Property				
750 Equipment – Original and Additional	5,390.02	6,901.08		16,110.44
760 Equipment – Replacement		41.96		41.96
Total Property	\$5,390.02	\$6,943.04		\$16,152.40
800 Other Objects				
810 Dues and Fees	1,524.00	1,677.95		10,736.50
820 Claims and Judgments Against the LEA				25,540.89
840 Contingency	1,528.97	770.75		3,336.15
890 Miscellaneous Expenditures	1,866.09	1,219.52		3,329.36
Total Other Objects	\$4,919.06	\$3,668.22		\$42,942.90
Total 2300 Support Services – Administration	\$273,153.11	\$279,132.58		\$937,525.37

General Fund (10)

2310 Board Services

Elementary Secondary Federal Total

100	<u>Personnel Services – Salaries</u>				
	100 Personnel Services – Salaries				2,600.00
Total Personnel Services – Salaries					\$2,600.00
200	<u>Personnel Services – Employee Benefits</u>				
	220 Social Security Contributions				194.50
	230 PSERS Retirement Contributions				620.02
	260 Workers’ Compensation				14.28
Total Personnel Services – Employee Benefits					\$828.80
300	<u>Purchased Professional and Technical Services</u>				
	310 Official / Administrative Services				764.00
Total Purchased Professional and Technical Services					\$764.00
500	<u>Other Purchased Services</u>				
	530 Communications				1,479.61
	549 Other Advertising/Public Relations				1,188.95
Total Other Purchased Services					\$2,668.56
600	<u>Supplies</u>				
	610 General Supplies				112.11
Total Supplies					\$112.11
800	<u>Other Objects</u>				
	810 Dues and Fees				3,561.80
	820 Claims and Judgments Against the LEA				25,540.89
	890 Miscellaneous Expenditures				243.75
Total Other Objects					\$29,346.44
Total 2310 Board Services					\$36,319.91

General Fund (10)

2320 Board Treasurer Services

Elementary

Secondary

Federal

Total

500 Other Purchased Services

520 Insurance - General

123.75

Total Other Purchased Services

\$123.75

Total 2320 Board Treasurer Services

\$123.75

General Fund (10)

	<u>Elementary</u>	<u>Secondary</u>	<u>Federal</u>	<u>Total</u>
2330 Tax Assessment and Collection Services				
100 Personnel Services – Salaries				
100 Personnel Services – Salaries				53,537.01
Total Personnel Services – Salaries				\$53,537.01
200 Personnel Services – Employee Benefits				
220 Social Security Contributions				4,072.74
260 Workers’ Compensation				294.01
Total Personnel Services – Employee Benefits				\$4,366.75
300 Purchased Professional and Technical Services				
310 Official / Administrative Services				12,464.52
Total Purchased Professional and Technical Services				\$12,464.52
500 Other Purchased Services				
530 Communications				3,363.82
Total Other Purchased Services				\$3,363.82
600 Supplies				
610 General Supplies				2,844.54
Total Supplies				\$2,844.54
800 Other Objects				
810 Dues and Fees				399.75
Total Other Objects				\$399.75
Total 2330 Tax Assessment and Collection Services				\$76,976.39

General Fund (10)

2350 Legal and Accounting Services

Elementary

Secondary

Federal

Total

300 Purchased Professional and Technical Services

330 Other Professional Services

34,647.04

Total Purchased Professional and Technical Services

\$34,647.04

Total 2350 Legal and Accounting Services

\$34,647.04

General Fund (10)

2360 Office of the Superintendent / Executive Director Services

	<u>Elementary</u>	<u>Secondary</u>	<u>Federal</u>	<u>Total</u>
100 Personnel Services – Salaries				
100 Personnel Services – Salaries				140,958.50
Total Personnel Services – Salaries				\$140,958.50
200 Personnel Services – Employee Benefits				
210 Group Insurance – Contracted Provider				38,901.48
220 Social Security Contributions				10,529.30
230 PSERS Retirement Contributions				33,360.21
260 Workers' Compensation				774.12
Total Personnel Services – Employee Benefits				\$83,565.11
300 Purchased Professional and Technical Services				
310 Official / Administrative Services				396.99
Total Purchased Professional and Technical Services				\$396.99
500 Other Purchased Services				
520 Insurance – General				123.75
530 Communications	978.16	978.17		1,956.33
580 Travel				2,559.49
Total Other Purchased Services	\$978.16	\$978.17		\$4,639.57
600 Supplies				
610 General Supplies				983.98
640 Books and Periodicals				156.00
Total Supplies				\$1,139.98
700 Property				
750 Equipment – Original and Additional				3,819.34
Total Property				\$3,819.34
800 Other Objects				
810 Dues and Fees				3,573.00
840 Contingency				1,036.43
Total Other Objects				\$4,609.43
Total 2360 Office of the Superintendent / Executive Director Services	\$978.16	\$978.17		\$239,128.92

General Fund (10)

2380 Office of the Principal Services

100 Personnel Services – Salaries

	<u>Elementary</u>	<u>Secondary</u>	<u>Federal</u>	<u>Total</u>
100 Personnel Services – Salaries	135,097.03	142,899.84		277,996.87
Total Personnel Services – Salaries	\$135,097.03	\$142,899.84		\$277,996.87

200 Personnel Services – Employee Benefits

210 Group Insurance – Contracted Provider	50,756.62	48,951.42		99,708.04
220 Social Security Contributions	10,100.40	10,700.00		20,800.40
230 PSERS Retirement Contributions	32,215.07	33,412.63		65,627.70
260 Workers' Compensation	1,526.71			1,526.71
Total Personnel Services – Employee Benefits	\$94,598.80	\$93,064.05		\$187,662.85

500 Other Purchased Services

520 Insurance – General		123.75		123.75
530 Communications	4,016.55	6,304.94		10,321.49
580 Travel	1,099.17			1,099.17
Total Other Purchased Services	\$5,115.72	\$6,428.69		\$11,544.41

600 Supplies

610 General Supplies	24,688.87	24,854.98		49,543.85
630 Food	1,173.50	113.10		1,286.60
640 Books and Periodicals	1,191.95	182.49		1,374.44
Total Supplies	\$27,054.32	\$25,150.57		\$52,204.89

700 Property

750 Equipment – Original and Additional	5,390.02	6,901.08		12,291.10
760 Equipment – Replacement		41.96		41.96
Total Property	\$5,390.02	\$6,943.04		\$12,333.06

800 Other Objects

810 Dues and Fees	1,524.00	1,677.95		3,201.95
840 Contingency	1,528.97	770.75		2,299.72
890 Miscellaneous Expenditures	1,866.09	1,219.52		3,085.61
Total Other Objects	\$4,919.06	\$3,668.22		\$8,587.28

Total 2380 Office of the Principal Services

	\$272,174.95	\$278,154.41		\$550,329.36
--	---------------------	---------------------	--	---------------------

General Fund (10)

	<u>Elementary</u>	<u>Secondary</u>	<u>Federal</u>	<u>Total</u>
2400 Support Services – Pupil Health				
100 Personnel Services – Salaries				
100 Personnel Services – Salaries				78,152.52
Total Personnel Services – Salaries				\$78,152.52
200 Personnel Services – Employee Benefits				
210 Group Insurance – Contracted Provider				668.88
220 Social Security Contributions				5,851.44
230 PSERS Retirement Contributions				17,660.23
260 Workers' Compensation				429.20
Total Personnel Services – Employee Benefits				\$24,609.75
300 Purchased Professional and Technical Services				
310 Official / Administrative Services				395.00
330 Other Professional Services				76,705.32
Total Purchased Professional and Technical Services				\$77,100.32
400 Purchased Property Services				
430 Repairs and Maintenance Services				177.01
Total Purchased Property Services				\$177.01
500 Other Purchased Services				
530 Communications				1,168.62
580 Travel				8.42
Total Other Purchased Services				\$1,177.04
600 Supplies				
610 General Supplies				2,827.87
Total Supplies				\$2,827.87
Total 2400 Support Services – Pupil Health				\$184,044.51

General Fund (10)

2420 Medical Services

Elementary

Secondary

Federal

Total

300 Purchased Professional and Technical Services

330 Other Professional Services

75,505.32

Total Purchased Professional and Technical Services

\$75,505.32

400 Purchased Property Services

430 Repairs and Maintenance Services

177.01

Total Purchased Property Services

\$177.01

600 Supplies

610 General Supplies

494.85

Total Supplies

\$494.85

Total 2420 Medical Services

\$76,177.18

General Fund (10)

2430 Dental Services

Elementary

Secondary

Federal

Total

300 Purchased Professional and Technical Services

330 Other Professional Services

1,200.00

Total Purchased Professional and Technical Services

\$1,200.00

Total 2430 Dental Services

\$1,200.00

General Fund (10)

2440 Nursing Services

Elementary Secondary Federal Total

100 Personnel Services – Salaries				
100 Personnel Services – Salaries				78,152.52
Total Personnel Services – Salaries				\$78,152.52
200 Personnel Services – Employee Benefits				
210 Group Insurance – Contracted Provider				668.88
220 Social Security Contributions				5,851.44
230 PSERS Retirement Contributions				17,660.23
260 Workers' Compensation				429.20
Total Personnel Services – Employee Benefits				\$24,609.75
300 Purchased Professional and Technical Services				
310 Official / Administrative Services				395.00
Total Purchased Professional and Technical Services				\$395.00
500 Other Purchased Services				
530 Communications				1,168.62
580 Travel				8.42
Total Other Purchased Services				\$1,177.04
600 Supplies				
610 General Supplies				2,333.02
Total Supplies				\$2,333.02
Total 2440 Nursing Services				\$106,667.33

General Fund (10)

2500 Support Services – Business

Elementary Secondary Federal Total

100 Personnel Services – Salaries

100 Personnel Services – Salaries 134,958.50

Total Personnel Services – Salaries \$134,958.50

200 Personnel Services – Employee Benefits

210 Group Insurance – Contracted Provider 66,874.69

220 Social Security Contributions 10,077.13

230 PSERS Retirement Contributions 32,182.05

260 Workers' Compensation 741.17

Total Personnel Services – Employee Benefits \$109,875.04

500 Other Purchased Services

520 Insurance – General 247.50

530 Communications 2,459.57

580 Travel 977.35

Total Other Purchased Services \$3,684.42

600 Supplies

610 General Supplies 12,727.90

Total Supplies \$12,727.90

700 Property

750 Equipment – Original and Additional 1,513.08

Total Property \$1,513.08

800 Other Objects

810 Dues and Fees 406.00

Total Other Objects \$406.00

Total 2500 Support Services – Business \$263,164.94

General Fund (10)

2510 Fiscal Services

Elementary

Secondary

Federal

Total

100 Personnel Services – Salaries

100 Personnel Services – Salaries

101,623.00

Total Personnel Services – Salaries

\$101,623.00

200 Personnel Services – Employee Benefits

210 Group Insurance – Contracted Provider

38,803.62

220 Social Security Contributions

7,604.81

230 PSERS Retirement Contributions

24,232.85

260 Workers' Compensation

558.10

Total Personnel Services – Employee Benefits

\$71,199.38

500 Other Purchased Services

520 Insurance – General

247.50

530 Communications

2,459.57

580 Travel

977.35

Total Other Purchased Services

\$3,684.42

600 Supplies

610 General Supplies

5,633.38

Total Supplies

\$5,633.38

700 Property

750 Equipment – Original and Additional

1,513.08

Total Property

\$1,513.08

800 Other Objects

810 Dues and Fees

406.00

Total Other Objects

\$406.00

Total 2510 Fiscal Services

\$184,059.26

General Fund (10)

2511 Supervision of Fiscal Services - Head of Component

	<u>Elementary</u>	<u>Secondary</u>	<u>Federal</u>	<u>Total</u>
100 Personnel Services – Salaries				
100 Personnel Services – Salaries				68,823.00
Total Personnel Services – Salaries				\$68,823.00
200 Personnel Services – Employee Benefits				
210 Group Insurance – Contracted Provider				17,696.67
220 Social Security Contributions				5,155.12
230 PSERS Retirement Contributions				16,411.48
260 Workers' Compensation				377.97
Total Personnel Services – Employee Benefits				\$39,641.24
500 Other Purchased Services				
520 Insurance – General				247.50
530 Communications				2,459.57
580 Travel				977.35
Total Other Purchased Services				\$3,684.42
600 Supplies				
610 General Supplies				133.38
Total Supplies				\$133.38
700 Property				
750 Equipment – Original and Additional				1,513.08
Total Property				\$1,513.08
800 Other Objects				
810 Dues and Fees				406.00
Total Other Objects				\$406.00
Total 2511 Supervision of Fiscal Services - Head of Component				\$114,201.12

General Fund (10)

2514 Payroll Services

Elementary

Secondary

Federal

Total

100 Personnel Services – Salaries

100 Personnel Services – Salaries

32,800.00

Total Personnel Services – Salaries

\$32,800.00

200 Personnel Services – Employee Benefits

210 Group Insurance – Contracted Provider

20,591.64

220 Social Security Contributions

2,449.69

230 PSERS Retirement Contributions

7,821.37

260 Workers' Compensation

180.13

Total Personnel Services – Employee Benefits

\$31,042.83

600 Supplies

610 General Supplies

5,500.00

Total Supplies

\$5,500.00

Total 2514 Payroll Services

\$69,342.83

General Fund (10)

2515 Financial Accounting Services

Elementary

Secondary

Federal

Total

200 Personnel Services – Employee Benefits

210 Group Insurance – Contracted Provider

515.31

Total Personnel Services – Employee Benefits

\$515.31

Total 2515 Financial Accounting Services

\$515.31

General Fund (10)

2520 Purchasing Services

Elementary

Secondary

Federal

Total

100 Personnel Services – Salaries

100 Personnel Services – Salaries

33,335.50

Total Personnel Services – Salaries

\$33,335.50

200 Personnel Services – Employee Benefits

210 Group Insurance – Contracted Provider

28,071.07

220 Social Security Contributions

2,472.32

230 PSERS Retirement Contributions

7,949.20

260 Workers' Compensation

183.07

Total Personnel Services – Employee Benefits

\$38,675.66

600 Supplies

610 General Supplies

7,094.52

Total Supplies

\$7,094.52

Total 2520 Purchasing Services

\$79,105.68

General Fund (10)

2600 Operation and Maintenance of Plant Services

Elementary

Secondary

Federal

Total

100 Personnel Services – Salaries

100 Personnel Services – Salaries 424,943.66

Total Personnel Services – Salaries \$424,943.66

200 Personnel Services – Employee Benefits

210 Group Insurance – Contracted Provider 184,146.86

220 Social Security Contributions 31,843.04

230 PSERS Retirement Contributions 100,626.57

250 Unemployment Compensation 612.19

260 Workers' Compensation 2,333.74

Total Personnel Services – Employee Benefits \$319,562.40

300 Purchased Professional and Technical Services

310 Official / Administrative Services 63,450.21

350 Security / Safety Services 325.85

Total Purchased Professional and Technical Services \$63,776.06

400 Purchased Property Services

410 Cleaning Services 30,927.53

420 Utility Services 250,179.77

430 Repairs and Maintenance Services 104,799.10

440 Rentals 1,449.35

Total Purchased Property Services \$387,355.75

500 Other Purchased Services

523 General Property and Liability Insurance 64,886.00

530 Communications 1,091.38

Total Other Purchased Services \$65,977.38

600 Supplies

610 General Supplies 25,110.81 32,060.32 57,171.13

620 Energy 62,916.06

Total Supplies \$25,110.81 \$32,060.32 \$120,087.19

700 Property

750 Equipment – Original and Additional 16,603.72

760 Equipment – Replacement 9,022.62

Total Property \$25,626.34

800 Other Objects

810 Dues and Fees 966.00

Total Other Objects \$966.00

Total 2600 Operation and Maintenance of Plant Services \$25,110.81 \$32,060.32 \$1,408,294.78

General Fund (10)

	<u>Elementary</u>	<u>Secondary</u>	<u>Federal</u>	<u>Total</u>
2610 Supervision of Operation and Maintenance of Plant Services				
100 Personnel Services – Salaries				
100 Personnel Services – Salaries				47,104.00
Total Personnel Services – Salaries				\$47,104.00
200 Personnel Services – Employee Benefits				
210 Group Insurance – Contracted Provider				17,541.86
220 Social Security Contributions				3,501.18
230 PSERS Retirement Contributions				11,232.30
260 Workers' Compensation				258.69
Total Personnel Services – Employee Benefits				\$32,534.03
800 Other Objects				
810 Dues and Fees				127.00
Total Other Objects				\$127.00
Total 2610 Supervision of Operation and Maintenance of Plant Services				\$79,765.03

General Fund (10)

	<u>Elementary</u>	<u>Secondary</u>	<u>Federal</u>	<u>Total</u>
2611 Supervision of Operation and Maintenance of Plant Services – Head of Component				
100 Personnel Services – Salaries				
100 Personnel Services – Salaries				47,104.00
Total Personnel Services – Salaries				\$47,104.00
200 Personnel Services – Employee Benefits				
210 Group Insurance – Contracted Provider				17,541.86
220 Social Security Contributions				3,501.18
230 PSERS Retirement Contributions				11,232.30
260 Workers' Compensation				258.69
Total Personnel Services – Employee Benefits				\$32,534.03
800 Other Objects				
810 Dues and Fees				127.00
Total Other Objects				\$127.00
Total 2611 Supervision of Operation and Maintenance of Plant Services – Head of Component				\$79,765.03

General Fund (10)

2620 Operation of Buildings Services

100 Personnel Services – Salaries

100 Personnel Services – Salaries				341,451.40
-----------------------------------	--	--	--	------------

Total Personnel Services – Salaries				\$341,451.40
--	--	--	--	---------------------

200 Personnel Services – Employee Benefits

210 Group Insurance – Contracted Provider				146,459.18
---	--	--	--	------------

220 Social Security Contributions				25,610.17
-----------------------------------	--	--	--	-----------

230 PSERS Retirement Contributions				80,776.86
------------------------------------	--	--	--	-----------

250 Unemployment Compensation				612.19
-------------------------------	--	--	--	--------

260 Workers' Compensation				1,875.21
---------------------------	--	--	--	----------

Total Personnel Services – Employee Benefits				\$255,333.61
---	--	--	--	---------------------

300 Purchased Professional and Technical Services

310 Official / Administrative Services				56,869.63
--	--	--	--	-----------

350 Security / Safety Services				325.85
--------------------------------	--	--	--	--------

Total Purchased Professional and Technical Services				\$57,195.48
--	--	--	--	--------------------

400 Purchased Property Services

410 Cleaning Services				30,927.53
-----------------------	--	--	--	-----------

420 Utility Services				250,179.77
----------------------	--	--	--	------------

430 Repairs and Maintenance Services				100,617.23
--------------------------------------	--	--	--	------------

440 Rentals				1,449.35
-------------	--	--	--	----------

Total Purchased Property Services				\$383,173.88
--	--	--	--	---------------------

500 Other Purchased Services

523 General Property and Liability Insurance				64,886.00
--	--	--	--	-----------

530 Communications				1,091.38
--------------------	--	--	--	----------

Total Other Purchased Services				\$65,977.38
---------------------------------------	--	--	--	--------------------

600 Supplies

610 General Supplies	21,644.07		28,593.57	50,237.64
----------------------	-----------	--	-----------	-----------

620 Energy				61,631.49
------------	--	--	--	-----------

Total Supplies				\$111,869.13
-----------------------	--	--	--	---------------------

700 Property

750 Equipment – Original and Additional				10,599.14
---	--	--	--	-----------

760 Equipment – Replacement				9,022.62
-----------------------------	--	--	--	----------

Total Property				\$19,621.76
-----------------------	--	--	--	--------------------

800 Other Objects

810 Dues and Fees				839.00
-------------------	--	--	--	--------

Total Other Objects				\$839.00
----------------------------	--	--	--	-----------------

Total 2620 Operation of Buildings Services				\$1,235,461.64
---	--	--	--	-----------------------

General Fund (10)

2630 Care and Upkeep of Grounds Services	<u>Elementary</u>	<u>Secondary</u>	<u>Federal</u>	<u>Total</u>
100 Personnel Services – Salaries				
100 Personnel Services – Salaries				36,388.26
Total Personnel Services – Salaries				\$36,388.26
200 Personnel Services – Employee Benefits				
210 Group Insurance – Contracted Provider				20,145.82
220 Social Security Contributions				2,731.69
230 PSERS Retirement Contributions				8,617.41
260 Workers' Compensation				199.84
Total Personnel Services – Employee Benefits				\$31,694.76
300 Purchased Professional and Technical Services				
310 Official / Administrative Services				6,580.58
Total Purchased Professional and Technical Services				\$6,580.58
600 Supplies				
620 Energy				684.44
Total Supplies				\$684.44
700 Property				
750 Equipment – Original and Additional				800.08
Total Property				\$800.08
Total 2630 Care and Upkeep of Grounds Services				\$76,148.12

General Fund (10)

	<u>Elementary</u>	<u>Secondary</u>	<u>Federal</u>	<u>Total</u>
2640 Care and Upkeep of Equipment Services				
400 Purchased Property Services				
430 Repairs and Maintenance Services				2,290.55
Total Purchased Property Services				\$2,290.55
600 Supplies				
610 General Supplies	877.12	877.13		1,754.25
620 Energy				600.13
Total Supplies	\$877.12	\$877.13		\$2,354.38
Total 2640 Care and Upkeep of Equipment Services	\$877.12	\$877.13		\$4,644.93

LEA : 110179003 West Branch Area SD

Printed 10/31/2016 3:31:19 PM

General Fund (10)

	<u>Elementary</u>	<u>Secondary</u>	<u>Federal</u>	<u>Total</u>
2650 Vehicle Operation and Maintenance Services (Other Than Student Transportation Vehicles)				
400 <u>Purchased Property Services</u>				
430 Repairs and Maintenance Services				1,891.32
Total Purchased Property Services				\$1,891.32
Total 2650 Vehicle Operation and Maintenance Services (Other Than Student Transportation Vehicles)				\$1,891.32

General Fund (10)

2660 Safety and Security Services

	<u>Elementary</u>	<u>Secondary</u>	<u>Federal</u>	<u>Total</u>
600 Supplies				
610 General Supplies	2,589.62	2,589.62		5,179.24
Total Supplies	\$2,589.62	\$2,589.62		\$5,179.24
700 Property				
750 Equipment – Original and Additional				5,204.50
Total Property				\$5,204.50
Total 2660 Safety and Security Services	\$2,589.62	\$2,589.62		\$10,383.74

General Fund (10)

	<u>Elementary</u>	<u>Secondary</u>	<u>Federal</u>	<u>Total</u>
2700 Student Transportation Services				
400 <u>Purchased Property Services</u>				
430 Repairs and Maintenance Services				203.00
Total Purchased Property Services				\$203.00
500 <u>Other Purchased Services</u>				
513 Contracted Carriers				848,593.50
516 Student Transportation Services From the IU				7,999.64
Total Other Purchased Services				\$856,593.14
600 <u>Supplies</u>				
610 General Supplies				2,800.00
Total Supplies				\$2,800.00
Total 2700 Student Transportation Services				\$859,596.14

General Fund (10)

2710 Supervision of Student Transportation Services

Elementary

Secondary

Federal

Total

600 Supplies

610 General Supplies

2,800.00

Total Supplies

\$2,800.00

Total 2710 Supervision of Student Transportation Services

\$2,800.00

General Fund (10)

2711 Supervision of Student Transportation Services – Head of Component

Elementary

Secondary

Federal

Total

600 Supplies

610 General Supplies

2,800.00

Total Supplies

\$2,800.00

Total 2711 Supervision of Student Transportation Services – Head of Component

\$2,800.00

General Fund (10)

2720 Vehicle Operation Services

Elementary

Secondary

Federal

Total

500 Other Purchased Services

513 Contracted Carriers

771,767.20

Total Other Purchased Services

\$771,767.20

Total 2720 Vehicle Operation Services

\$771,767.20

LEA : 110179003 West Branch Area SD

Printed 10/31/2016 3:31:19 PM

General Fund (10)

2740 Vehicle Servicing and Maintenance Services

Elementary

Secondary

Federal

Total

400 Purchased Property Services

430 Repairs and Maintenance Services

203.00

Total Purchased Property Services

\$203.00

Total 2740 Vehicle Servicing and Maintenance Services

\$203.00

LEA : 110179003 West Branch Area SD

Printed 10/31/2016 3:31:19 PM

General Fund (10)

2750 Nonpublic Transportation

Elementary

Secondary

Federal

Total

500 Other Purchased Services

513 Contracted Carriers

76,826.30

516 Student Transportation Services From the IU

7,999.64

Total Other Purchased Services

\$84,825.94

Total 2750 Nonpublic Transportation

\$84,825.94

General Fund (10)

2800 Support Services – Central

Elementary

Secondary

Federal

Total

300 Purchased Professional and Technical Services

310 Official / Administrative Services

75.00

Total Purchased Professional and Technical Services

\$75.00

500 Other Purchased Services

549 Other Advertising/Public Relations

997.00

Total Other Purchased Services

\$997.00

Total 2800 Support Services – Central

\$1,072.00

General Fund (10)

2830 Staff Services

Elementary

Secondary

Federal

Total

300 Purchased Professional and Technical Services

310 Official / Administrative Services

75.00

Total Purchased Professional and Technical Services

\$75.00

500 Other Purchased Services

549 Other Advertising/Public Relations

997.00

Total Other Purchased Services

\$997.00

Total 2830 Staff Services

\$1,072.00

LEA : 110179003 West Branch Area SD

Printed 10/31/2016 3:31:19 PM

General Fund (10)

2832 Recruitment and Placement Services

Elementary

Secondary

Federal

Total

500 Other Purchased Services

549 Other Advertising/Public Relations

997.00

Total Other Purchased Services

\$997.00

Total 2832 Recruitment and Placement Services

\$997.00

General Fund (10)

	<u>Elementary</u>	<u>Secondary</u>	<u>Federal</u>	<u>Total</u>
2836 Staff Development Services – Non-Instructional, Non-Certified Staff Only				
300 <u>Purchased Professional and Technical Services</u>				
310 Official / Administrative Services				75.00
Total Purchased Professional and Technical Services				\$75.00
Total 2836 Staff Development Services – Non-Instructional, Non-Certified Staff Only				\$75.00

General Fund (10)

3000 Operation of Non-Instructional Services

Total

100 Personnel Services – Salaries

100 Personnel Services – Salaries 189,459.62

Total Personnel Services – Salaries \$189,459.62

200 Personnel Services – Employee Benefits

210 Group Insurance – Contracted Provider 9,602.37

220 Social Security Contributions 14,372.90

230 PSERS Retirement Contributions 36,226.45

250 Unemployment Compensation 50.55

260 Workers' Compensation 1,040.51

Total Personnel Services – Employee Benefits \$61,292.78

300 Purchased Professional and Technical Services

310 Official / Administrative Services 36,318.56

350 Security / Safety Services 500.00

390 Other Purchased Professional and Technical Services 15,285.00

Total Purchased Professional and Technical Services \$52,103.56

400 Purchased Property Services

410 Cleaning Services 920.00

420 Utility Services 3,897.17

430 Repairs and Maintenance Services 6,441.53

Total Purchased Property Services \$11,258.70

500 Other Purchased Services

510 Student Transportation Services 36,181.85

530 Communications 2,323.37

580 Travel 12,533.87

Total Other Purchased Services \$51,039.09

600 Supplies

610 General Supplies 26,809.51

620 Energy 1,980.65

630 Food 2,637.00

640 Books and Periodicals 1,421.50

Total Supplies \$32,848.66

700 Property

750 Equipment – Original and Additional 42,294.88

760 Equipment – Replacement 1,196.62

Total Property \$43,491.50

800 Other Objects

810 Dues and Fees 12,694.00

Total Other Objects \$12,694.00

Total 3000 Operation of Non-Instructional Services \$454,187.91

General Fund (10)

3200 Student Activities

Elementary

Secondary

Federal

Total

100 Personnel Services – Salaries

100 Personnel Services – Salaries

189,459.62

Total Personnel Services – Salaries

\$189,459.62

200 Personnel Services – Employee Benefits

210 Group Insurance – Contracted Provider

9,602.37

220 Social Security Contributions

14,372.90

230 PSERS Retirement Contributions

36,226.45

250 Unemployment Compensation

50.55

260 Workers' Compensation

1,040.51

Total Personnel Services – Employee Benefits

\$61,292.78

300 Purchased Professional and Technical Services

310 Official / Administrative Services

36,318.56

350 Security / Safety Services

500.00

390 Other Purchased Professional and Technical Services

15,285.00

Total Purchased Professional and Technical Services

\$52,103.56

400 Purchased Property Services

410 Cleaning Services

920.00

420 Utility Services

3,897.17

430 Repairs and Maintenance Services

6,441.53

Total Purchased Property Services

\$11,258.70

500 Other Purchased Services

510 Student Transportation Services

36,181.85

530 Communications

2,323.37

580 Travel

12,533.87

Total Other Purchased Services

\$51,039.09

600 Supplies

610 General Supplies

26,809.51

620 Energy

1,980.65

630 Food

2,637.00

640 Books and Periodicals

1,421.50

Total Supplies

\$32,848.66

700 Property

750 Equipment – Original and Additional

42,294.88

760 Equipment – Replacement

1,196.62

Total Property

\$43,491.50

800 Other Objects

810 Dues and Fees

12,694.00

Total Other Objects

\$12,694.00

Total 3200 Student Activities

\$454,187.91

General Fund (10)

4000 Facilities Acquisition, Construction and Improvement Services

Total

300 Purchased Professional and Technical Services

310 Official / Administrative Services

6,172.85

Total Purchased Professional and Technical Services

\$6,172.85

400 Purchased Property Services

450 Construction Services

1,467,268.45

Total Purchased Property Services

\$1,467,268.45

Total 4000 Facilities Acquisition, Construction and Improvement Services

\$1,473,441.30

General Fund (10)

	<u>Elementary</u>	<u>Secondary</u>	<u>Federal</u>	<u>Total</u>
4200 Existing Site Improvement Services				
300 <u>Purchased Professional and Technical Services</u>				
310 Official / Administrative Services				6,172.85
Total Purchased Professional and Technical Services				\$6,172.85
Total 4200 Existing Site Improvement Services				\$6,172.85

General Fund (10)

	<u>Elementary</u>	<u>Secondary</u>	<u>Federal</u>	<u>Total</u>
4500 Building Acquisition and Construction Services – Original and Additional				
400 <u>Purchased Property Services</u>				
450 Construction Services				1,467,268.45
Total Purchased Property Services				\$1,467,268.45
Total 4500 Building Acquisition and Construction Services – Original and Additional				\$1,467,268.45

General Fund (10)

5000 Other Expenditures and Financing Uses

Total

800 Other Objects

830 Interest

427,915.03

Total Other Objects

\$427,915.03

900 Other Uses of Funds

910 Redemption of Principal

9,150,841.83

Total Other Uses of Funds

\$9,150,841.83

Total 5000 Other Expenditures and Financing Uses

\$9,578,756.86

General Fund (10)

	<u>Elementary</u>	<u>Secondary</u>	<u>Federal</u>	<u>Total</u>
5100 Debt Service / Other Expenditures and Financing Uses				
800 Other Objects				
830 Interest				427,915.03
Total Other Objects				\$427,915.03
900 Other Uses of Funds				
910 Redemption of Principal				9,150,841.83
Total Other Uses of Funds				\$9,150,841.83
Total 5100 Debt Service / Other Expenditures and Financing Uses				\$9,578,756.86

General Fund (10)

	<u>Elementary</u>	<u>Secondary</u>	<u>Federal</u>	<u>Total</u>
5110 Debt Service				
800 Other Objects				
830 Interest				427,915.03
Total Other Objects				\$427,915.03
900 Other Uses of Funds				
910 Redemption of Principal				690,841.83
Total Other Uses of Funds				\$690,841.83
Total 5110 Debt Service				\$1,118,756.86

LEA : 110179003 West Branch Area SD

Printed 10/31/2016 3:31:28 PM

General Fund (10)

	<u>Elementary</u>	<u>Secondary</u>	<u>Federal</u>	<u>Total</u>
5120 Debt Service – Refunded Bonds				
900 Other Uses of Funds				
910 Redemption of Principal				8,460,000.00
Total Other Uses of Funds				\$8,460,000.00
Total 5120 Debt Service – Refunded Bonds				\$8,460,000.00

	<u>General Fund(10)</u>	<u>Public Purpose Trust(27)</u>	<u>Other Compt Approved (28)</u>	<u>Athletic / Activity(29)</u>	<u>Capital Reserve (690. 1850)(31)</u>
1000 Instruction					
1100 Regular Programs - Elementary / Secondary	6,585,246.48				
1200 Special Programs - Elementary / Secondary	2,140,318.01				
1300 Vocational Education	727,252.41				
1400 Other Instructional Programs - Elementary / Secondary	143,706.64				
1800 Pre-Kindergarten	98,998.57				
Total Instruction	\$9,695,522.11				
2000 Support Services					
2100 Support Services - Students	471,688.04				
2200 Support Services - Instructional Staff	654,795.72				
2300 Support Services - Administration	937,525.37				
2400 Support Services - Pupil Health	184,044.51				
2500 Support Services - Business	263,164.94				
2600 Operation and Maintenance of Plant Services	1,408,294.78				
2700 Student Transportation Services	859,596.14				
2800 Support Services - Central	1,072.00				
Total Support Services	\$4,780,181.50				
3000 Operation of Non-Instructional Services					
3200 Student Activities	454,187.91				
Total Operation of Non-Instructional Services	\$454,187.91				
4000 Facilities Acquisition, Construction and Improvement Services					
4200 Existing Site Improvement Services	6,172.85				
4500 Building Acquisition and Construction Services - Original and Additional	1,467,268.45				
Total Facilities Acquisition, Construction and Improvement Services	\$1,473,441.30				
5000 Other Expenditures and Financing Uses					
5100 Debt Service / Other Expenditures and Financing Uses	9,578,756.86				
Total Other Expenditures and Financing Uses	\$9,578,756.86				
TOTAL ACTUAL EXPENDITURES & OTHER FINANCING USES	\$25,982,089.68				

	<u>Capital Reserve (1431)(32)</u>	<u>Other Capital Projects Fund(39)</u>	<u>Debt Service(40)</u>	<u>Permanent(90)</u>	<u>Total</u>
1000 Instruction					
1100 Regular Programs - Elementary / Secondary					6,585,246.48
1200 Special Programs - Elementary / Secondary					2,140,318.01
1300 Vocational Education					727,252.41
1400 Other Instructional Programs - Elementary / Secondary					143,706.64
1800 Pre-Kindergarten					98,998.57
Total Instruction					\$9,695,522.11
2000 Support Services					
2100 Support Services - Students					471,688.04
2200 Support Services - Instructional Staff					654,795.72
2300 Support Services - Administration					937,525.37
2400 Support Services - Pupil Health					184,044.51
2500 Support Services - Business					263,164.94
2600 Operation and Maintenance of Plant Services					1,408,294.78
2700 Student Transportation Services					859,596.14
2800 Support Services - Central					1,072.00
Total Support Services					\$4,780,181.50
3000 Operation of Non-Instructional Services					
3200 Student Activities					454,187.91
Total Operation of Non-Instructional Services					\$454,187.91
4000 Facilities Acquisition, Construction and Improvement Services					
4200 Existing Site Improvement Services					6,172.85
4500 Building Acquisition and Construction Services - Original and Additional					1,467,268.45
Total Facilities Acquisition, Construction and Improvement Services					\$1,473,441.30
5000 Other Expenditures and Financing Uses					
5100 Debt Service / Other Expenditures and Financing Uses					9,578,756.86
Total Other Expenditures and Financing Uses					\$9,578,756.86
TOTAL ACTUAL EXPENDITURES & OTHER FINANCING USES					\$25,982,089.68

LEA : 110179003 West Branch Area SD

Printed 10/31/2016 3:31:59 PM

PSERS Salary Data (Salary Data should relate to the General Fund only)

Amount Description	Amount
Total Salary Base for salaries subject to PSERS withholding	6,410,235.93
Total Federally Funded salaries subject to PSERS withholding	3,678,226.80
	<hr/>

Title I Expenditure Data

Amount Description	Amount
Expenditures Funded with Current Title I Funds	238,096.00
Expenditures Funded with Carry over Title I Funds	
	<hr/>
Total Title I Expenditure Data	\$238,096.00
	<hr/>

Title I ARRA Amount

Amount Description	Amount
Portion of Total Title I Expenditures funded with ARRA Title I	877.00
	<hr/>

Benefits for Staff Relative to Collective Bargaining Agreements

	OBJECT	COVERED	NOT COVERED	TOTAL
10 General Fund	No Self Insurance data to report			
	211 Medical Insurance	1,689,679.14		1,689,679.14
	212 Dental Insurance	110,901.26		110,901.26
	215 Eye Care Insurance			
	216 Prescription Insurance			
	271 Self-Insurance Medical Benefits			
	272 Self-Insurance Dental Benefits			
	275 Self-Insurance Eye Care Benefits			
	276 Self-Insurance Prescription Benefits			
	FUND TOTAL		\$1,800,580.40	
50 Enterprise Fund	No Self Insurance data to report			
	211 Medical Insurance			
	212 Dental Insurance			
	215 Eye Care Insurance			
	216 Prescription Insurance			
	271 Self-Insurance Medical Benefits			
	272 Self-Insurance Dental Benefits			
	275 Self-Insurance Eye Care Benefits			
	276 Self-Insurance Prescription Benefits			
	FUND TOTAL			
60 Internal Service Fund	No Self Insurance data to report			
	211 Medical Insurance			
	212 Dental Insurance			
	215 Eye Care Insurance			
	216 Prescription Insurance			
	271 Self-Insurance Medical Benefits			
	272 Self-Insurance Dental Benefits			
	275 Self-Insurance Eye Care Benefits			
	276 Self-Insurance Prescription Benefits			
	FUND TOTAL			
Total of All Funds		\$1,800,580.40		\$1,800,580.40

LEA : 110179003 West Branch Area SD

Printed 10/31/2016 3:32:01 PM

Function	Special Education (Prior Year)	Nonspecial Education (Prior Year)	Total (Prior Year)	Special Education (Current Year)	Nonspecial Education (Current Year)	Total (Current Year)
2120 Guidance Services	266,370.07	66,592.52	332,962.59	270,337.65	67,584.42	337,922.07
2140 Psychological Services	64,483.32	16,120.83	80,604.15	32,751.06	8,187.76	40,938.82
2150 Speech Pathology and Audiology Services						
2160 Social Work Services						
2260 Instruction and Curriculum Development Services	116,788.72	16,697.18	133,485.90	49,180.14	7,031.24	56,211.38
2350 Legal and Accounting Services	2,832.61	11,330.43	14,163.04	6,929.41	27,717.63	34,647.04
2420 Medical Services	56,997.63		56,997.63	76,177.18		76,177.18
2440 Nursing Services	19,590.65	78,362.62	97,953.27	21,333.46	85,333.87	106,667.33
2700 Student Transportation Services	169,501.48	655,843.26	825,344.74	176,535.71	683,060.43	859,596.14
Total	\$696,564.48	\$844,946.84	\$1,541,511.32	\$633,244.61	\$878,915.35	\$1,512,159.96

(PRINCIPAL AMOUNTS ONLY)

ALL GOVERNMENTAL FUND TYPES

	Short-Term Borrowing	General Obligation Bonds/Notes	Authority Building Obligations	Other Long-Term Debt	Other Post-Employment Benefits (OPEB)	Compensated Absences	Net Pension Liability	Total
1. Debt at Beginning of Fiscal Year		9,530,249.83		740,188.52	1,519,447.00	228,315.00	19,672,000.00	31,690,200.35
2. Additional Debt Incurred During Year	50,000.00	8,665,000.00		1,259,811.48	2,083.00	18,530.00	1,256,000.00	11,251,424.48
3. Retirements and Repayments	50,000.00	8,965,841.83		135,000.00				9,150,841.83
4. Debt at End of Fiscal Year		9,229,408.00		1,865,000.00	1,521,530.00	246,845.00	20,928,000.00	33,790,783.00
5. Accreted Interest at End Of Fiscal Year								
6. Total Debt and Accreted Interest		9,229,408.00		1,865,000.00	1,521,530.00	246,845.00	20,928,000.00	33,790,783.00
7. Current Portion P&I - Due within 1 year		1,923,729.66		191,616.98				2,115,346.64
8. Interest Paid during current fiscal year	256.54	394,636.89		33,021.60				427,915.03

(PRINCIPAL AMOUNTS ONLY)

ALL PROPRIETARY FUND TYPES

- 1. Debt at Beginning of Fiscal Year
- 2. Additional Debt Incurred During Year
- 3. Retirements and Repayments
- 4. Debt at End of Fiscal Year
- 5. Accreted Interest at End Of Fiscal Year
- 6. Total Debt and Accreted Interest
- 7. Current Portion P&I - Due within 1 year
- 8. Interest Paid during current fiscal year

Total Principal and Interest Payments Made by Your School - All Funds

Function	Fund		Principal (910)	Principal (920)	Interest (830)	Total (Principal +Interest)	Misc Other Uses (990)
5110	10	General Fund	690,841.83		427,915.03	1,118,756.86	
5110	20	Special Revenue Funds					
5110	30	Capital Projects Funds					
5110	40	Debt Service Fund					
5110	90	Permanent Fund					
5120	10	General Fund	8,460,000.00			8,460,000.00	
5120	20	Special Revenue Funds					
5120	30	Capital Projects Funds					
5120	40	Debt Service Fund					

Total Debt Payments - Governmental Funds			\$9,150,841.83		\$427,915.03	\$9,578,756.86	
---	--	--	-----------------------	--	---------------------	-----------------------	--

Function	Fund		Principal (910)	Principal (920)	Interest (830)	Total (Principal +Interest)
5110	50	Enterprise Fund				
5110	60	Internal Service Fund				
5120	50	Enterprise Fund				
5120	60	Internal Service Fund				

Total Debt Payments - Proprietary Funds						
--	--	--	--	--	--	--

Bond Details
Governmental Funds

Debt Category	Debt Issue Date (MM/YYYY)	Principal Amounts Only			Debt at End of Fiscal Year	Current Portion Due Within One Year (Principal and Interest)	Interest Paid During Fiscal Year
		Debt at Beginning of Fiscal Year	Additions	Reductions / Repayments			
TAN/TRAN	12/2015		50,000.00	50,000.00			256.54
Net Pension Liability		19,672,000.00	1,256,000.00		20,928,000.00		
General Obligation Bonds/Notes – CIB	05/2007	709,213.27		76,799.51	632,413.76	105,607.75	28,808.24
General Obligation Bonds/Notes – CIB	05/2008	361,036.56		39,042.32	321,994.24	53,846.91	14,804.59
Other Post-Employment Benefits (OPEB)		1,519,447.00	2,083.00		1,521,530.00		
Compensated Absences		228,315.00	18,530.00		246,845.00		
General Obligation Bonds/Notes – CIB	12/2010	8,460,000.00		8,460,000.00		887,400.00	341,215.00
Extended Term Financing Agreements		740,188.52	1,259,811.48	135,000.00	1,865,000.00	191,616.98	33,021.60
General Obligation Bonds/Notes – CIB	03/2016		8,665,000.00	390,000.00	8,275,000.00	876,875.00	9,809.06
Totals for Debt Entered:		\$31,690,200.35	\$11,251,424.48	\$9,150,841.83	\$33,790,783.00	\$2,115,346.64	\$427,915.03

General Fund (10)

Section 1: Tuition/Purchased Services as Reported within Expenditure Detail

	Amount
Tuition Reported in General Fund Expenditures 1000-560	1,198,319.17
Purchased Services in General Fund Expenditures 1000-594 and 1000-597	1,774.31
Section 1 Total	\$1,200,093.48

Section 2: Tuition Paid to Institution Types During Fiscal Year

	Tuition Paid For Nonspecial Education	Tuition Paid For Special Education	Total
1 1306 Institutions	3,943.83		3,943.83
2 Institutionalized Children's Programs		45,848.97	45,848.97
3 Juveniles Incarcerated in Adult Facilities			
4 Residential Treatment Facilities			
5 Other Local Education Agencies			
6 Brick and Mortar Charter Schools			
7 Cyber Charter Schools	410,540.34		410,540.34
8 Career and Technology Centers	578,659.87		578,659.87
9 Approved Private Schools		100,101.07	100,101.07
10 PA Chartered Schools for the Deaf and Blind			
11 Private Residential Rehabilitative Institutions			
12 Juvenile Detention Centers	59,225.09		59,225.09
13 Special Program Jointures			
14 Other Tuition Not Included Elsewhere In This Section	1,774.31		1,774.31
Section 2 Total	\$1,054,143.44	\$145,950.04	\$1,200,093.48